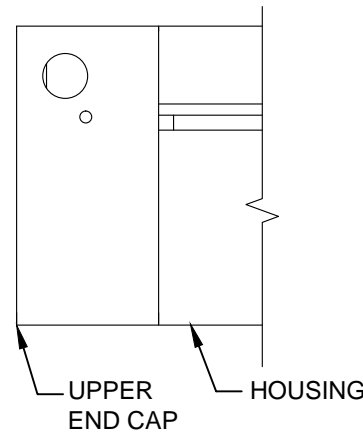
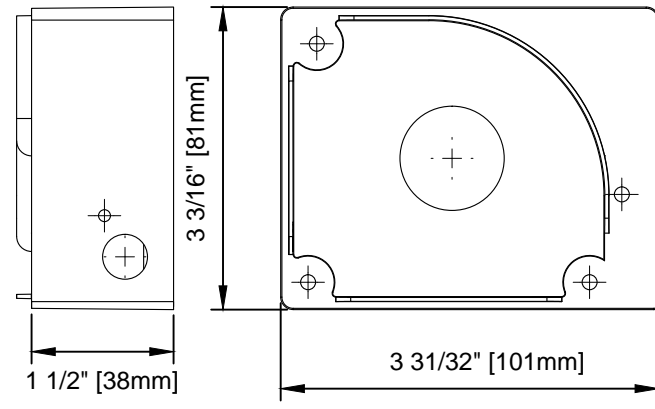


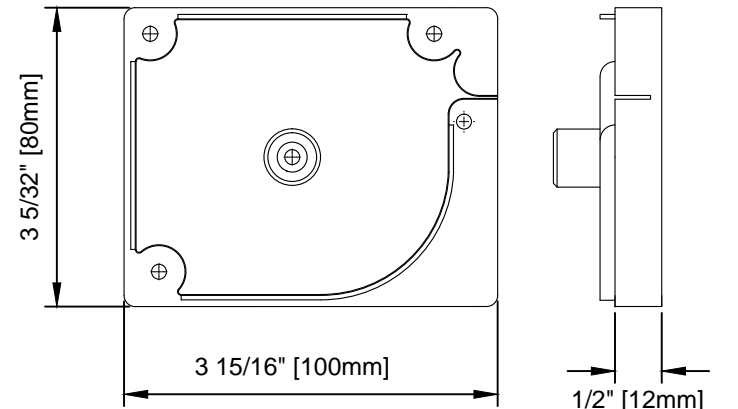
**HOUSING**  
SCALE: 6"=1'0"



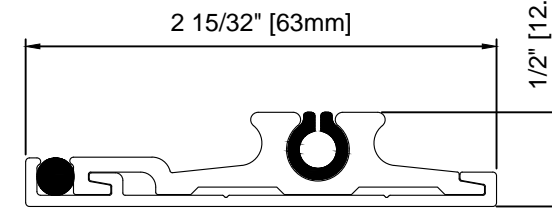
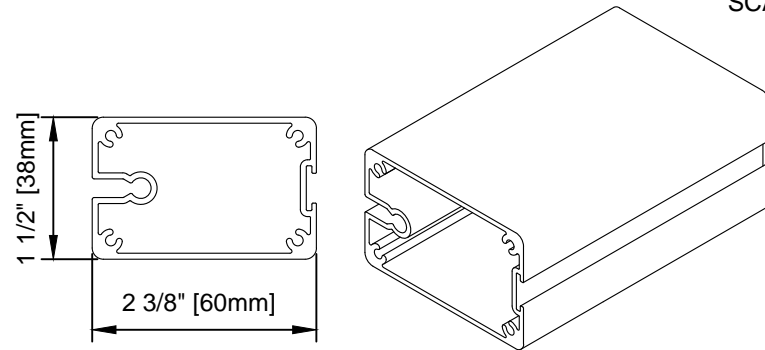
**UPPER END CAP**  
SCALE: 6"=1'0"



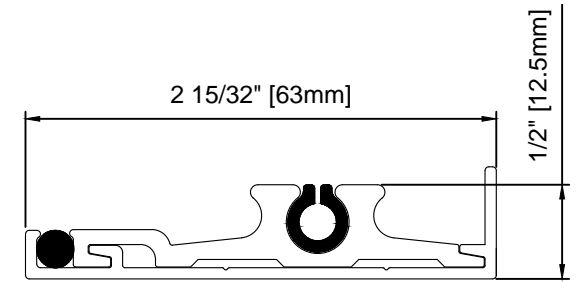
**LOWER END CAP**  
SCALE: 6"=1'0"



**PULL BAR**  
SCALE: 6"=1'0"



TRACK RUNNER



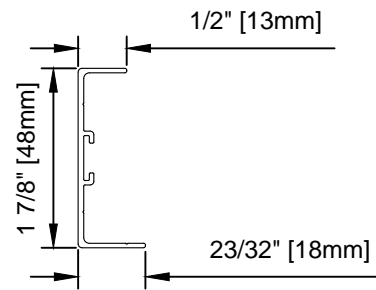
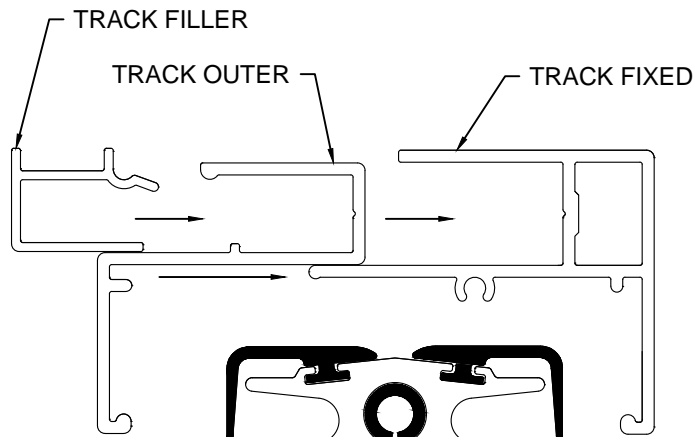
TRACK RETAINER

LOWER TRACK

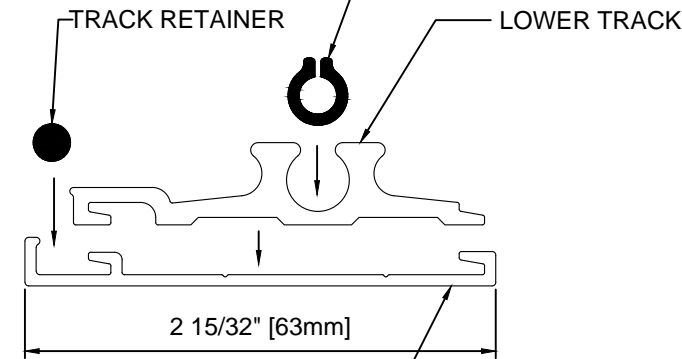
TRACK RUNNER

TRACK RETAINER

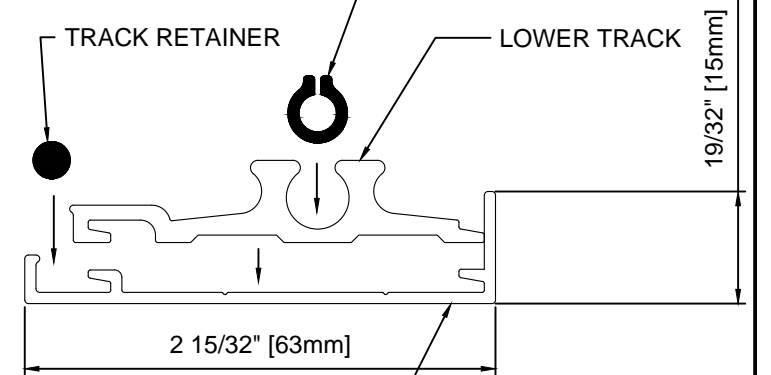
LOWER TRACK



**RECEIVER**  
SCALE: 6"=1'0"

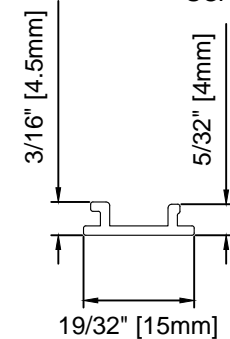


**DETAIL B - LOWER TRACK**  
SCALE: 1'0" = 1'0"

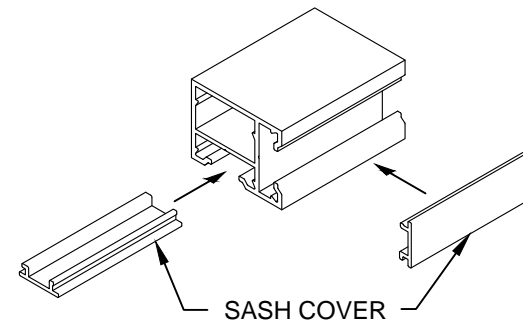


**FACE FIT TRACK MOUNT- OPTIONAL**  
SCALE: 1'0" = 1'0"

**DETAIL A - UPPER TRACK**  
SCALE: 1'0" = 1'0"



**SASH COVER**  
SCALE: 1'0" = 1'0"



**BOX CHANNEL - OPTIONAL**  
SCALE: 6"=1'0"



**WIZARD INDUSTRIES INC.**  
4263 PHILLIPS AVENUE  
BURNABY, BC  
V5A 2X4

**THE HORIZON**  
80mm ASSEMBLY DETAILS

SCALE:  
AS SHOWN  
DATE:  
OCT. 04, 2018  
DWG:  
HOR - 010