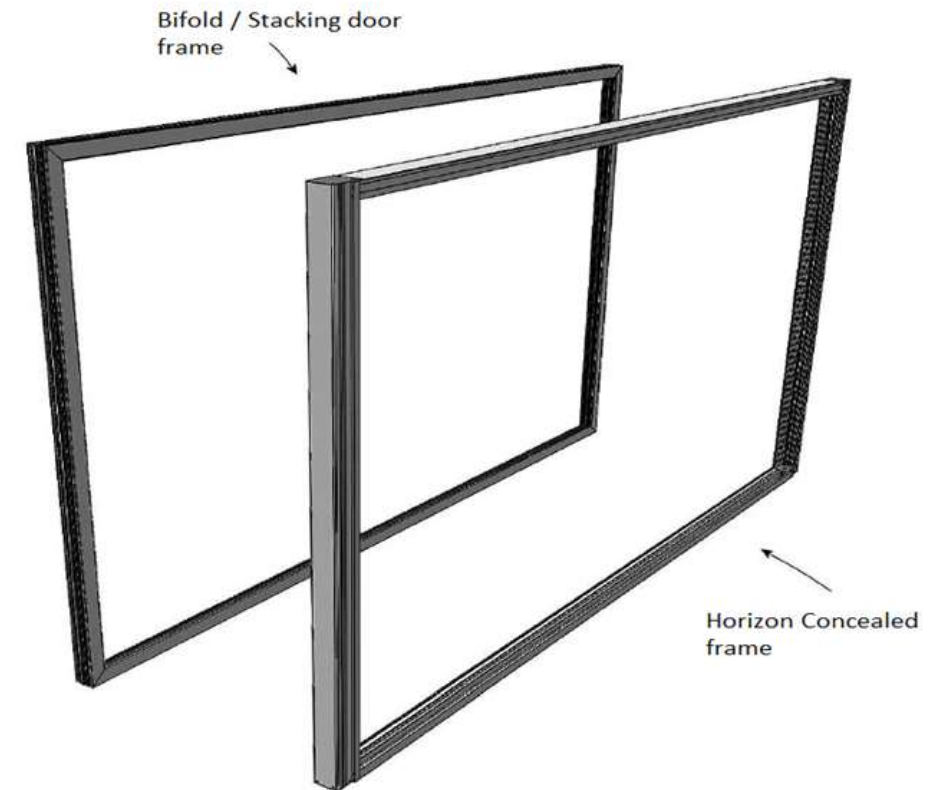


# Wizard Screens

**80mm / 100mm Integrated Horizon  
4 Sided Frame - **Double****

1. Read fully before beginning
2. Components are cut to size and predrilled for convenience
3. Installation typically requires two people

**!** Call 604-299-4426, or email [support@wizardscreens.com](mailto:support@wizardscreens.com)  
prior to starting if you have any questions

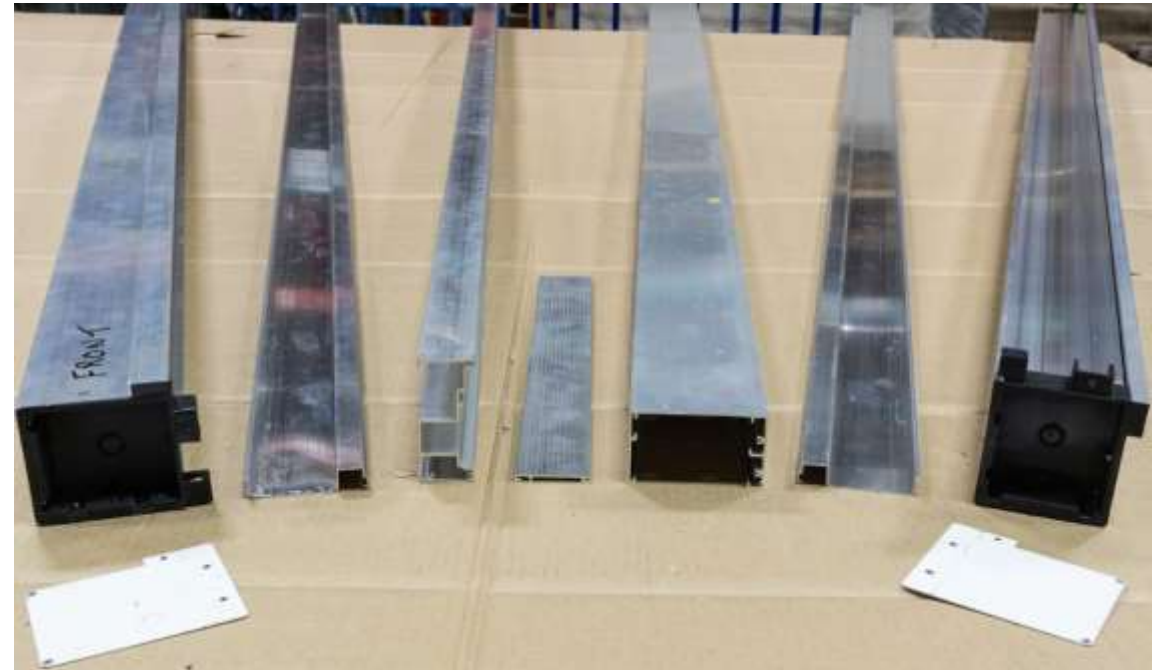


## Tools

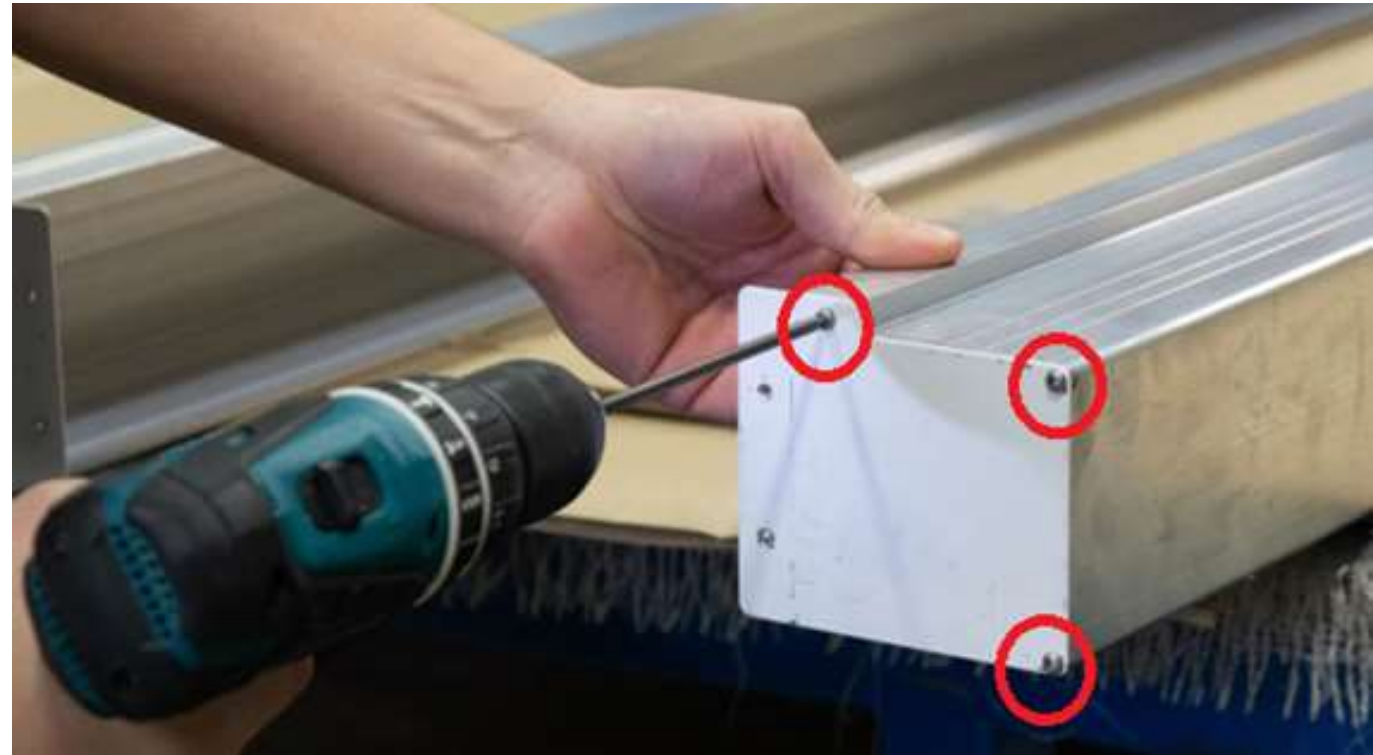
1. Power Drill / Driver
2. Level
3. Shims
4. Ladder

## Components List for 4 - sided frame - **DOUBLES**

1. Header **x2**
2. Jamb **x2**
3. Jamb Block **x2** (jamb block located inside jamb)
4. Jamb Filler **x2 mill**
5. End plates **x2**
6. Sill cover **x1**
7. Sill Riser **x 2**
8. Screw pack



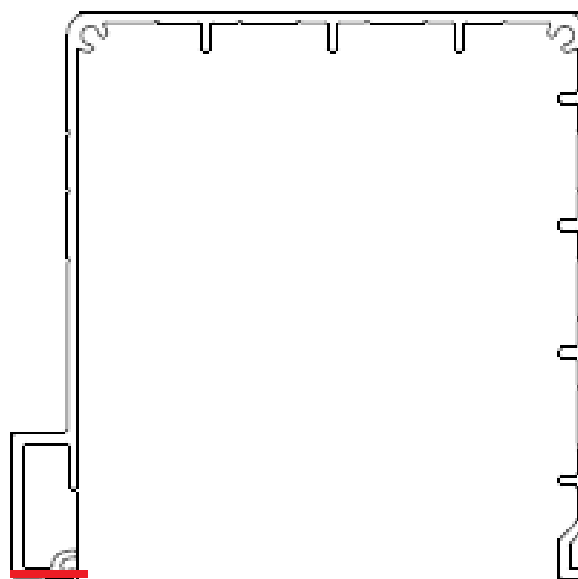
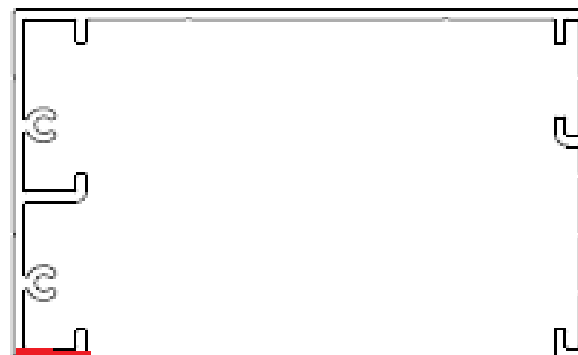
3 - #6 x 3/4" self-tapping screws provided for each side  
Do this for both left and right



**!** Make sure jamb block is flush top and bottom once screw is installed.

Position the header onto the jamb extrusion

**!** Ensure that you matched the profiles as illustrated before fastening

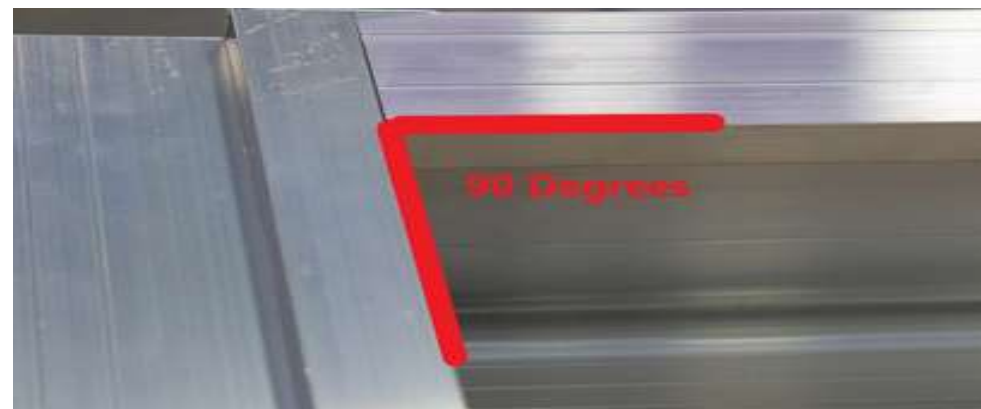




2 - #6 x 1 1/2" self tapping screws provided for each side

Connect both top corners before moving to next step

**Note:** Double **will have 2 headers**. Do each top corner separately before mounting into rough opening - there will be a butt joint once installed into the rough opening.



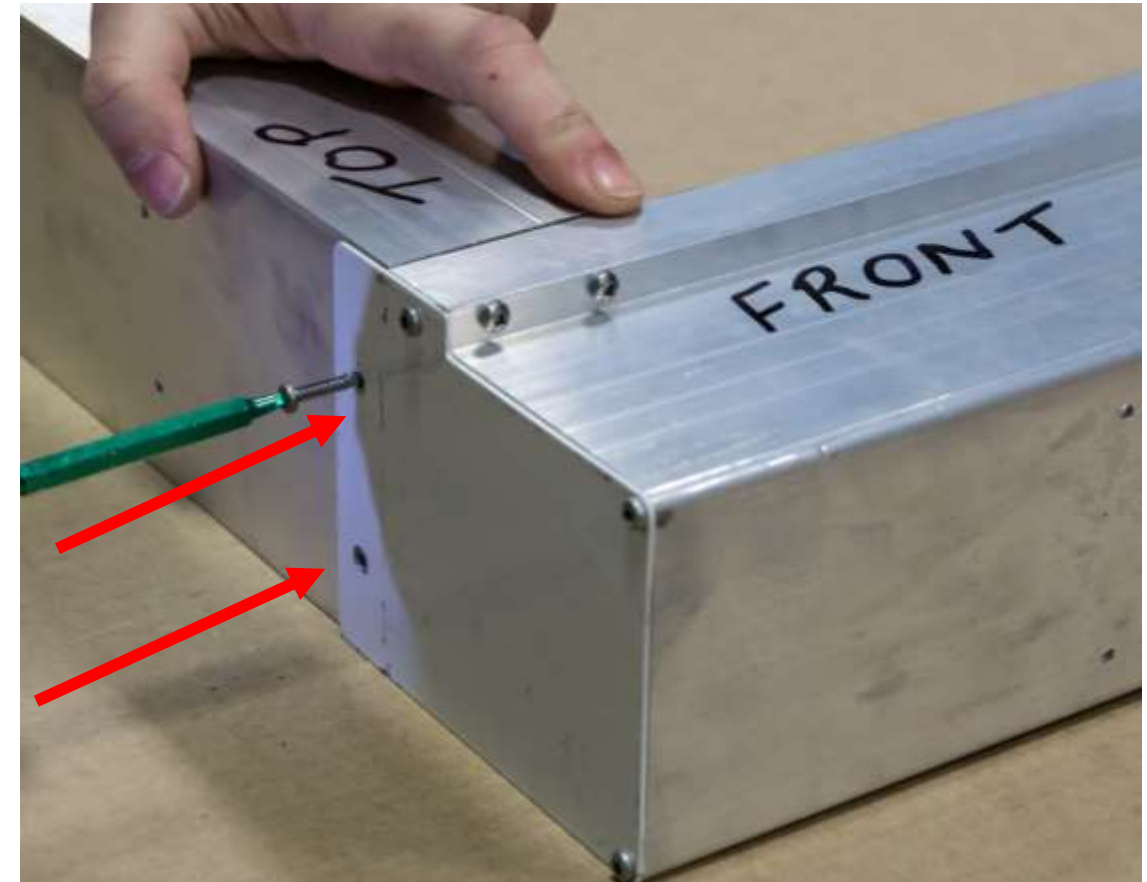
**!** Make sure corner is even/90 degrees and there are no gaps (>1/16") in the connection points

#6 x 1/2" self tapping screws provided for each side

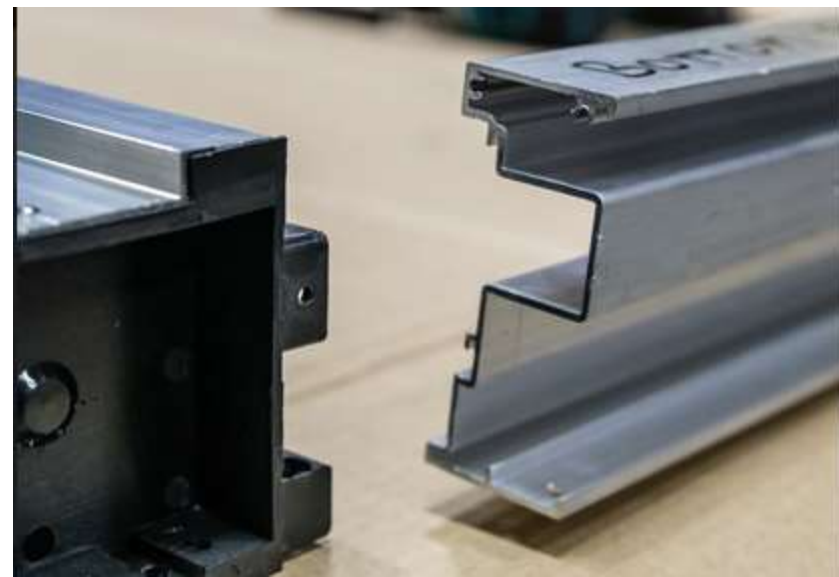
Place the aluminum headers between the 2 jambs

Attach from the **top** through the 2 holes in each end plate

Connect both top corners before moving to next step



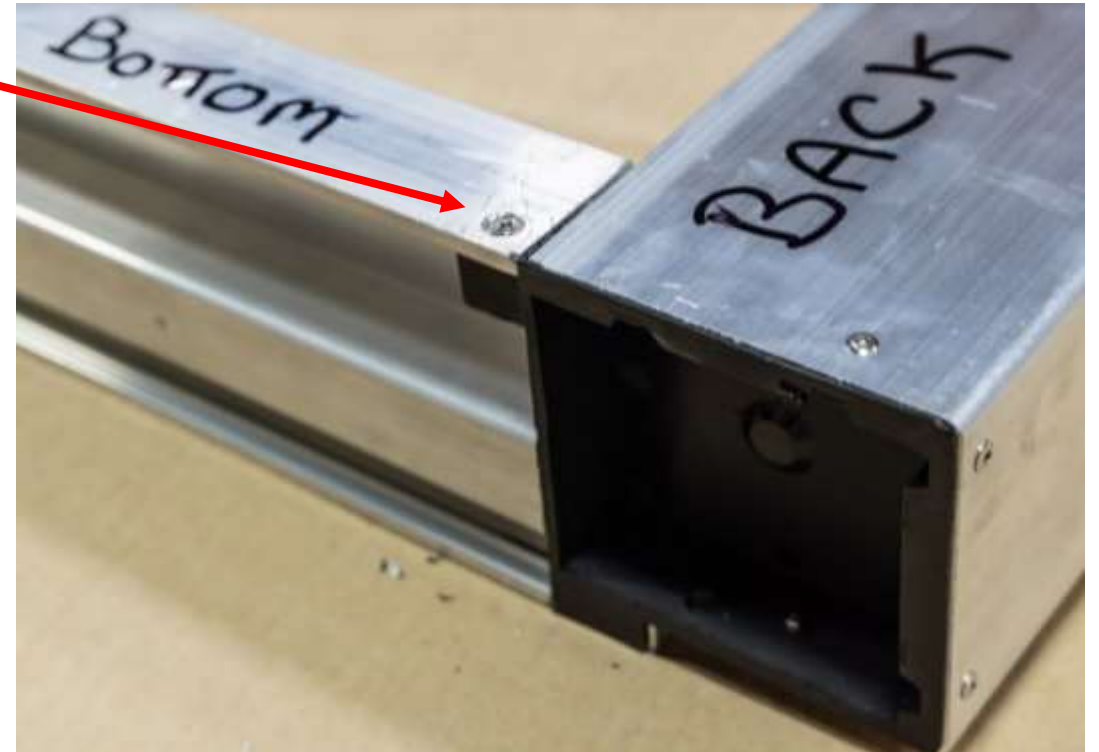
Attach the lower sill risers to the Jamb extrusion on both sides





Attach the lower sill riser to the Jamb extrusion on both sides

On the back, fasten together on each side



Pre check rough opening for plumb, level and square.

When frame goes into rough opening it needs to be squared off, shimmed, and screwed into the rough opening so it is plumb, level and square - pay special attention to bottom surface.

**!** If you have a “hump” or “dip” in the middle then you will need to possibly shim the frame up (for hump) on the sides so the bottom of the frame is level with the highest point in the floor wherever that might be, if you had a dip then when the screen unit goes in the tracks will need shimming so they are level.

The same goes for sides and top.



- 1) Lift frame into opening. If installed inside the house, “front” faces to the interior and the back to the exterior.
- 2) Drill on **guide lines** and screw frame into rough opening using #8 x 2” self tapping screws or equivalent depending on the mounting surface - **Install 2 screws every 12” - 16” down the jamb**
- 3) Once complete, re-check install for plumb, level and square, make sure there are no bows or bends in the aluminum
- 4) Repeat on opposite side



For double door a butt joint might be required in the rough opening. Install one side of the frame temporarily and get the other side into position, once into position you can begin line up both sides and make any adjustments. Make sure you have at least 4 screws installed within 1” of the butt joint to ensure its strong.

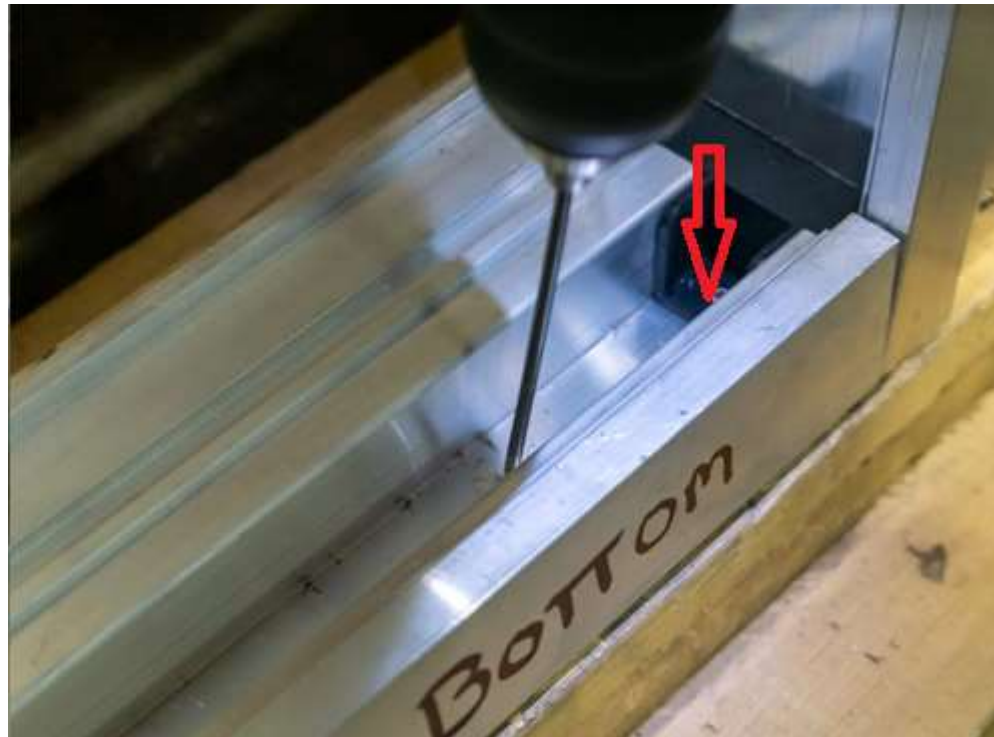


**Install lower sill:** Drill and fasten lower sill with 1" Robertson (square) screws, approx. every 12" - 18"  
First screws are placed at the RED arrow in each end

Install jamb inserts (note orientation) remove once the installation of the screen begins

\*Install screens as late as possible in the construction phase to avoid any damage.

Push the jamb insert all the way down tight to the floor



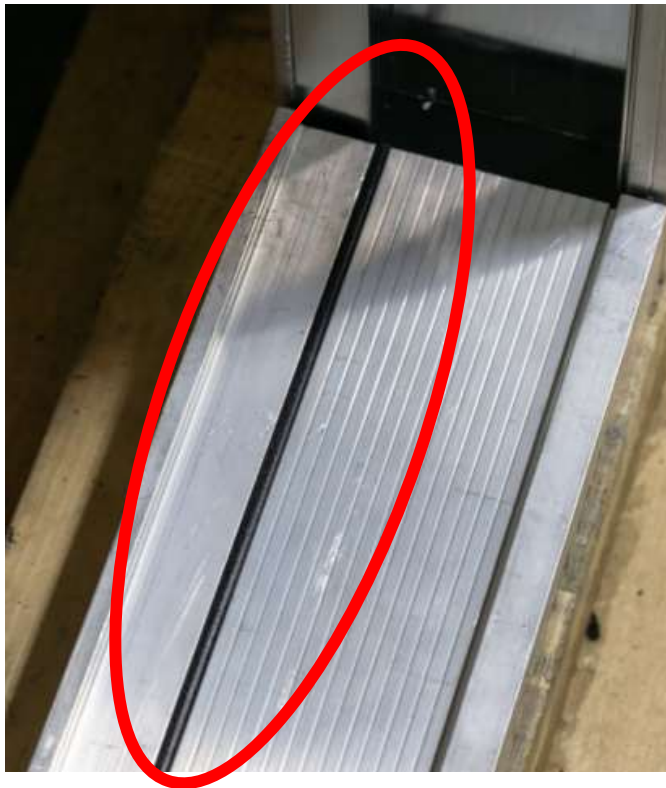






# Installing the Screen

Remove black spline



Slide the cover and remove





Carefully remove jamb inserts

Install header inserts (there are 2)  
\*note position of track channel to  
line up with the pull-bar

**! Note Orientation with header  
inserts and will look as below  
(installed in next steps)**



Install Header Insert ! take note of orientation it only goes in one way correctly and is difficult to get out.  
Doubles have 2 inserts.





Install housings



**Upper and lower track runners**

Counter-sink the black track runner



**Upper and lower track runners**

Trim the top edge only at 45°



**Lower track runner**

Pull it out approx. 8"



**Upper and lower track runners**

Check track runner is clear of debris



Release brake with supplied wedge



Install brake latch on receiver end of tracks



Extend track runner, lift pull bar



Slide over metal guide onto mesh, tight to housing nipple



Lower pull bar



Slide track through and over housing nipple



Interlock the track and fit in retaining spline





Tilt the upper track into the header, and slide it back into the empty jamb



Slide the upper track into the jamb filler cavity on receiver side



With the brake released, feed the track through the pull bar and onto the mesh



Tilt upper tracks into the header and release them

Feed the **extended track runner** onto top zipper, ensuring it's tight to housing

Release the track to let it sit in the track channel

You will have a gap in the middle





## Tracks Latches

The upper and lower track latches now fit into place, you might need to trim the track runner for a tight fit, fasten in place with the screws.

Upper  
Track  
Joiner



Lower  
Track  
Joiner

