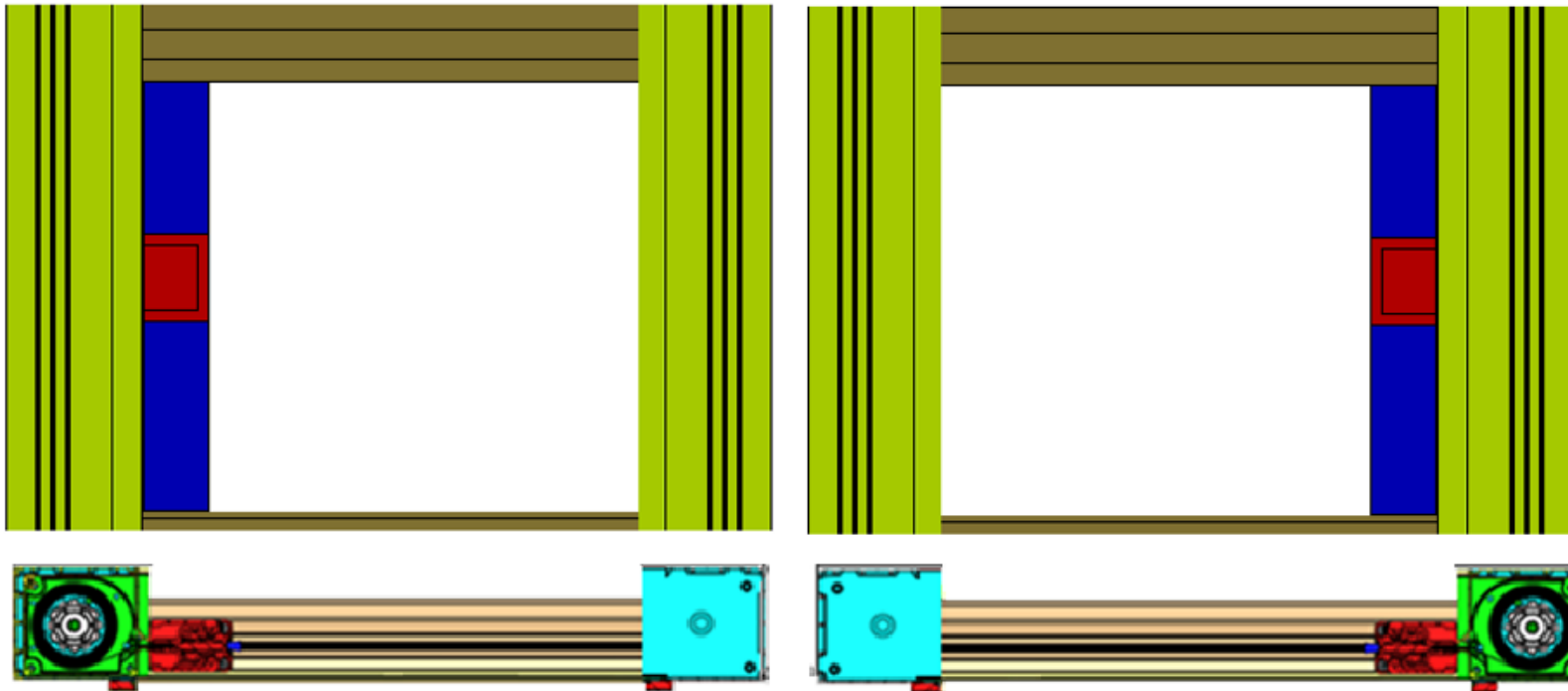


Wizard Screens

100mm Integrated Horizon Frame
3 Sided Frame - Single

1. Read fully before beginning
2. Installation typically requires two people

! Call 604-299-4426, or email support@wizardscreens.com prior to starting if you have any questions



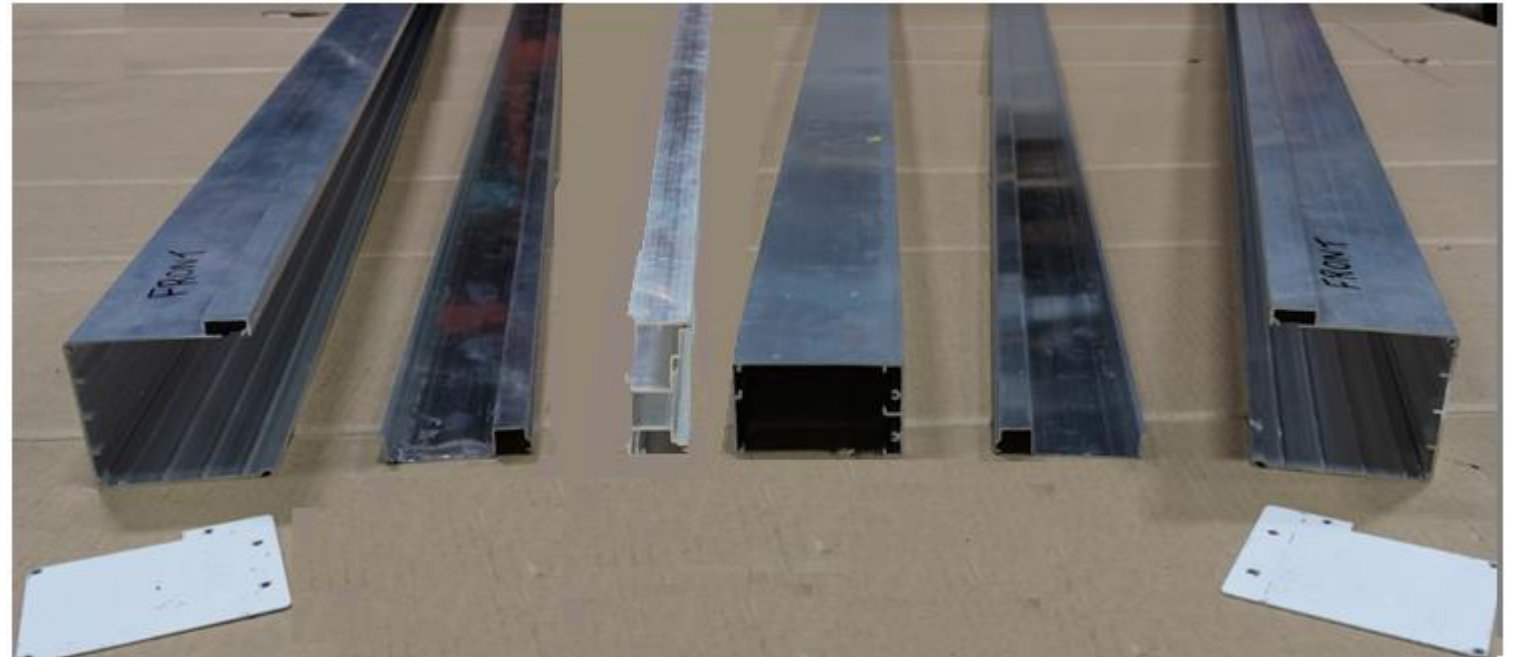
Screen orientation in frame

Tools

1. Power Drill / Driver
2. Straight-edge / 2-way Laser
3. Shims
4. Ladder

Components List for 3-sided frame - **SINGLE**

1. Header
2. Header Insert
3. Jamb
4. Jamb Block (jamb block located inside jamb)
5. *Jamb Filler **mill / painted**
6. End plates
7. Screw pack

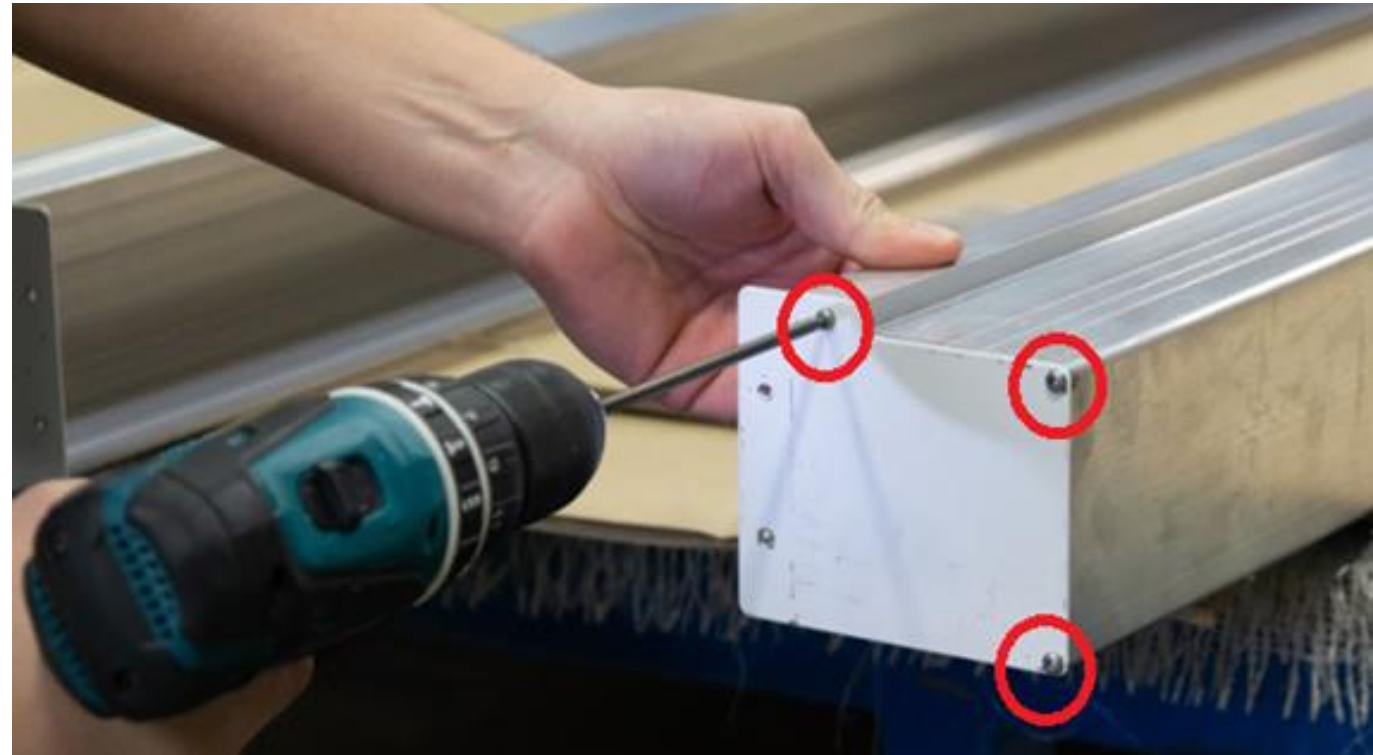


You do not require the Housing Alignments jig or locator pins

***Mill Jamb Filler not included if you order screen at the same time.**

1 Painted filler will be included.

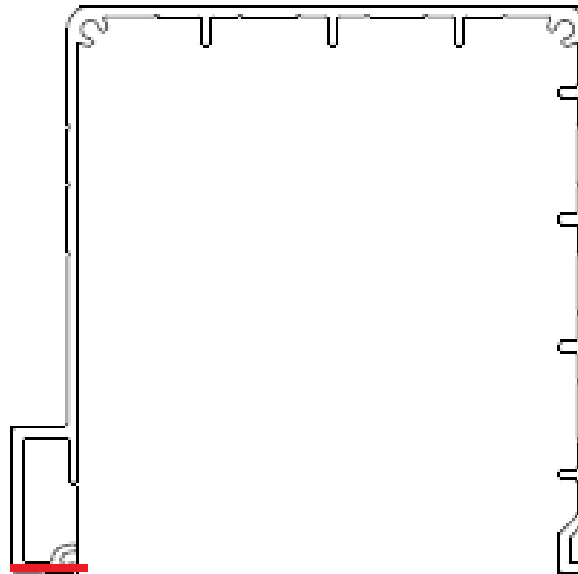
3 - #6 x 3/4" self-tapping screws provided for each side
Do this for both left and right



! Make sure jamb block is flush top and bottom once screw is installed.

Position the header onto the jamb extrusion

! Ensure that you matched the profiles as illustrated before fastening in the next step



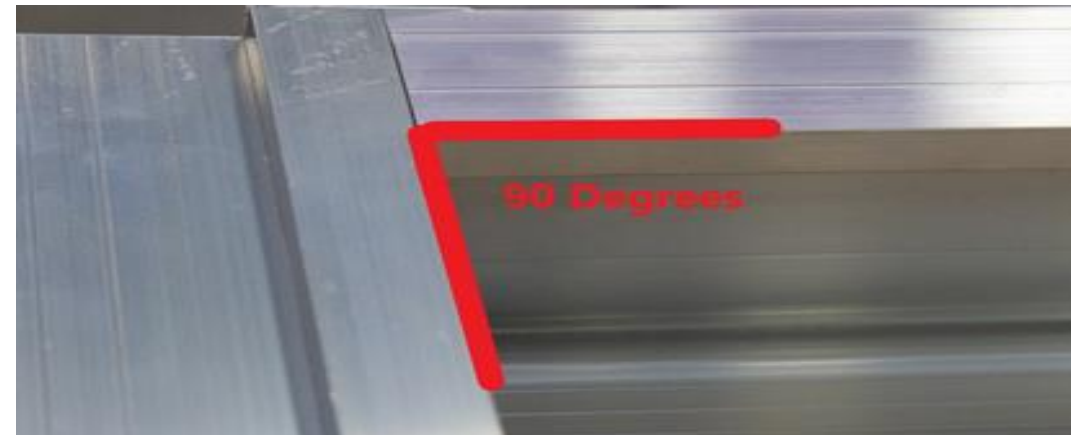
2 - #6 x 1 1/2" self tapping screws provided for each side

Place the aluminum header(s) between the 2 jambs

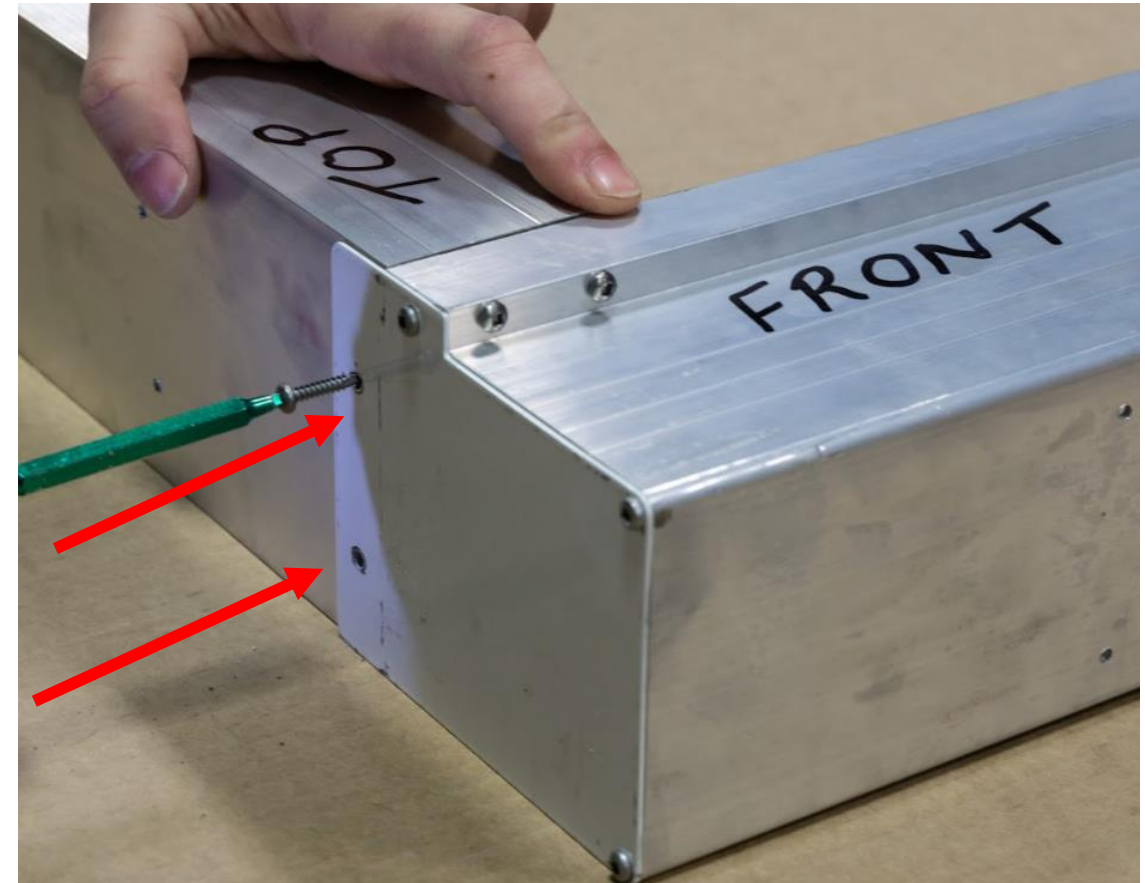
Connect both top corners before moving to next step



! Make sure corner is even/90 degrees and there are no gaps
($>1/16''$) in the connection points



#6 x 1/2" self tapping screws provided for each side
Attach from the **top** through the 2 holes in each end plate
Connect both top corners before moving to next step



Pre check rough opening for plumb, level and square.

When frame goes into rough opening it needs to be squared off, shimmed, and screwed into the rough opening so it is plumb, level, square and straight - pay special attention to bottom surface.

! The same goes for sides and top.



- 1) Lift frame into opening. If installed inside the house, “front” faces to the interior and the back to the exterior.
- 2) Drill on **guide lines** and screw frame into rough opening using #8 x 2” self tapping screws or equivalent depending on the mounting surface - **Install paired screws every 12” - 16” down the jamb**
- 3) Once complete, re-check install for plumb, level, square and straight and there are no bows in the aluminum
- 4) Repeat on opposite side



Install jamb inserts - note orientation, and push the jamb insert all the way down tight to the floor

These help hold the integrity of the frame while construction continues - these are removed once the installation of the screen begins

With the jamb filler installed, check frame for Plumb, Level, Square, Straightness, and no Twists which is caused by overtightening the anchors.

It is recommended that the screen be installed as late as possible in the construction phase to avoid any damage.



Installing the Screen

Before Installing the Screen: Check the Frame is still Plumb, Level, Square, and not Twisted

Carefully remove jamb inserts, install painted Jamb filler on receiver side, (packed with screen)



Install Header Insert

! Note Orientation with header insert and upper track will look as below (installed in next steps)



Install housing, lean
top in and drop down

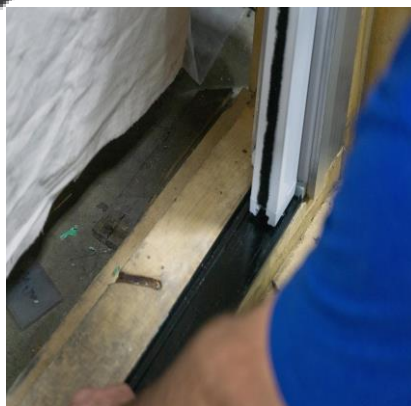


Orientation of header
insert / pull-bar (tracks
not yet installed)



Release brake using supplied **RED** wedge



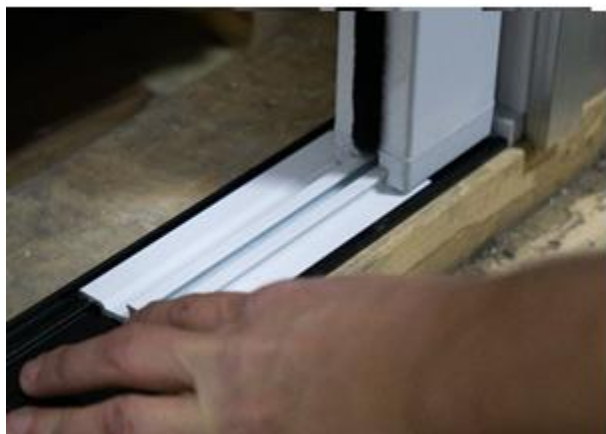


Slide track mount under pull-bar tight against housing endcap.



Notched side of lower track mount on receiver side

Using the supplied track cut-off , insert it through the pull-bar and slide around nipple and tight against housing, see picture. Drill and countersink lower track mount in pairs 12" – 18" inches. Fasten down ensuring track mount is level

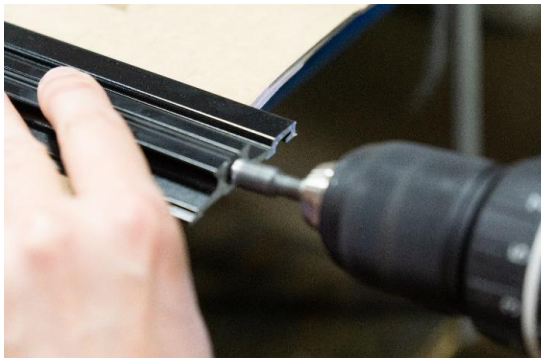


Cut Upper Track runner at the housing end to fit tight between upper housing endcap and latches/track joiners

Cut Lower Track runner at the housing end to fit tight between spigot on the lower housing endcap and latches/track joiners

Counter sink and debur track runner after cutting – Do not over cut runners

Counter-sink the black track runner



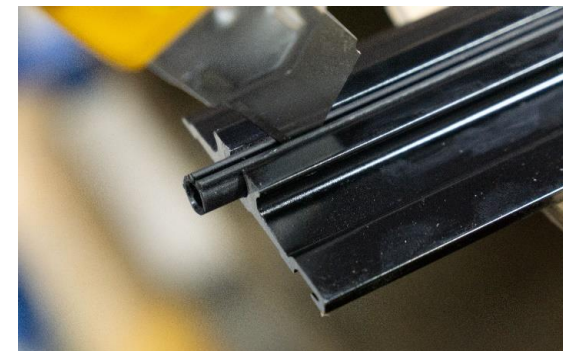
Trim the top edge at 45°



Pull it out approx. 8"



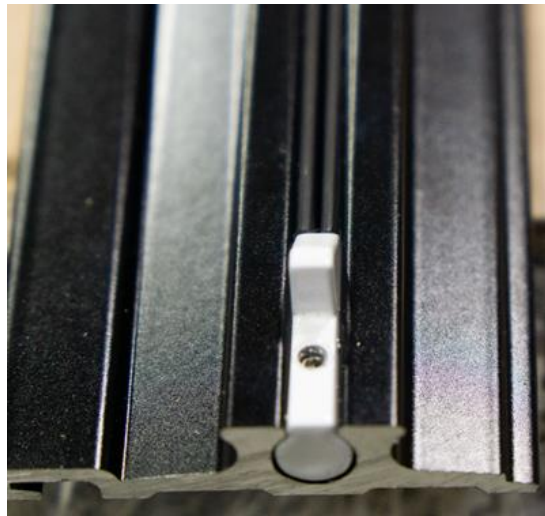
Check track runner is clear of debris



Lift pull bar, gently slide track runner onto the zipper teeth, tight to nipple on lower endcap – see highlight in last panel below

At the receiver end of tracks you have brake latches on upper and lower tracks (shown in white below)

Remove the track cut-off



Drop pull bar, feed lower track through the pull bar



Interlock the track into the lower track mount



Track tight to housing



Insert the spline



Tilt the upper track into the header, and slide it back into the empty jamb

Slide the upper track into the jamb filler cavity on receiver side

With the brake released, feed the track through the pull bar and onto the mesh

Release it to let it sit in place in the track channel



- 1) *Frame is Plumb, Level, Square, and not twisted*
- 2) *Housing is flat on the ground AND plumb*
- 3) *Housing mesh slot has not been squeezed during the install*
- 4) *Housing is square with the tracks*
- 5) *The M3 pin is correctly aligned and in position on the top track*
- 6) *Top track is tight to the housing*
- 7) *The lower track is tight to the housing and enclosing the housing endcap spigot*
- 8) *Tracks are levelled parallel and plumb front to back across the opening*
- 9) *Zipper are in the keyhole slots of the housing endcaps*
- 10) *Track are sprayed with dry silicone*