



3-Sided Frame

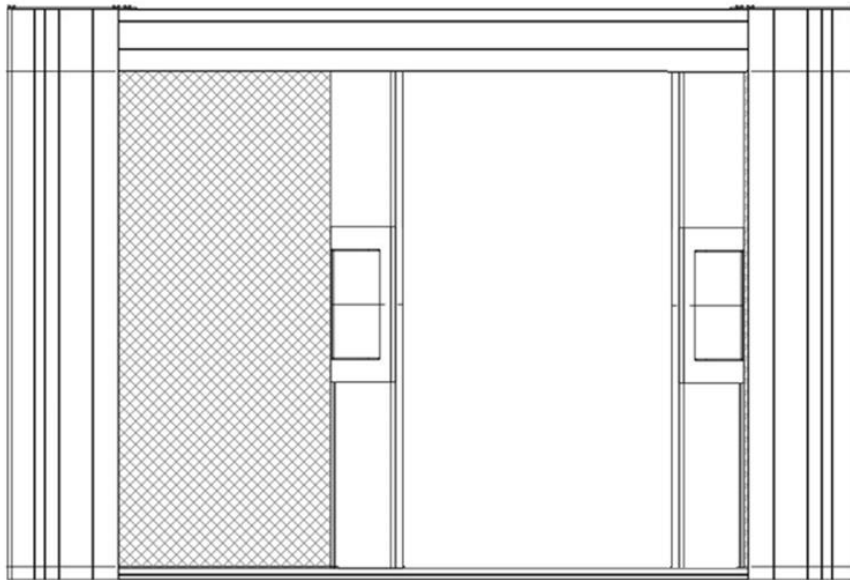
100mm DOUBLE Screen Installation

Minimum 2 installers required

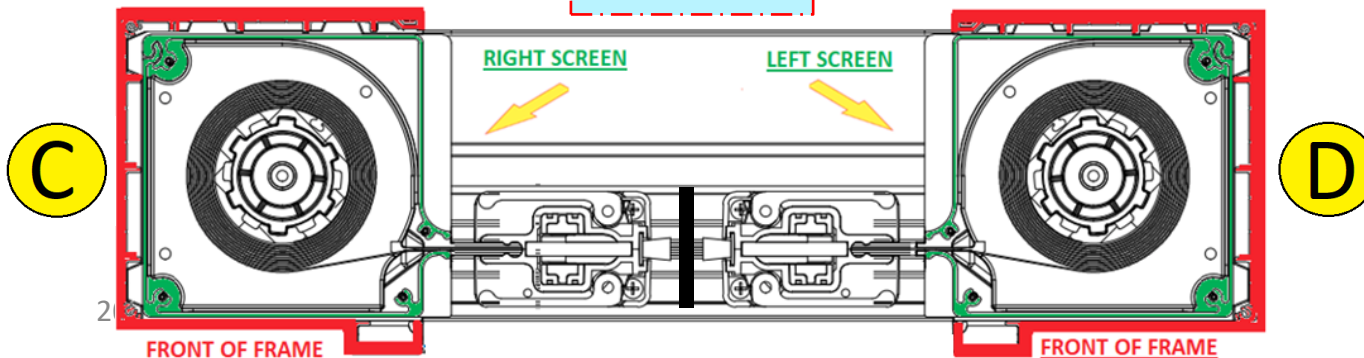
THE
HORIZON

Integrated System

FRONT of FRAME VIEW



AERIAL VIEW



Spray
tracks *only*
with dry
silicone.

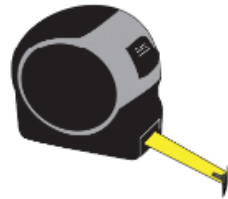
1. Confirm the frame is **plumb, level, straight, square, and free of twist**. Adjust where necessary if possible.
2. Confirm the sub straight is **level and straight**. Be aware that if it is *not*:
 - the screen may sag a little; *and*
 - the pullbar may bind,both at where the humps in the floor are. Shim where necessary.

REQUIRED

Level



Tape Measure



Pencil



Shims



Integrated System

9/64 and 1/8
Drill Bits



#1 and #2
Robertson
Driver Bits



Dry Silicone
Spray



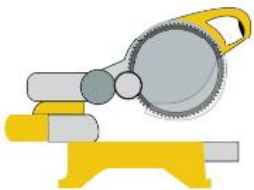
2-way Laser Level Kit



Flat Pry Bar



Chop Saw



Drill



Step Ladder



Vacuum



RECOMMENDED

Laser Distance Measure



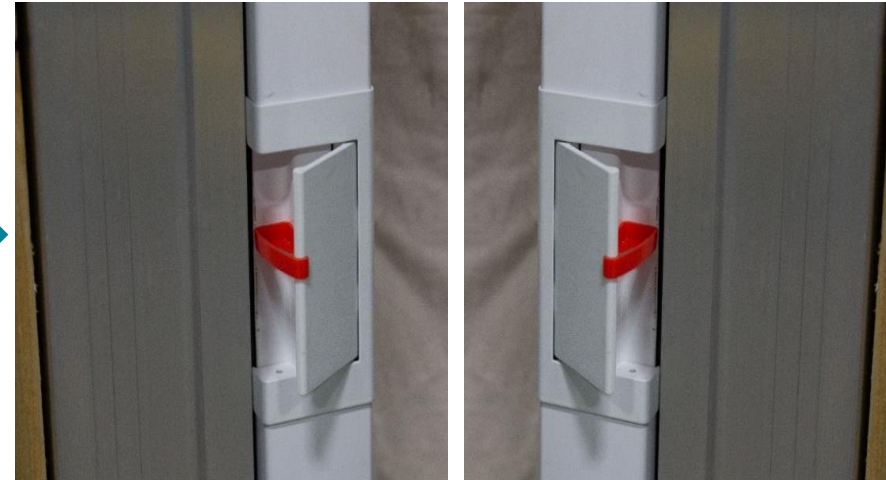
Carefully remove
temporary mill jamb fillers.



1. Put housing in place. See
“Considerations” for orientation.



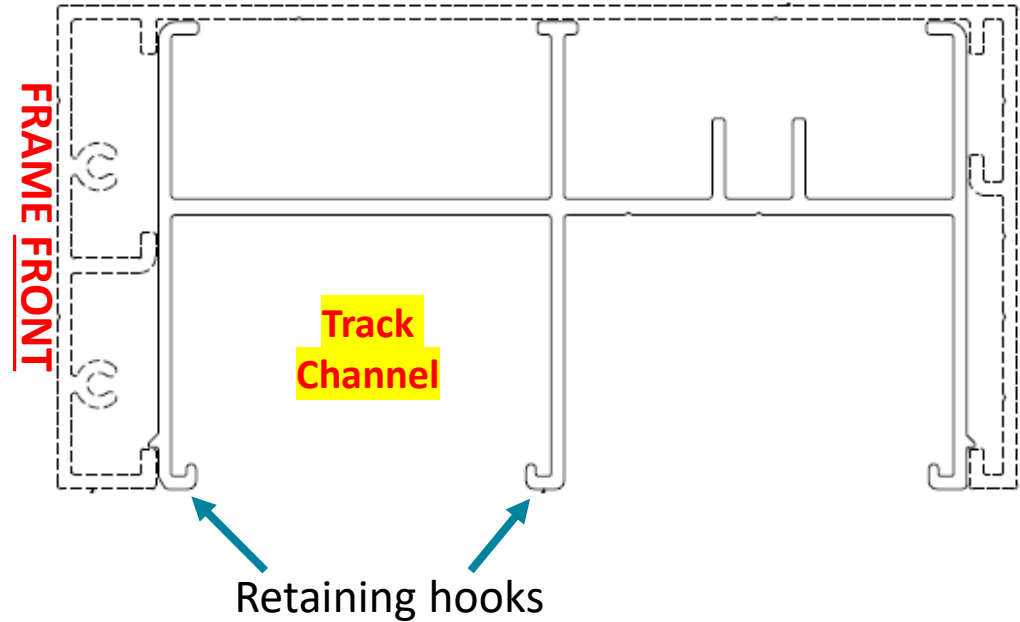
2. Release brakes using
supplied **RED** wedges.



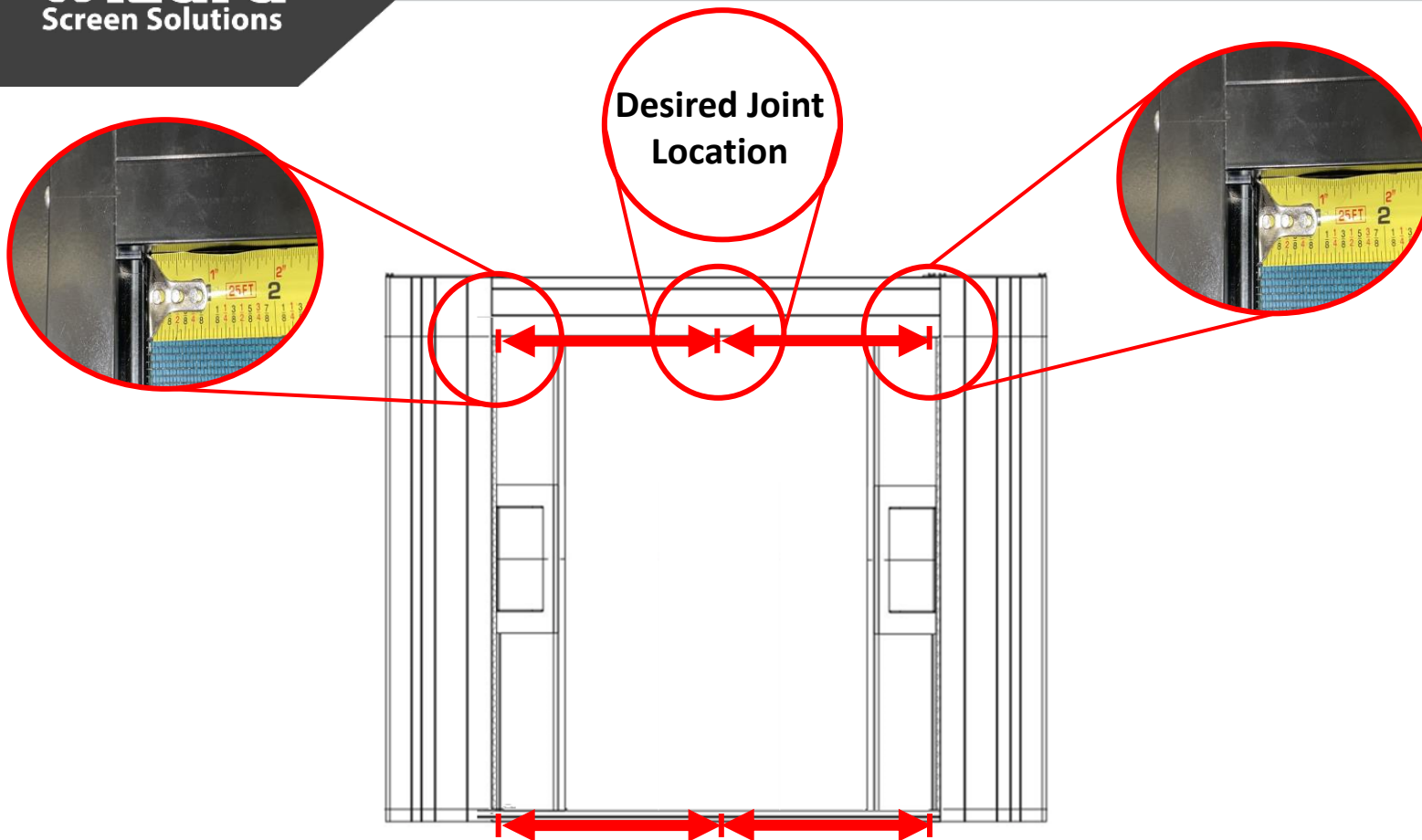
1. Attach header inserts



! Ensure insert is oriented in header as shown



Total header insert length will be **1/8" shy**.
This means the housing will be removable
without having to remove the header
insert. Simply lift unit and tilt bottom out.



*****Make sure the housing is fully inside the jamb when measuring. Housing must *not* lean out of jamb. Do not accidentally measure too short.*****

Lower track:

1. Measure at **bottom** between **housing endcaps** and **desired joint location**. Record lengths.
2. *Subtract* another **5/16"** (*half* of lower track joiner thickness) from each length and cut lower tracks.
3. Cut lower track runner to fit between **lower endcap spigot** and **lower track joiner**.

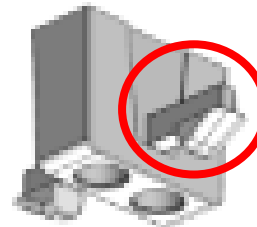


ALTERNATIVELY: Temporarily affix track joiners and measure to those.



Upper track:

1. Repeat above steps for **upper**.
2. Cut upper track runner to fit between **upper endcap** and **upper track joiner latch**.



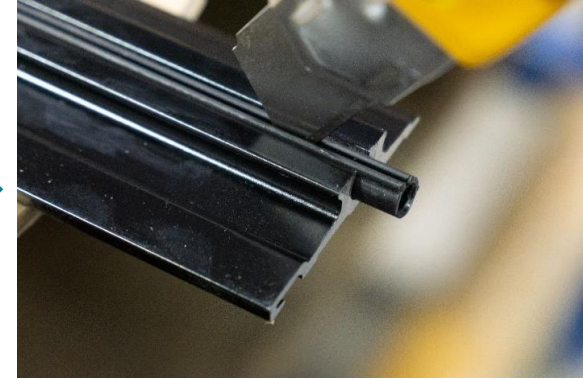
DO NOT CUT TRACKS AND RUNNERS TOO SHORT



Slightly counter-sink.

Barely trim the corners off.

Deburr and clear debris.

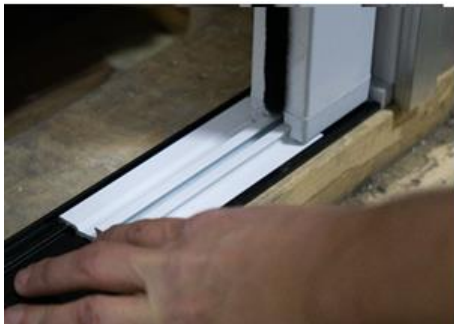


Not applicable if completed during frame installation.



1. Lay down lower track mount.
2. Insert track cut-off through the pull-bar. Push track fully against housing so that it encompasses spigot. Housing and track mount *must* be square to each other – **no gaps**.
3. Drill and countersink the lower track mount as shown below and fasten with FH screws.
4. Drill and countersink remaining holes every 18" in pairs and fasten. Shim where necessary.
Housing and lower track mount must maintain alignment.
5. Repeat other side.

Tip! - use the lower track mount as a drill guide to mark the hole locations on floor surface for pre- drilling if required (ie. Tile or concrete floor that requires screw plugs).



1. Remove track cut-off.



2. Lift pullbar. Slide track runner along zipper.



3. Feed lower track through pullbar.



4. Push fully against housing – **no gaps.**



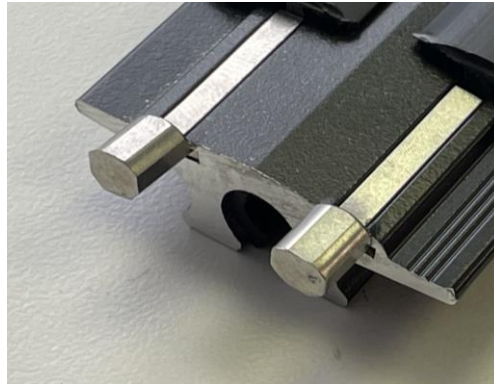
5. Interlock track and insert spline into groove.



6. Attach lower track joiner



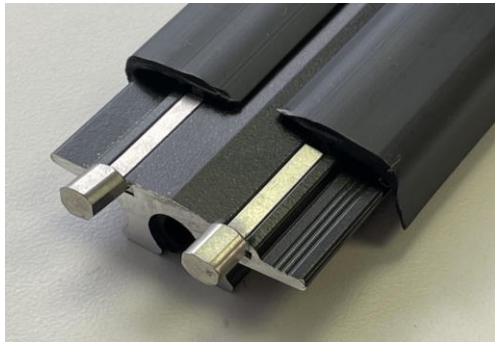
1. Insert track limiters into upper track wing slots on housing end **fully**.



! If track limiter is *not* fully inserted, screw head may interfere

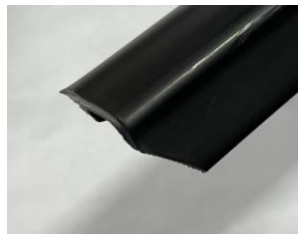
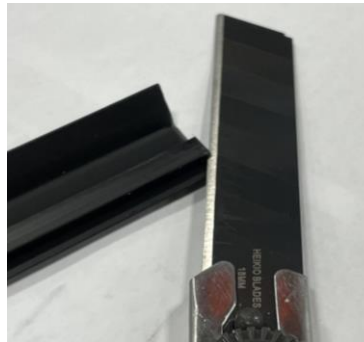


2a. Butt wings against



2b. Cut off insert part the length of track limiter.

OR

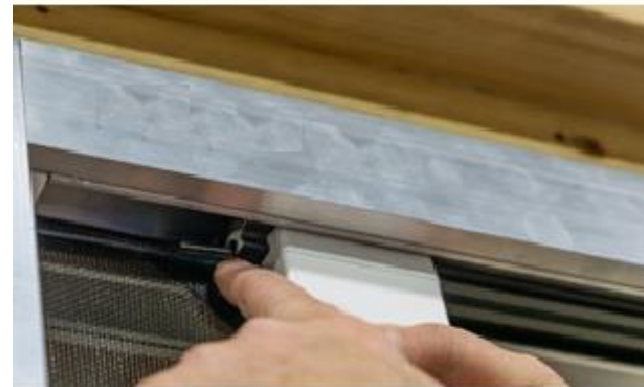


If cutting **wings** with scissors, cut angle off corner

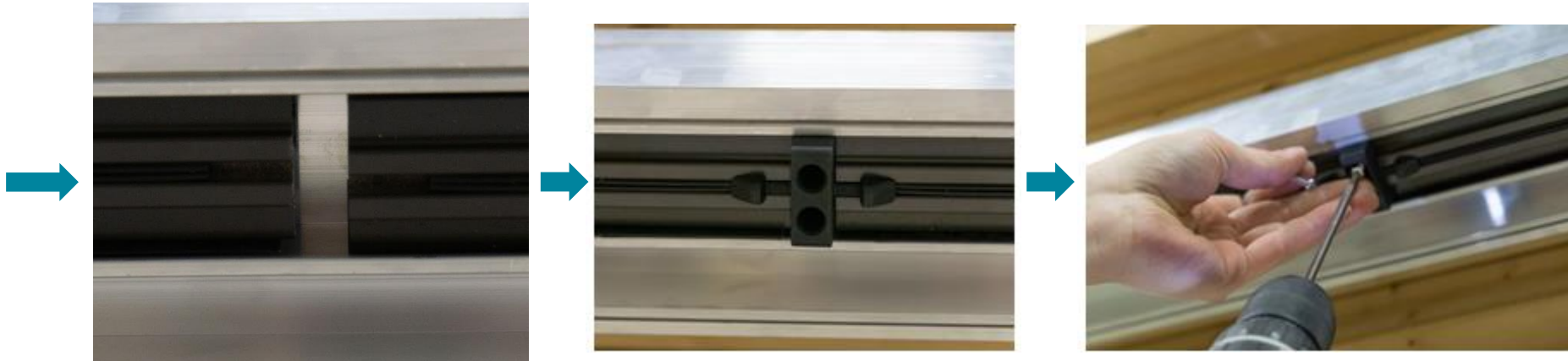
1. Insert upper tracks into the header insert track channel and release them. Tracks will initially overlap.



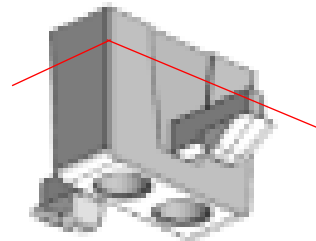
2. Feed track runner along zipper, then track through pullbar endcap, pushing fully against housing – **no gaps**. Repeat on other side.



3. Ensure track floats freely and that bottom of track is even with bottom of header insert.



!IMPORTANT: It *may* be necessary to cut the *top* of the upper track joiner **shorter**. Test functionality first.



This will be **magnet**,
not mohair.



TEST THE UNIT



Check the following:	✓ or ✗
Frame is Plumb, Level, Square, and not twisted?	
Tracks are level, parallel, and plumb side-to-side and front-to-back?	
Housing on the ground AND plumb?	
Housing mesh slot has not been squeezed during the install?	
Tracks are fully against the housing?	
The track limiters are on the entry end of the upper track?	
Tracks are fully against the housing?	
Track runners are not cut too short?	
Zipper are following through the housing endcap keyholes?	
Track runners have been sprayed inside with dry silicone ?	

! If any problems are not resolved, call 604-299-4426, or email support@wizardscreens.com **before leaving site!**

If necessary, review **The Horizon Troubleshoot Manual**