



## **4-Sided Frame**

# **100mm DOUBLE Screen Installation**

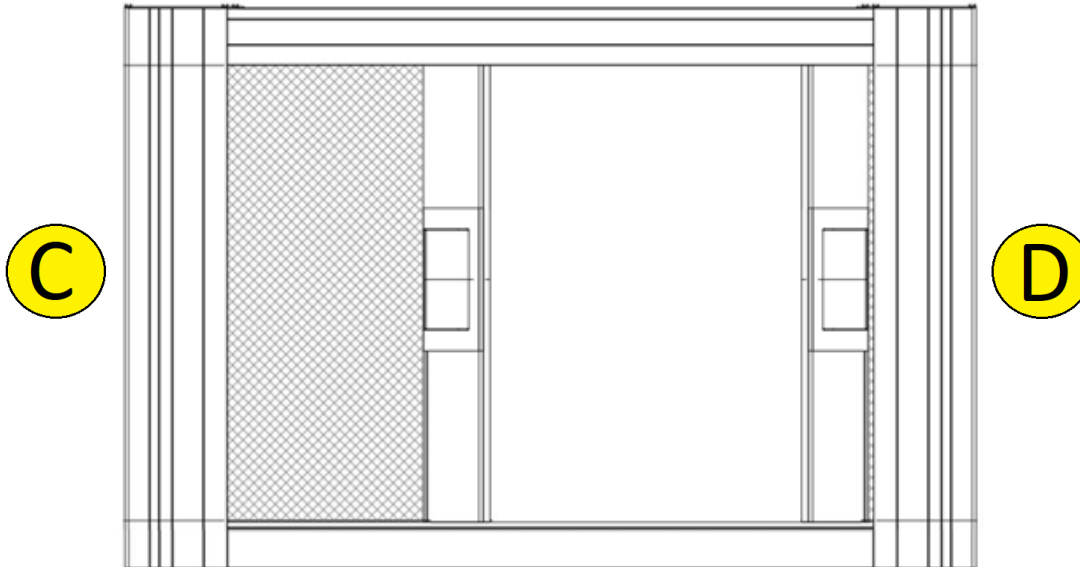
**Minimum 2 installers required**

THE  
HORIZON

Integrated System

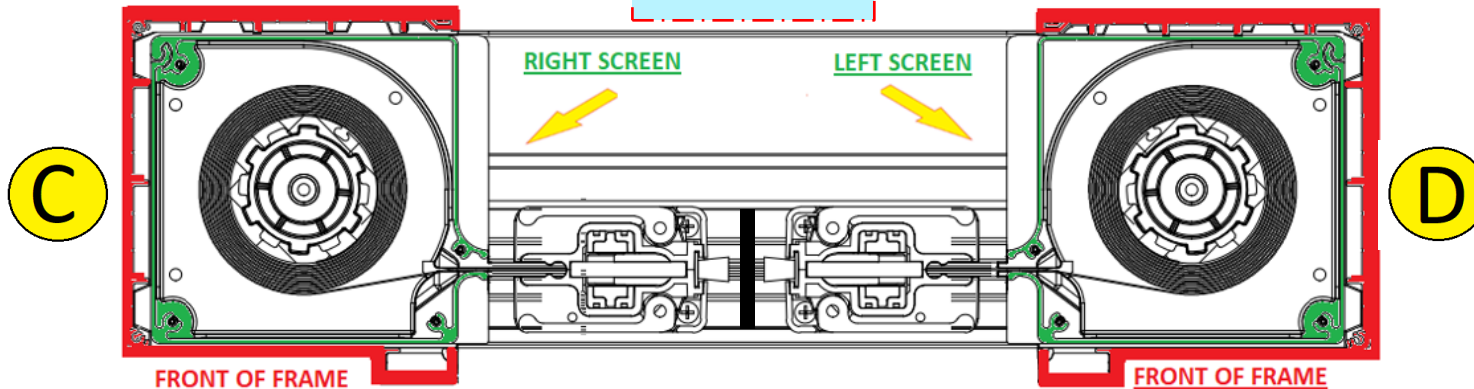
**!** Call 604-299-4426, or email [support@wizardscreens.com](mailto:support@wizardscreens.com) prior to starting if you have any questions

**FRONT VIEW**



Spray  
tracks *only*  
with dry  
silicone.

**AERIAL VIEW**



**FIRST**  
Confirm the frame is  
**plumb, level, straight,  
and square.**  
Adjust where necessary if  
possible.

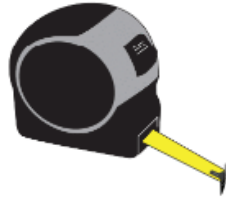
## REQUIRED

THE  
HORIZON  
Integrated System

Level



Tape Measure



Pencil



Shims



Flat Pry Bar



9/64 and 1/8  
Drill Bits



#1 and #2  
Robertson  
Driver Bits



Dry Silicone  
Spray



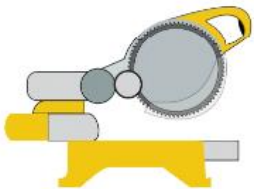
2-way Laser Level Kit



Utility Knife



Chop Saw



Drill



Step Ladder



Vacuum



Small  
Countersink Bit



## RECOMMENDED

Laser Distance Measure



1. Remove black spline



2. Remove temporary sill cover.



3. Carefully remove temporary jamb fillers.

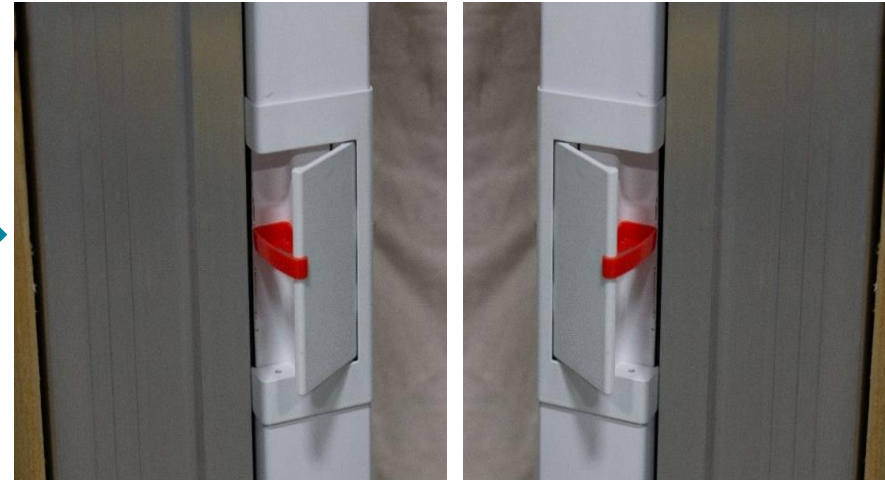




1. Install screen units. See “**Considerations**” for orientation.



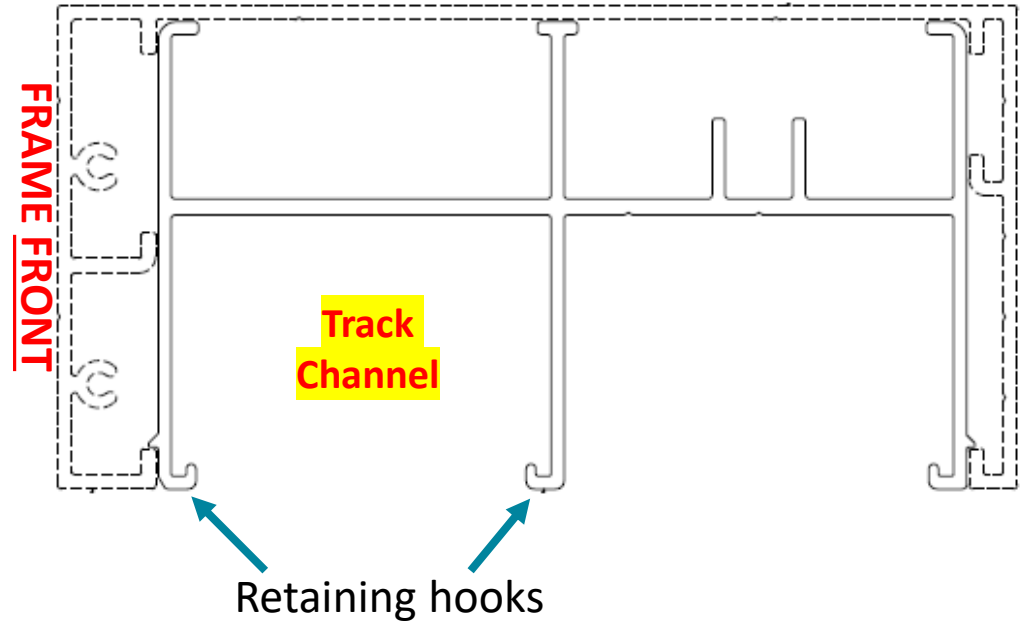
2. Release brakes using supplied **RED** wedges.



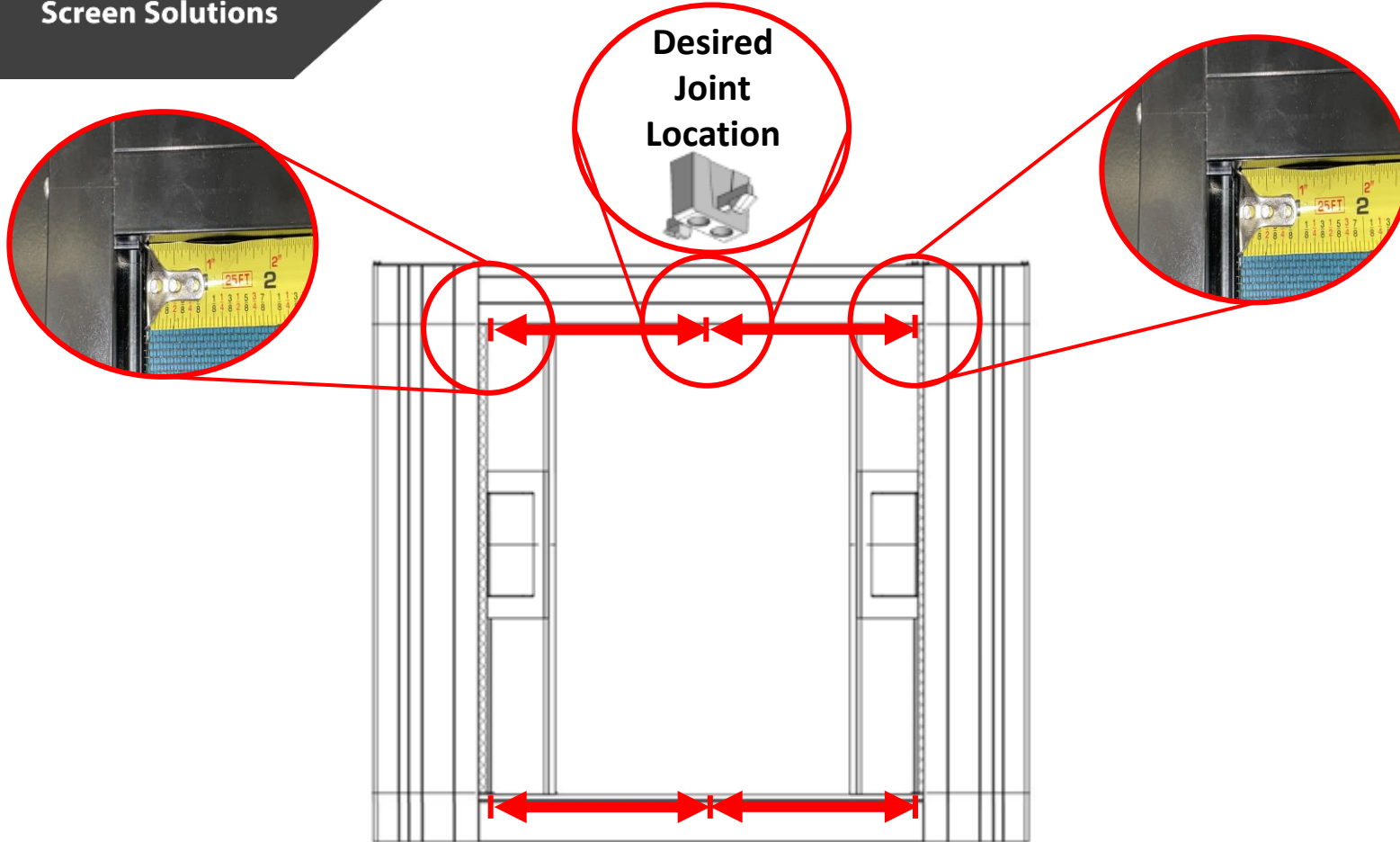
## 1. Attach header inserts



! Ensure insert is oriented in header as shown



Total header insert length will be **1/8" shy**.  
This means the housing will be removable without having to remove the header insert. Simply lift unit and tilt bottom out.



**\*\*\*FIRST, push header insert *fully against* housing, which must not lean out of jamb. Do not accidentally measure too short.\*\*\***



## Lower track:

1. Measure at **bottom** between **housing endcaps** and **desired joint location**. Record lengths.
2. *Subtract* another **5/16"** (*half* of lower track joiner thickness) from each length and cut lower tracks.
3. Cut lower track runner to fit between **lower endcap spigot** and **lower track joiner latch**.

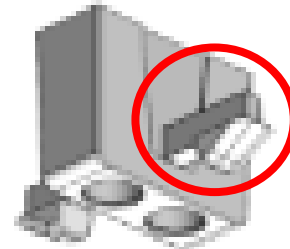


**ALTERNATIVELY:** Temporarily affix track joiners and measure to those.



## Upper track:

1. Repeat above steps for **upper**.
2. Cut upper track runner to fit between **upper endcap** and **upper track joiner latch**.



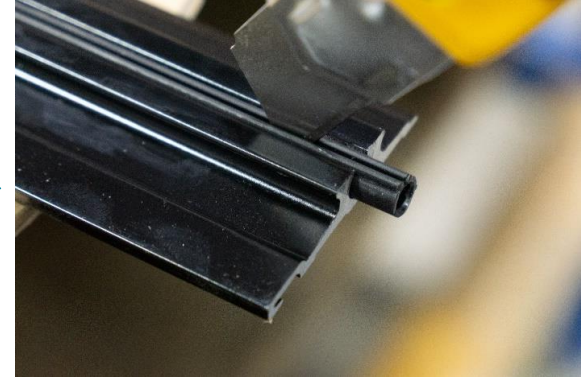
**\*DO NOT CUT TRACKS AND RUNNERS TOO SHORT\***



*Slightly counter-sink.*

*Barely trim the corners off.*

*Deburr and clear debris.*



1. Ensure the grooves are free of dirt to allow lower track to fully interlock.



**NO DIRT!**

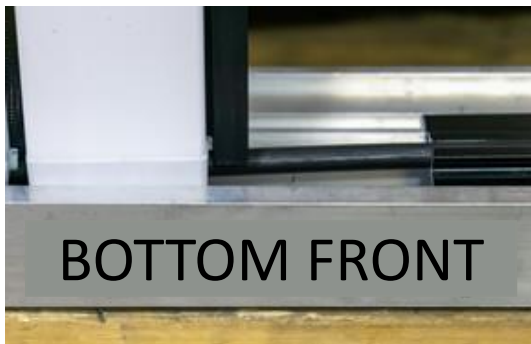
2. Extend track runner, lift pull bar.



3. Slide track runner onto mesh, against housing endcap.



4. Lower pull bar.



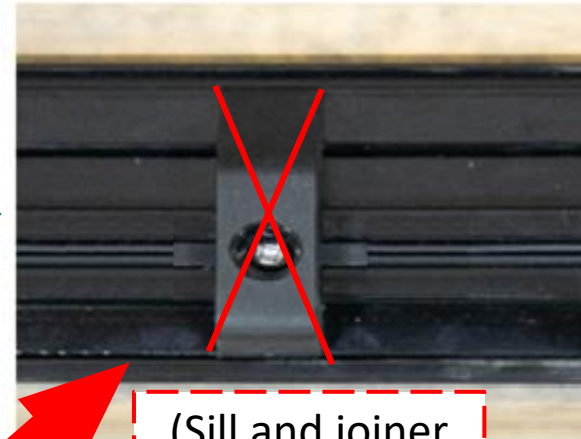
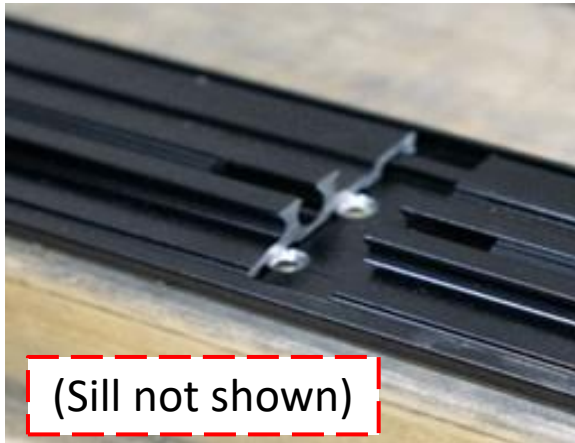
5. Feed track through pullbar endcap, pushing fully against housing – **no gaps**.



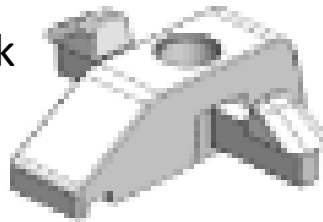
6. Interlock track with sill and fit in retaining spline.



## 6. Attach lower track joiner

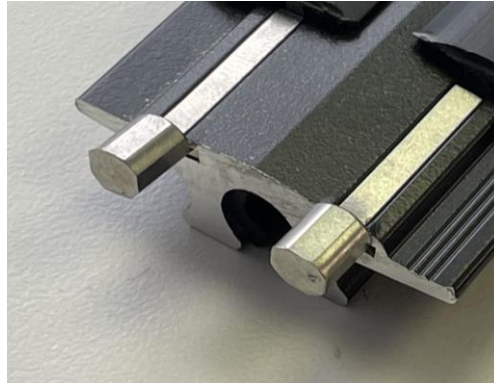


Lower track  
joiner with  
latches





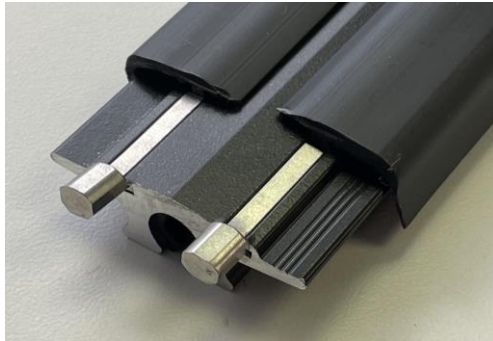
1. Insert track limiters into upper track wing slots on housing end **fully**.



**! If track limiter is *not* fully inserted, screw head may interfere**

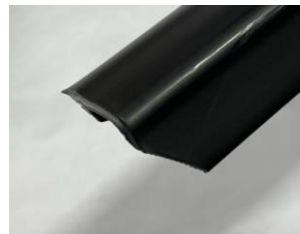
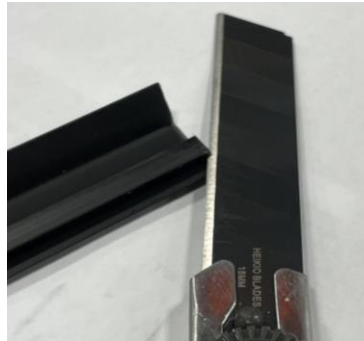


2a. Butt wings against



2b. Cut off insert part the length of track limiter.

**OR**



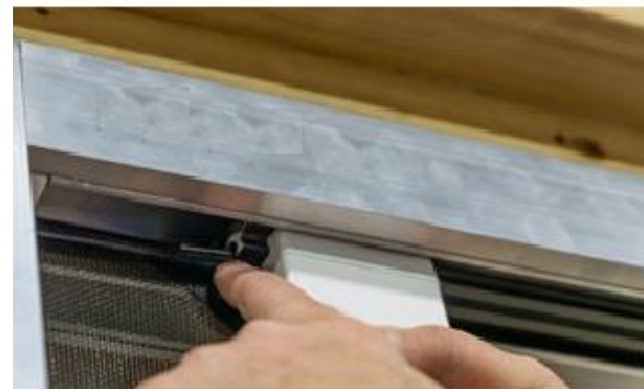
If cutting **wings** with scissors, cut angle off corner



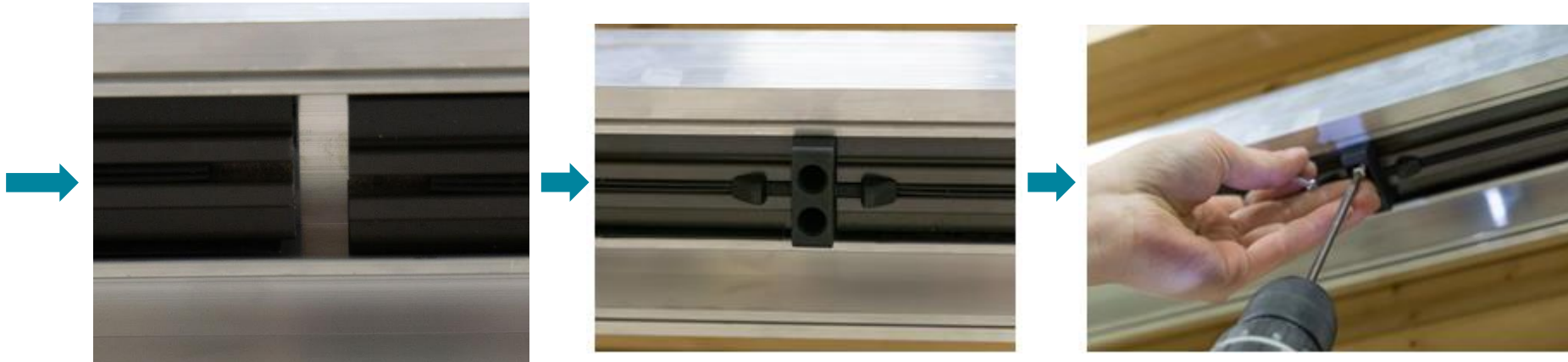
1. Insert upper tracks into the header insert track channel and release them. Tracks will initially overlap.



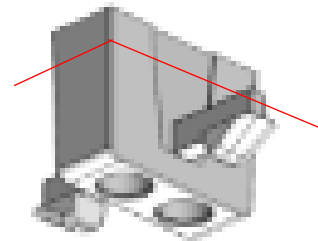
2. Feed track runner along zipper, then track through pullbar endcap, pushing fully against housing – **no gaps**. Repeat on other side.



3. Ensure track floats freely and that bottom of track is even with bottom of header insert.



**!IMPORTANT:** It *may* be necessary to cut the *top* of the upper track joiner **shorter**. Test functionality first.



This will be **magnet**,  
*not* mohair.



## TEST THE UNIT



Check the following:	✓ or ✗
Frame is Plumb, Level, Square, and not twisted?	
Tracks are level, parallel, and plumb side-to-side and front-to-back?	
Housing on the ground AND plumb?	
Housing mesh slot has not been squeezed during the install?	
Tracks are fully against the housing?	
The track limiters are on the entry end of the upper track?	
Tracks are fully against the housing?	
Track runners are not cut too short?	
Zipper are following through the housing endcap keyholes?	
Track runners have been sprayed inside with <b>dry silicone</b> ?	

**!** If any problems are not resolved, call 604-299-4426, or email [support@wizardscreens.com](mailto:support@wizardscreens.com) **before leaving site!**

If necessary, review **The Horizon Troubleshoot Manual**