



4-Sided Frame

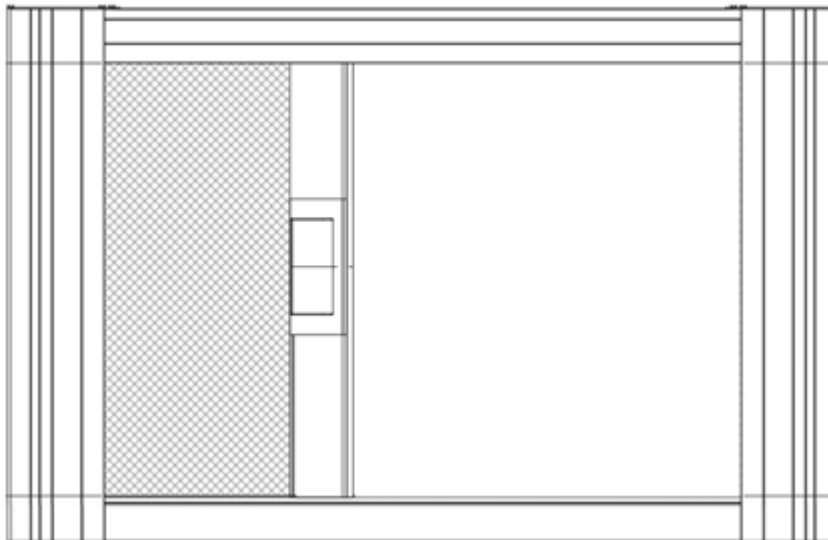
100mm SINGLE Screen Installation

Minimum 2 installers required

THE
HORIZON
Integrated System

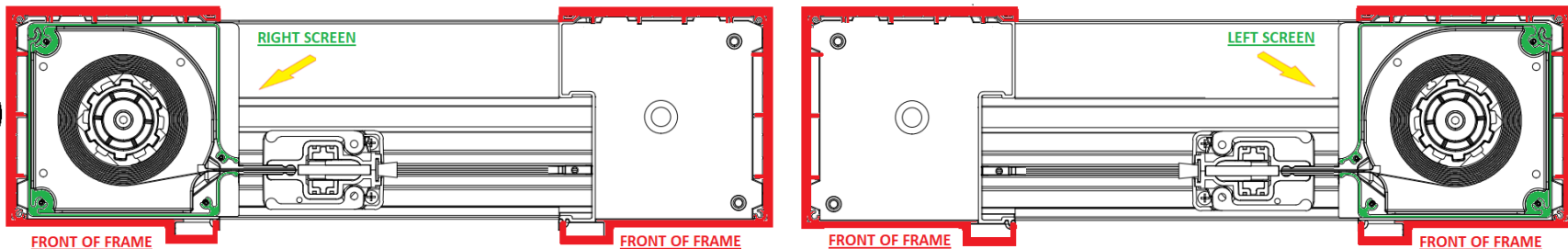
! Call 604-299-4426, or email support@wizardscreens.com prior to starting if you have any questions

FRONT VIEW



Spray
tracks *only*
with dry
silicone.

AERIAL VIEW



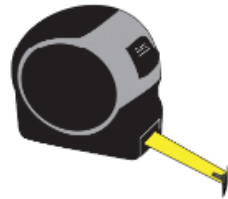
FIRST
Confirm the frame is
**plumb, level, straight,
and square.**
Adjust where necessary if
possible.

REQUIRED

Level



Tape Measure



Pencil



Shims



Flat Pry Bar



Hacksaw



9/64 and 1/8
Drill Bits



#1 and #2
Robertson
Driver Bits



Dry Silicone
Spray



2-way Laser Level Kit



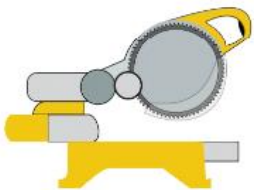
Filer



Utility Knife



Chop Saw



Drill



Step Ladder



Vacuum



Small
Countersink Bit



RECOMMENDED

Laser Distance Measure



1. Remove black spline



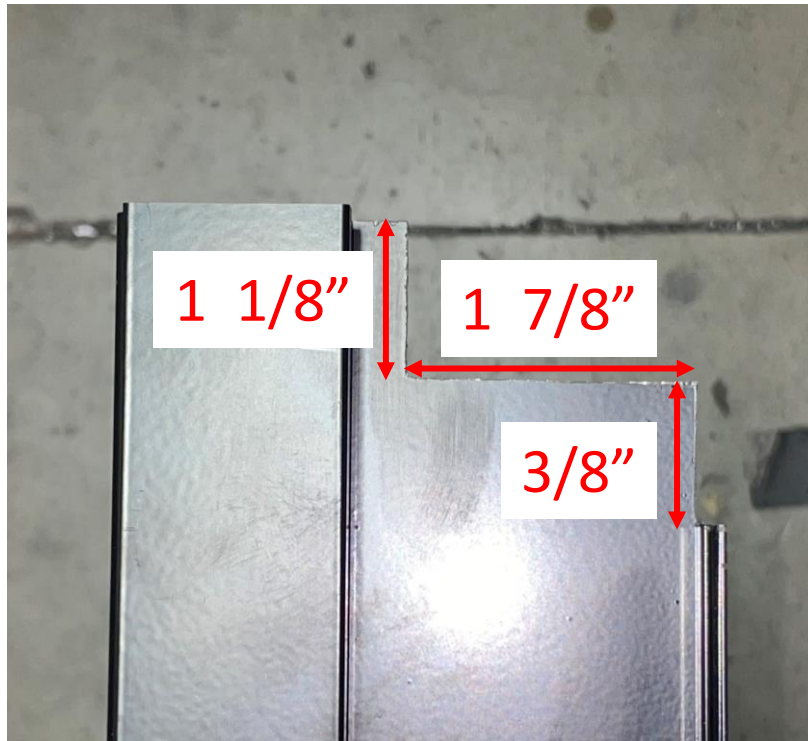
2. Remove temporary sill cover.



3. Carefully remove temporary jamb fillers.



1. Notch top of jamb filler accordingly.



2. Install jamb filler.

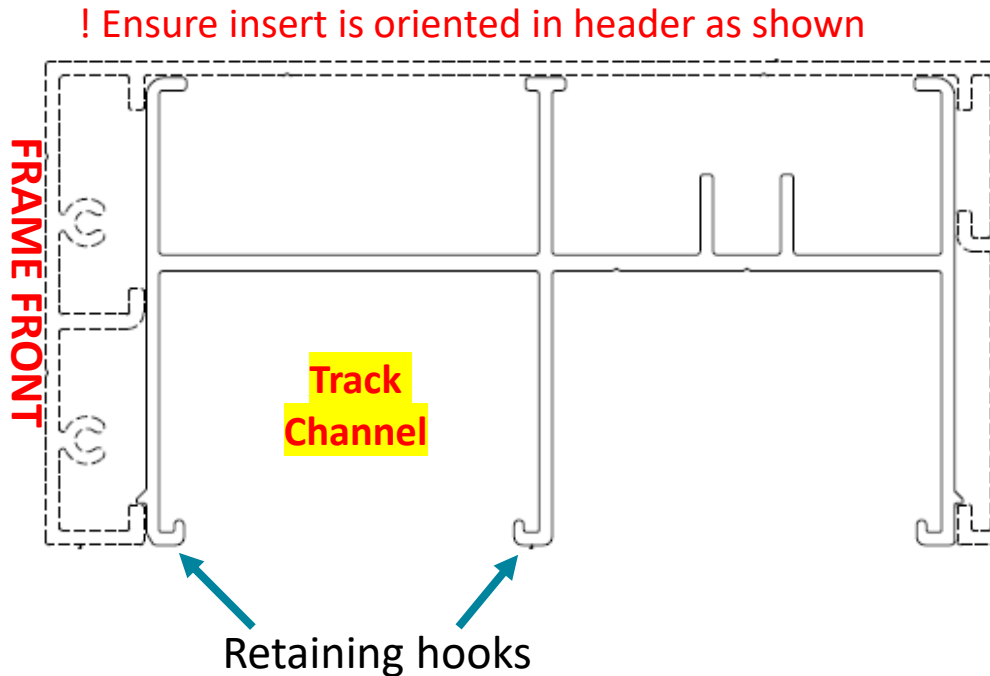


1. Install screen unit.
See pg 2 for orientation.



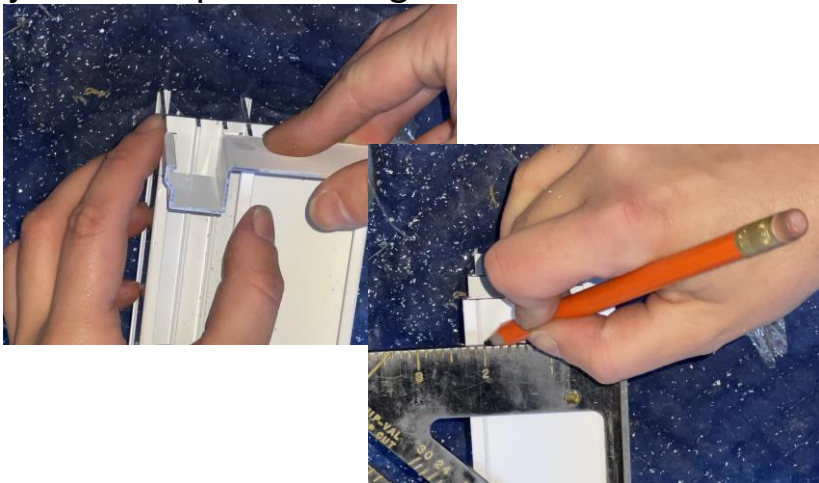
2. Release brake using
supplied **RED** wedge.



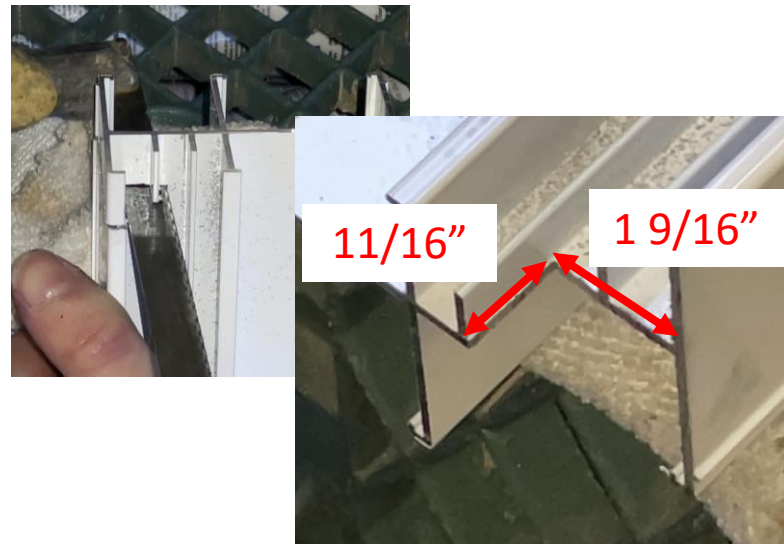


Header insert length will be **1/8" shy**. This means the housing will be removable without having to remove the header insert.

1. On the receiver end of **header insert**, trace jamb filler profile using cut-off.



2. Cut the header insert to traced marks.



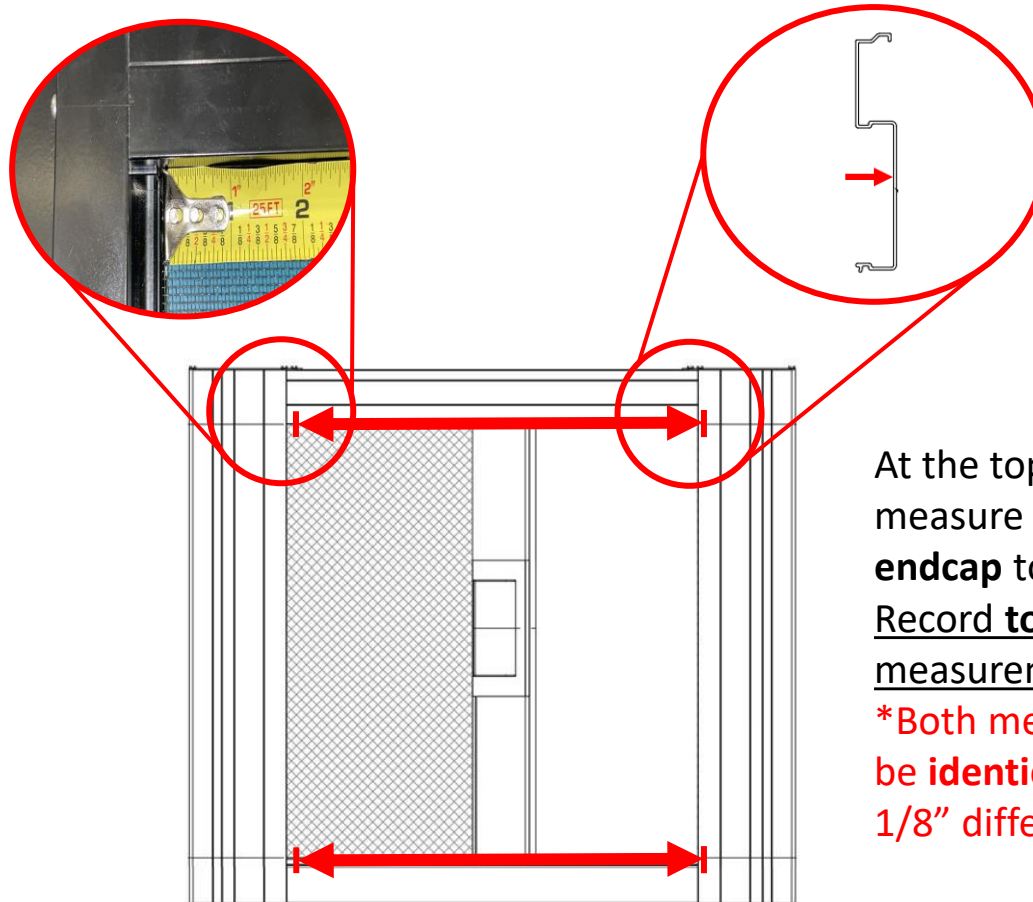
3. Attach header insert.



* Ensure **track channel** is on the correct side where screen will run!



Laser Distance Measure



At the top *and* bottom,
measure from **housing
endcap** to **jamb filler indent**.
Record **top** and **bottom**
measurements.

**Both measurements should
be **identical**. No more than
1/8" difference.*

*****FIRST, push header insert *fully against*
housing, which must not lean out of jamb.
Do not accidentally measure too short.*****

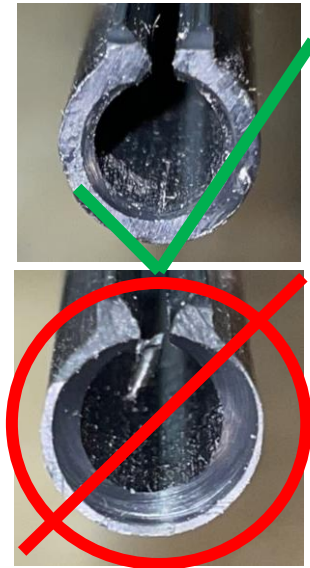
Lower track:

1. Flush lower track components at one end, track runner against latch.
2. Cut lower track to recorded **bottom** measurement.
3. Cut lower track runner **1/8" shorter** to accommodate **endcap spigot**.

Upper track:

1. Flush upper track components at one end, track runner against latch. (First see "Track Limiter" page for track wings prep.)
2. Cut upper track to recorded **top** measurement.

DO NOT CUT TRACKS AND RUNNERS TOO SHORT



Prepare track runner entry end:

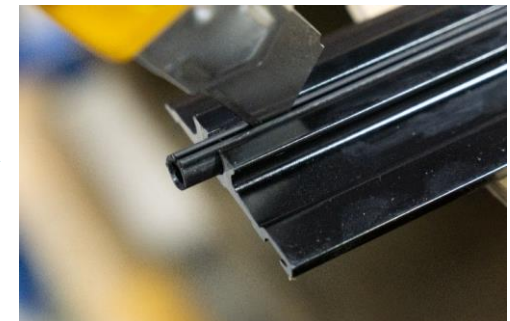
Slightly counter-sink.



Barely trim the corners off.



Deburr and clear debris.



1. Ensure the grooves are free of dirt to allow lower track to fully interlock.



NO DIRT!

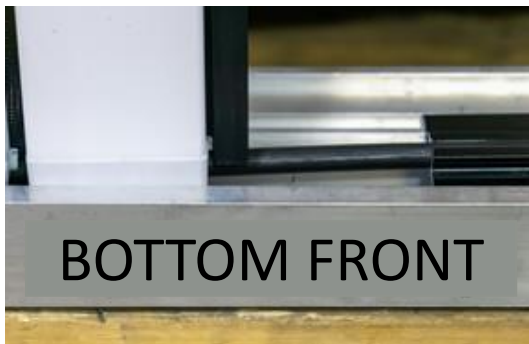
2. Extend track runner, lift pull bar.



3. Slide track runner onto mesh, against housing endcap.



4. Lower pull bar.



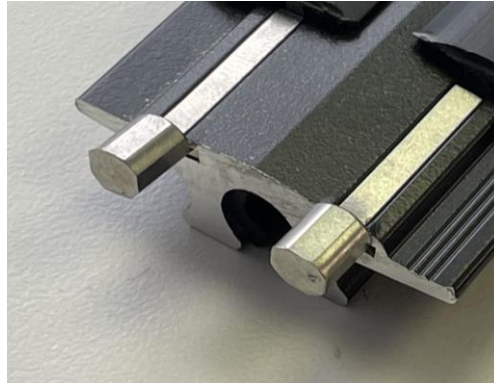
5. Feed track through pullbar endcap, pushing fully against housing – **no gaps**.



6. Interlock track with sill and fit in retaining spline.



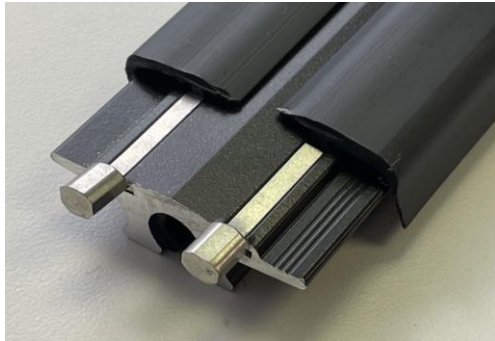
1. Insert track limiters into upper track wing slots on housing end **fully**.



! If track limiter is *not* fully inserted, screw head may interfere

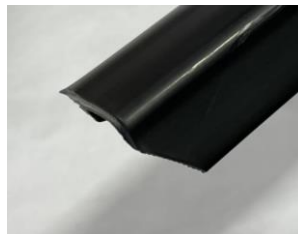
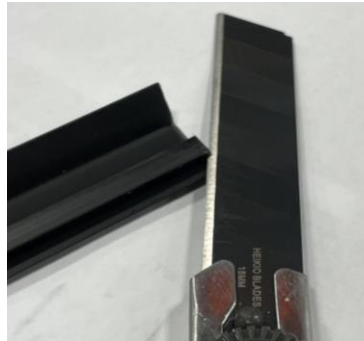


2a. Butt wings against



2b. Cut off insert part the length of track limiter.

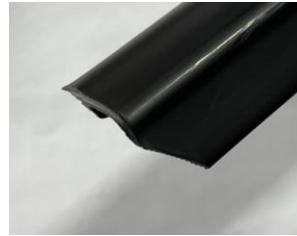
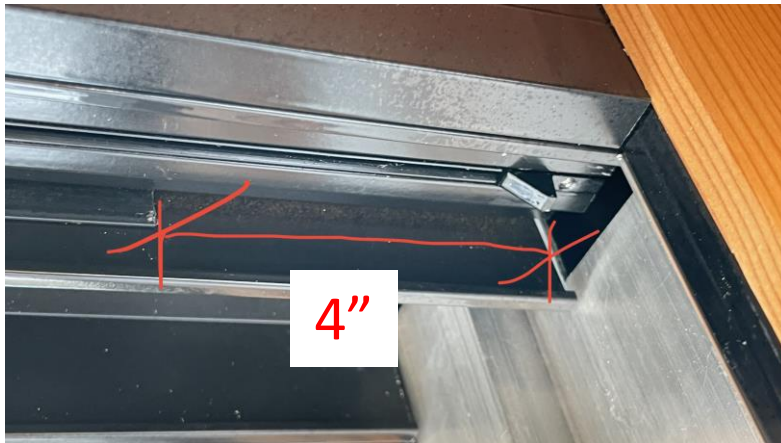
OR



If cutting **wings** with scissors, cut angle off corner

RECOMMENDED

1. At receiver end, cut **track wings** 4" short. This allows track to more easily pass above jamb filler when installing.



If cutting **wings** with scissors, cut angle off corner

2. Insert the upper track at angle into the jamb. Ensure track floats freely in track channel. Move to back of jamb.



OPTIONAL

To more easily install the upper track, you may *temporarily remove* the housing after you have recorded the measurements (see step "Record Track Measurements"). After you have inserted the track, put housing back in. You will *not* have to remove the header insert as there is a 1/8" gap, allowing you to tilt housing in. This would have to be done *before* the lower track is installed.

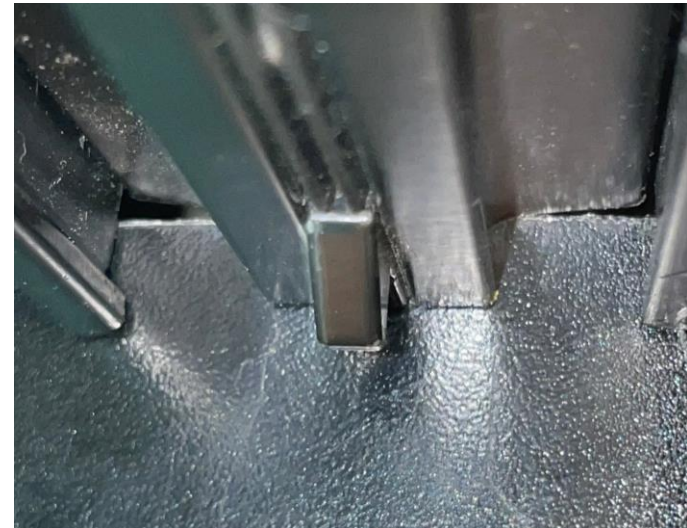
3. Feed track runner along zipper, then track through pullbar endcap, pushing fully against housing endcap – **no gap**.



4. Ensure track floats freely.



5. Ensure jamb filler is *not* notched too low & **no gap** between track and jamb filler.



TEST THE UNIT



Check the following:	✓ or ✗
Frame is Plumb, Level, Square, and not twisted?	
Tracks are level, parallel, and plumb side-to-side and front-to-back?	
Housing on the ground AND plumb?	
Housing mesh slot has not been squeezed during the install?	
Tracks are fully against the housing?	
The track limiters are on the entry end of the upper track?	
Tracks are fully against the housing?	
Track runners are not cut too short?	
Zipper are following through the housing endcap keyholes?	
Track runners have been sprayed inside with dry silicone ?	

! If any problems are not resolved, call 604-299-4426, or email support@wizardscreens.com **before leaving site!**

If necessary, review **The Horizon Troubleshoot Manual**