



Installation

Product tech. support:

support@wizardscreens.com 1-888-949-3667

First things

- **READ INSTRUCTIONS BEFORE PROCEEDING.**
- It is recommended to install screens after door installation.
- If concealed, screen unit must be removable and serviceable.

Unpackaging

- Screen should remain packaged until installation.
- Closely inspect product for damage.
- If there is damage, report to Wizard Screens with pictures immediately.

Preparation

- Ensure zippers are in housing endcap slots. **Figure 1**
- Do *not* remove 2 small track supports at top and bottom of pull bar *until* attaching the tracks. **Figure 2**
- Brakes must be *disengaged* when operating. Keep rivet pin in brake handle during installation. **Figure 3**



Figure 1

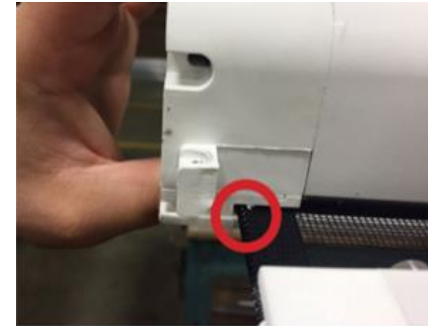


Figure 2



Figure 3



#8 Robertson
Screwdriver



9/64 and 1/8
Drill Bits



#1 and #2
Robertson Driver
Bits



Dry Silicone
Spray



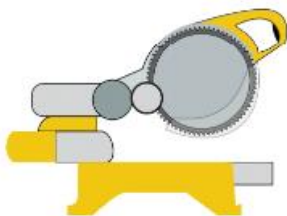
Small
Countersink Bit



Utility Knife



Chop Saw



Drill



Step Ladder



Vacuum



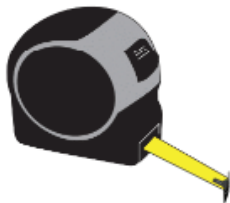
Rubber Mallet



Level



Tape Measure



Pencil



Shims



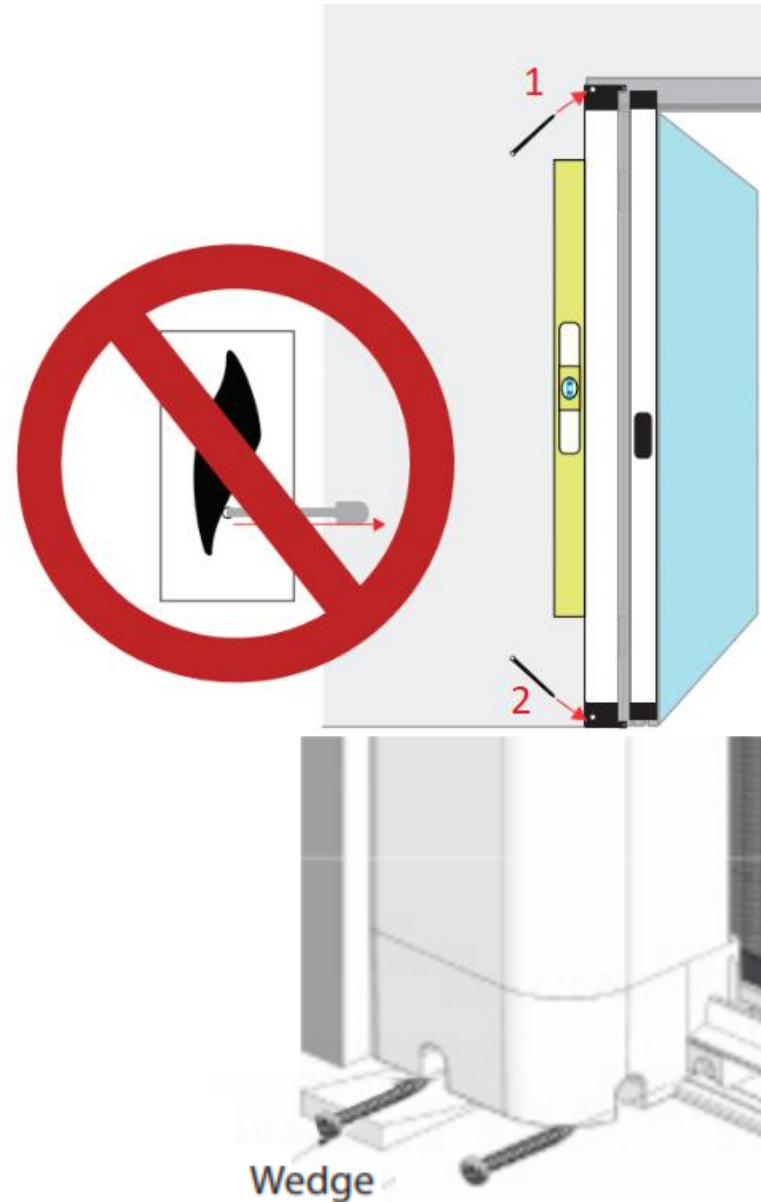
OPTIONAL
2-way Laser Level Kit



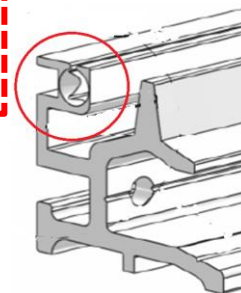
1. Maneuver housing into position and ensure plumb.
2. Mark endcap screw holes, move housing, and predrill.
3. Affix housing with provided mounting screws at top.
4. For bottom, repeat steps 2 & 3.
Ensure **plumb** and **free of twist**. Use shims if necessary.

*NOTE: *Wait* to drive screws home until *after* tracks are fastened.

*Brake rivet *must* remain in handle until the very end of installation.



1. On **zipper entry ends** of both tracks, countersink zipper path and de-burr.



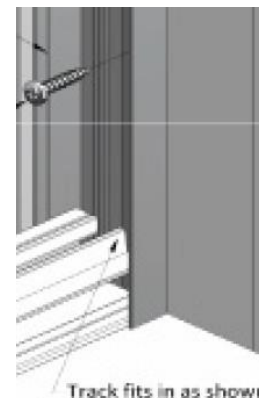
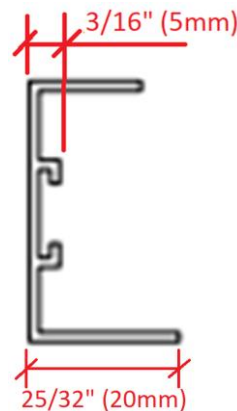
2. Mallet track guide.



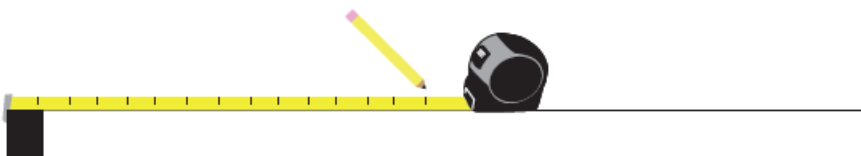
3. Measure from **housing** to **opposite end** at the bottom, middle, and top. Record *smallest* measurement and mark on floor.

4. Calculate final measurement:

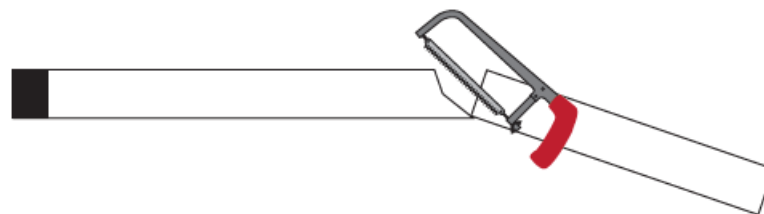
- 1) Inside/Reveal: Subtract **3/16"**.
- 2) Surface: Add **25/32"**, then subtract **3/16"**.
- 3) Alternatively, position receiver at bottom mark and mark at magnet holder.



5. *

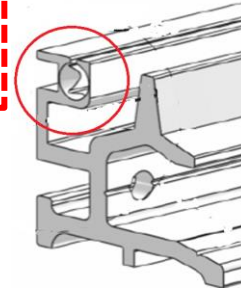


6. Cut upper and bottom tracks to **identical length**. *



7. Pre-drill 1/8" holes @ 16" O/C into each track.

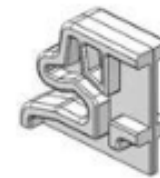
1. On **zipper entry ends** of both tracks, countersink zipper path and de-burr.



2. Mallet track guide.

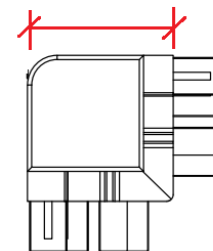
3. Determine measurement from **housing to joint or end of corner** and record.

Straight Joiner



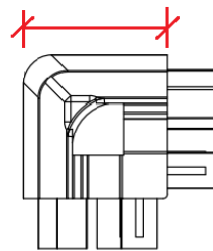
Internal Corner

1 3/8" (35mm)



External Corner

1 3/8" (35mm)

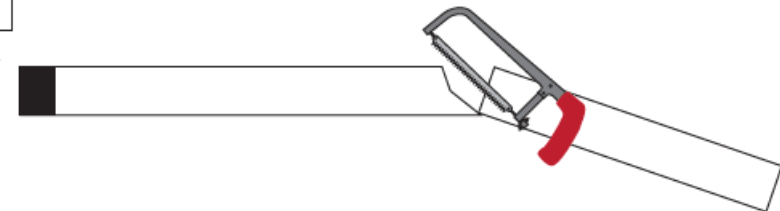


4. Calculate final measurement

- 1) **Straight:** Subtract **1/16"** to accommodate track joiner.
- 2) **Corner:** Subtract **1 3/8"** to accommodate corner joiner.



6. Cut upper and lower tracks to **identical length**.



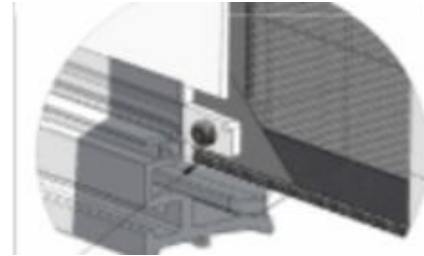
7. Repeat on other side.

8. Pre-drill 1/8" holes @ 16" O/C into each track.



1. Remove lower track support. Feed lower track through the pull bar endcap and feed zipper into the track guide's zipper entry. Push track firm against the housing.

Do not damage the zipper and mesh.



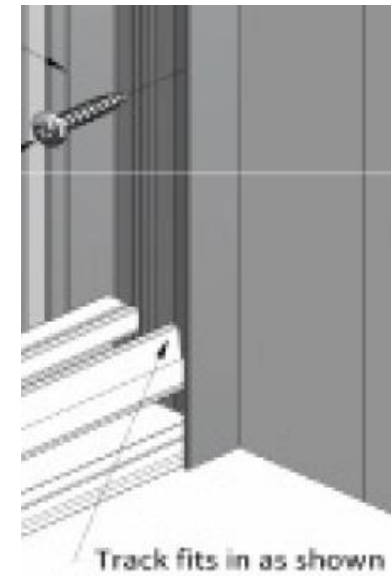
2. Fasten lower track to housing endcap nub. Fasten level. Shim if necessary.
3. Repeat steps 1 & 2 for upper track.
4. Bring the pull-bar to the nearest pre-drilled hole. Fasten upper track **1/8"** above pull bar. Fully retract, then draw to next hole. Repeat process until complete. This step ensures parallel and that zipper aligns well inside housing.
5. Singles: Position receiver against end of tracks and affix to surface (Inside mount shown).

CHECK:

Singles: Receiver and housing are **plumb** both ways.

Doubles: Housing and straight joiners/corner joiners are vertically aligned **plumb** both ways.

Tracks level, parallel, and free of twist.

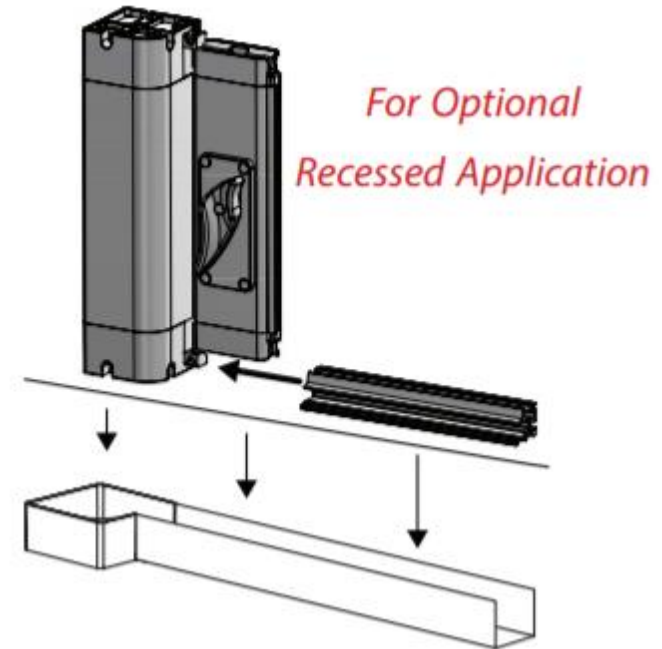




1. Attach cup to recess channel.
2. Position channel level. Shim if necessary.
3. Prep and cut tracks.
4. Fasten lower track to housing endcap nub.
5. Place into the channel (may require 2 people).
6. Abide by standard steps otherwise where applicable.

*NOTE: Lower housing endcap and lower track does *not* require affixing.

****IMPORTANT NOTE: For exterior applications, especially if area is unprotected, note that recess channel and tracks are not weatherproof. Water Egress is the responsibility of the general contractor or builder.**



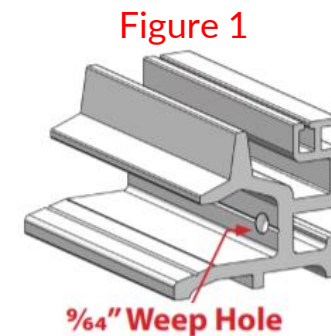


Concealed Applications

- Screen housing and tracks must be easily removable in the event the screen requires servicing. Millwork must be removable where access is required.

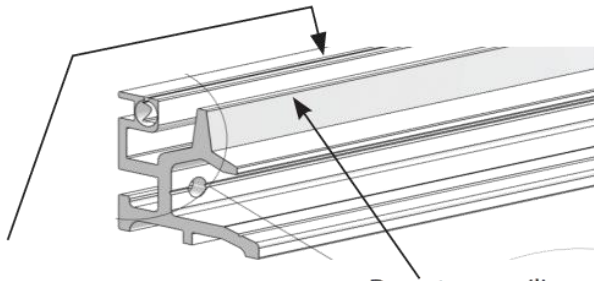
Exterior Applications

- ****IMPORTANT NOTE:** For exterior applications, especially if area is unprotected, please note that recess channel and tracks are not weatherproof (see previous page). Water Egress is the responsibility of the general contractor or builder.
- Water drainage requirements:
 - Drill weep-holes into the tracks **Figure 1**.
 - It is good practice to dab pilot holes in surface with waterproof silicone before fastening with screws (surface mounted)



Educate the homeowner:

1. Twist the brake handle **fully** when operating the screen.
2. Dirt must not be allowed to build up in tracks. Keep tracks clean with brush, cloth, or vacuum. Mesh may be vacuumed with upholstery brush.



3. Spray Silicone into the opening that the mesh slides in along the entire track. Do not spray silicone where the brake is applied.
Use **only dry silicone**. Frequency dependent upon season and location. Clean tracks first.



4. Do *not* use corrosive cleaners.
5. Retract when not in use.