



4-Sided Frame

100mm DOUBLE Screen Installation

Minimum **2** installers required

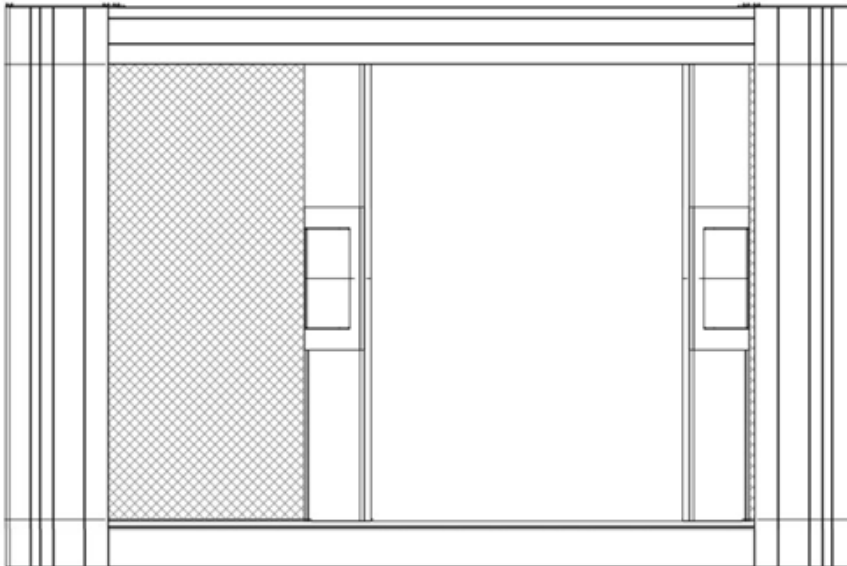
THE
HORIZON

Integrated System

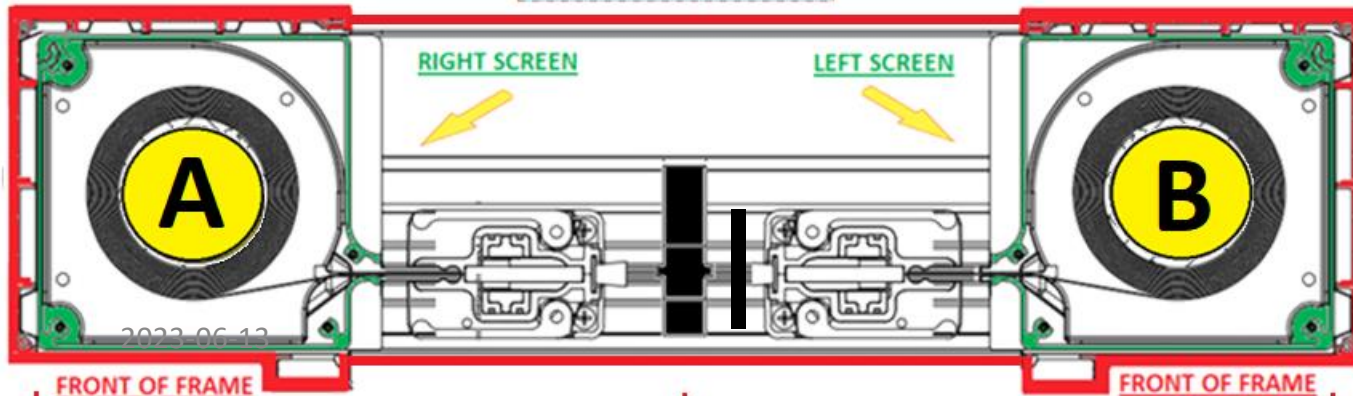
Spray
tracks *only*
with dry
silicone.



FRONT VIEW



AERIAL VIEW



FIRST
Confirm the frame is
**plumb, level, straight,
and square.**
Adjust where necessary if
possible.

REQUIRED

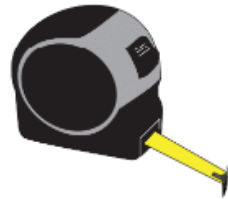
THE
HORIZON

Integrated System

Level



Tape Measure



Pencil



Shims



Flat Pry Bar



9/64 and 1/8
Drill Bits



#1 and #2
Robertson
Driver Bits



Dry Silicone
Spray



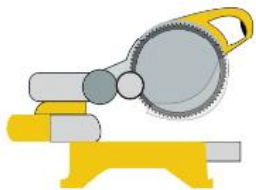
2-way Laser Level Kit



Utility Knife



Chop Saw



Drill



Step Ladder



Vacuum



Small
Countersink Bit



RECOMMENDED

Laser Distance Measure



1. Remove black spline



2. Remove temporary sill cover.



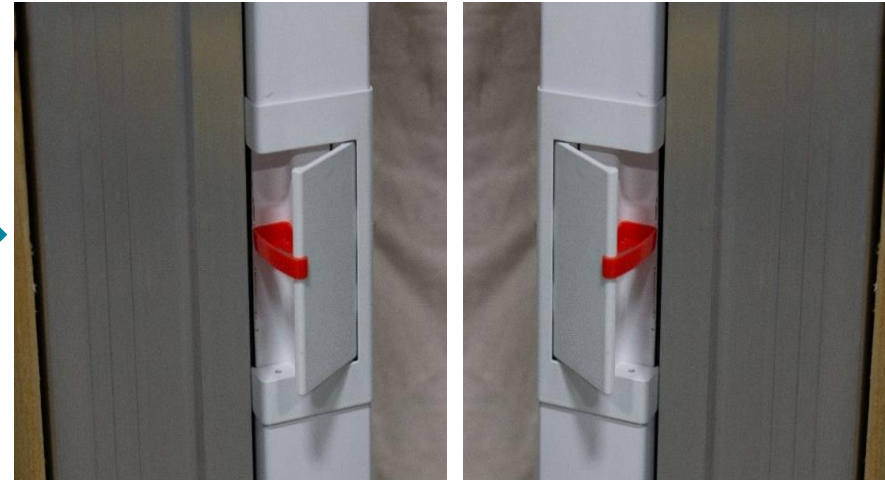
3. Carefully remove temporary jamb fillers.



1. Install screen units. See “**Considerations**” for orientation.



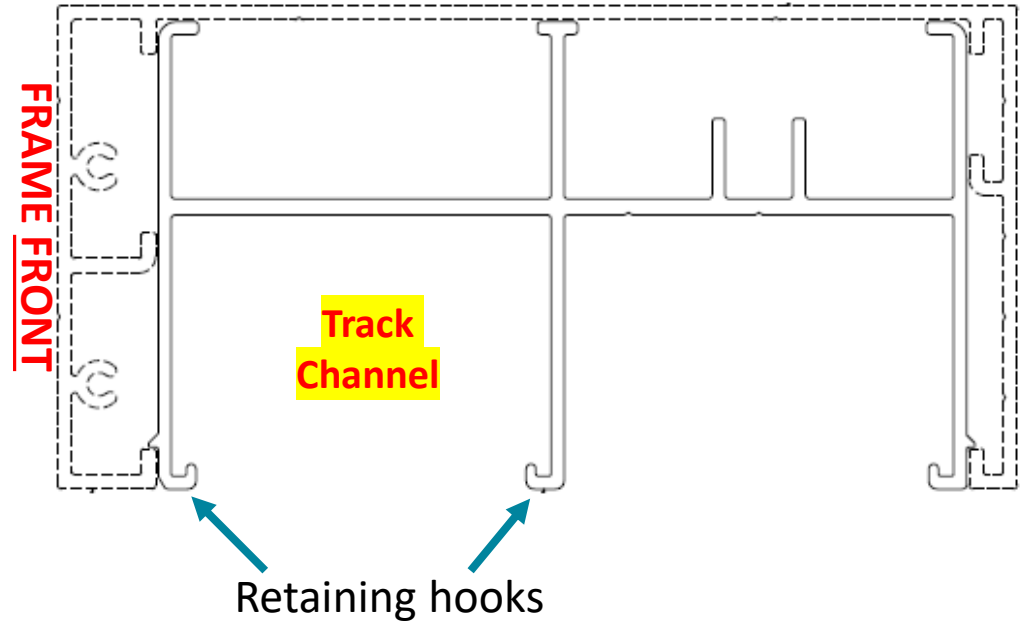
2. Release brakes using supplied **RED** wedges.



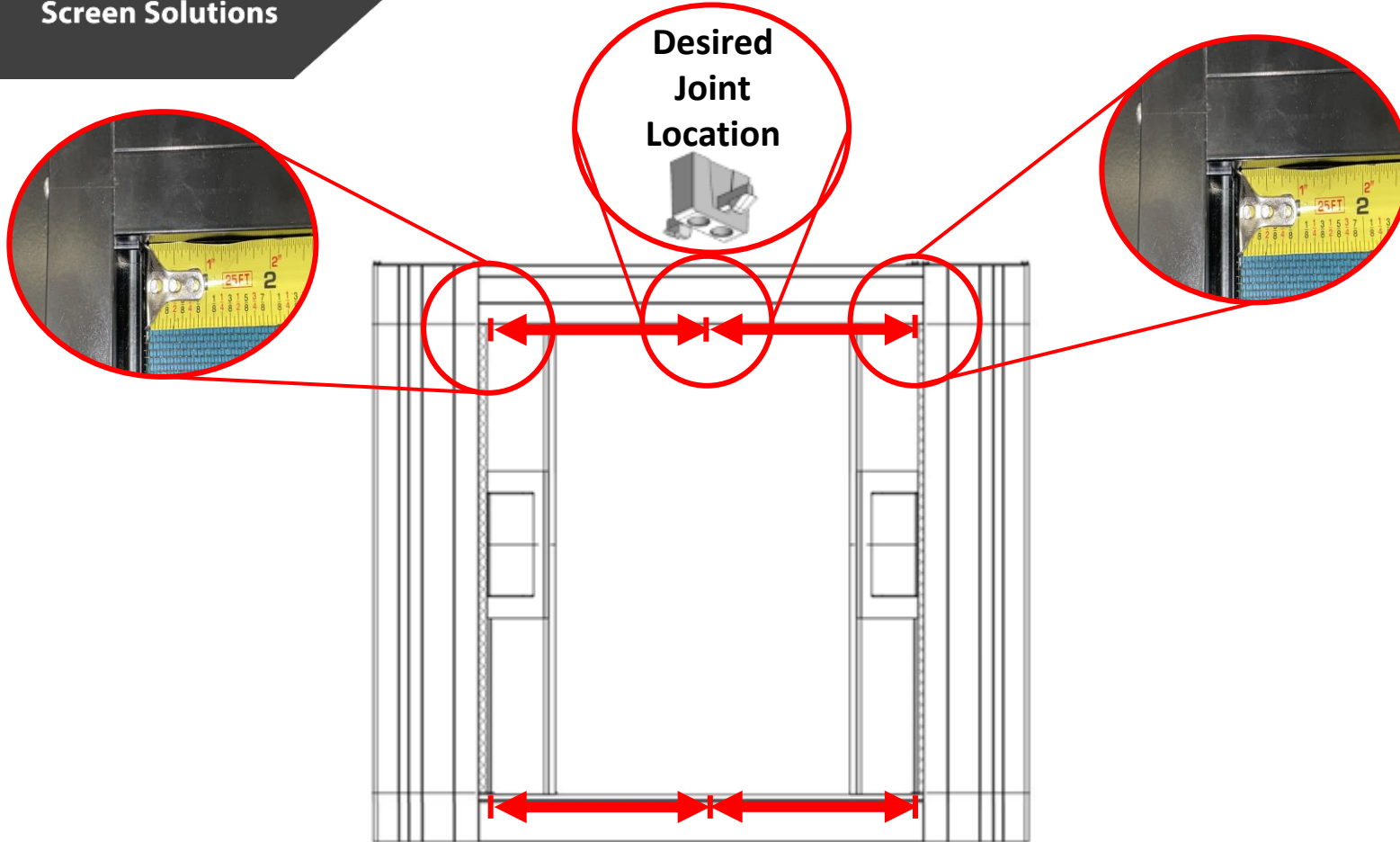
1. Attach header inserts



! Ensure insert is oriented in header as shown



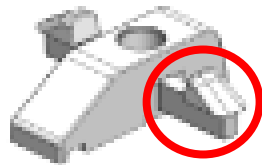
Total header insert length will be **1/8" shy**.
This means the housing will be removable
without having to remove the header
insert. Simply lift unit and tilt bottom out.



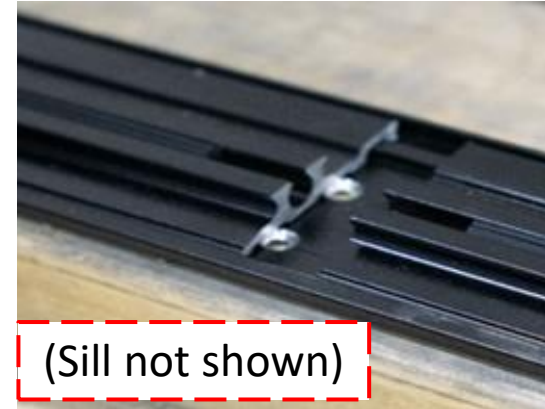
*****FIRST, push header insert *fully against* housing, which must not lean out of jamb. Do not accidentally measure too short.*****

Lower track:

1. Measure at **bottom** between **housing endcaps** and **desired joint location**. Record lengths.
2. *Subtract* another **5/16"** (*half* of lower track joiner thickness) from each length and cut lower tracks.
3. Cut lower track runner to fit between **lower endcap spigot** and **lower track joiner latch**.

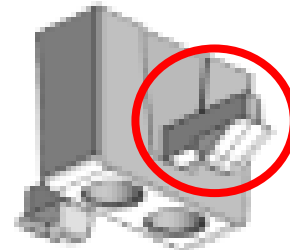


ALTERNATIVELY: Temporarily affix track joiners and measure to those.

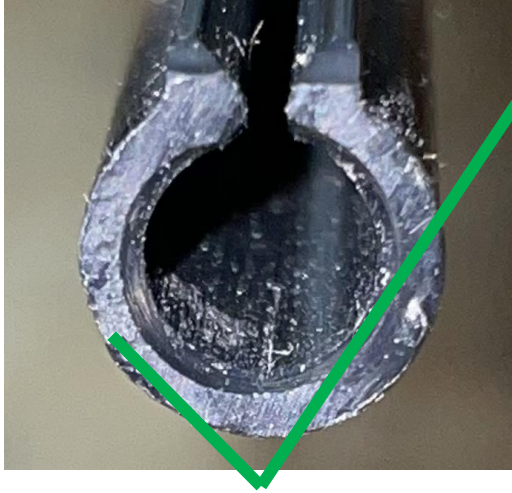


Upper track:

1. Repeat above steps for **upper**.
2. Cut upper track runner to fit between **upper endcap** and **upper track joiner latch**.



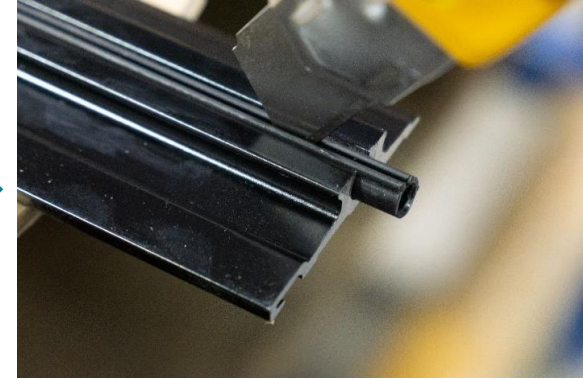
DO NOT CUT TRACKS AND RUNNERS TOO SHORT



Slightly counter-sink.

Barely trim the corners off.

Deburr and clear debris.



1. Ensure the grooves are free of dirt to allow lower track to fully interlock.



NO DIRT!

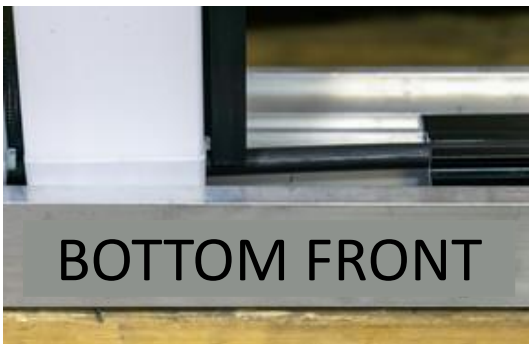
2. Extend track runner, lift pull bar.



3. Slide track runner onto mesh, against housing endcap.



4. Lower pull bar.



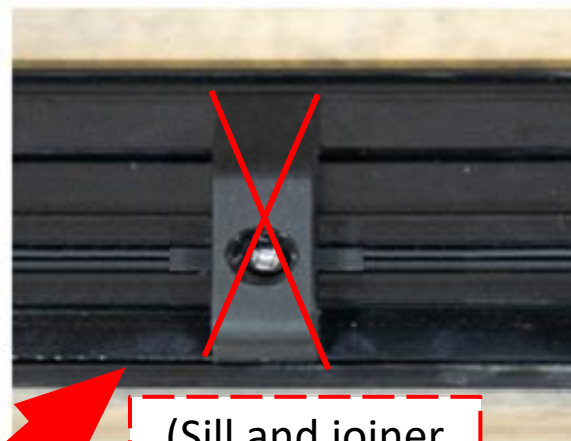
5. Feed track through pullbar endcap, pushing fully against housing – **no gaps**.



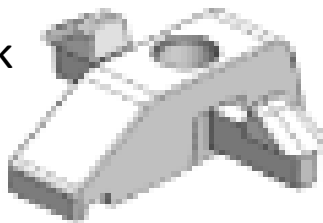
6. Interlock track with sill and fit in retaining spline.



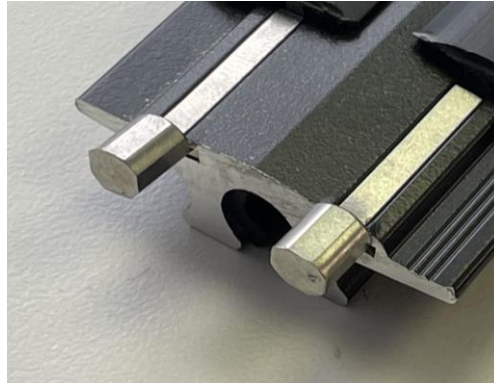
6. Attach lower track joiner



Lower track
joiner with
latches



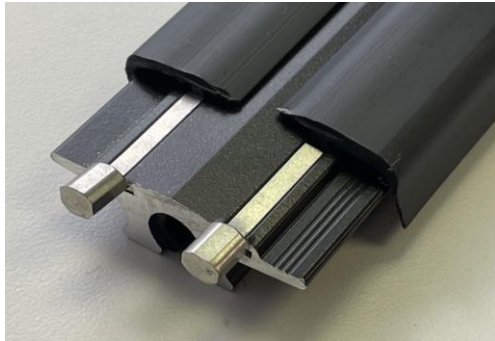
1. Insert track limiters into upper track wing slots on housing end **fully**.



! If track limiter is *not* fully inserted, screw head may interfere

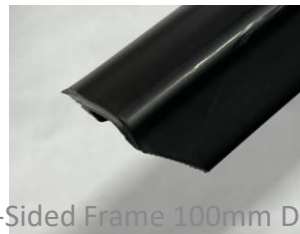
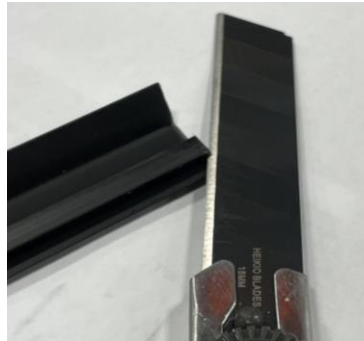


2a. Butt wings against



2b. Cut off insert part the length of track limiter.

OR



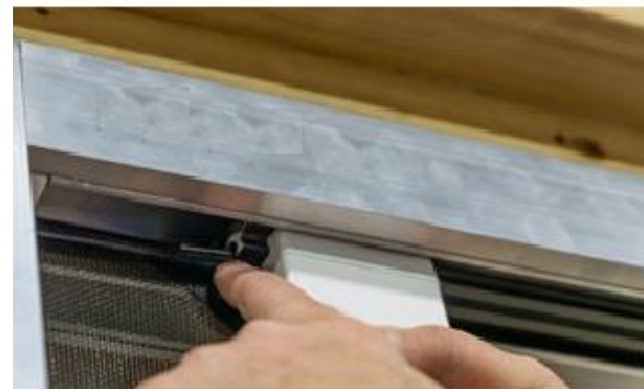
If cutting **wings** with scissors, cut angle off corner

DO NOT CUT TOWARDS YOURSELF!!!

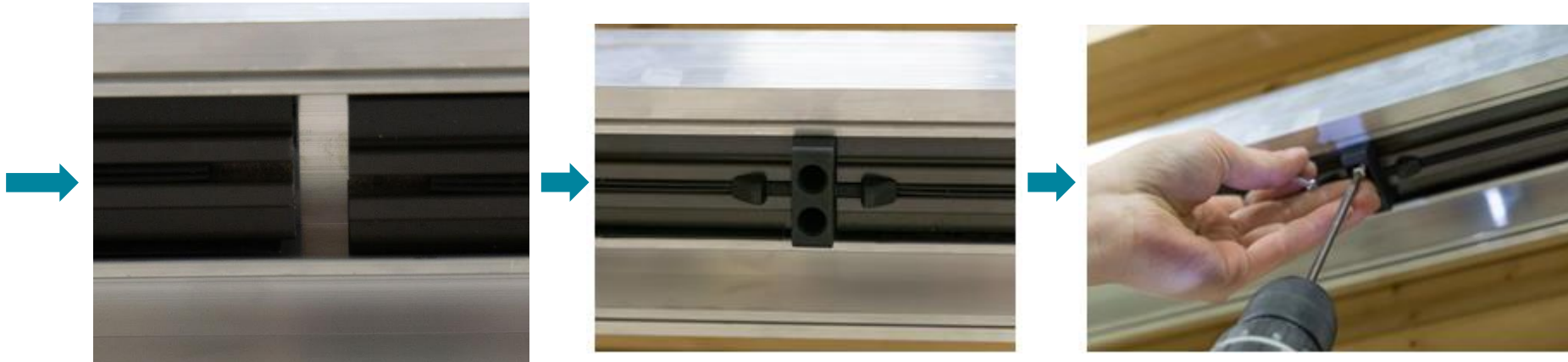
1. Insert upper tracks into the header insert track channel and release them. Tracks will initially overlap.



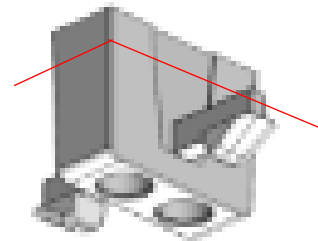
2. Feed track runner along zipper, then track through pullbar endcap, pushing fully against housing – **no gaps**. Repeat on other side.



3. Ensure track floats freely and that bottom of track is even with bottom of header insert.



!IMPORTANT: It *may* be necessary to cut the *top* of the upper track joiner **shorter**. Test functionality first.



This will be **magnet**,
not mohair.



TEST THE UNIT



Check the following:	✓ or ✗
Frame is Plumb, Level, Square, and not twisted?	
Tracks are level, parallel, and plumb side-to-side and front-to-back?	
Housing on the ground AND plumb?	
Housing mesh slot has not been squeezed during the install?	
Tracks are fully against the housing?	
The track limiters are on the entry end of the upper track?	
Tracks are fully against the housing?	
Track runners are not cut too short?	
Zipper are following through the housing endcap keyholes?	
Track runners have been sprayed inside with dry silicone ?	

! If any problems are not resolved, call 604-299-4426, or email support@wizardscreens.com **before leaving site!**

If necessary, review **The Horizon Troubleshoot Manual**