



3-Sided Frame

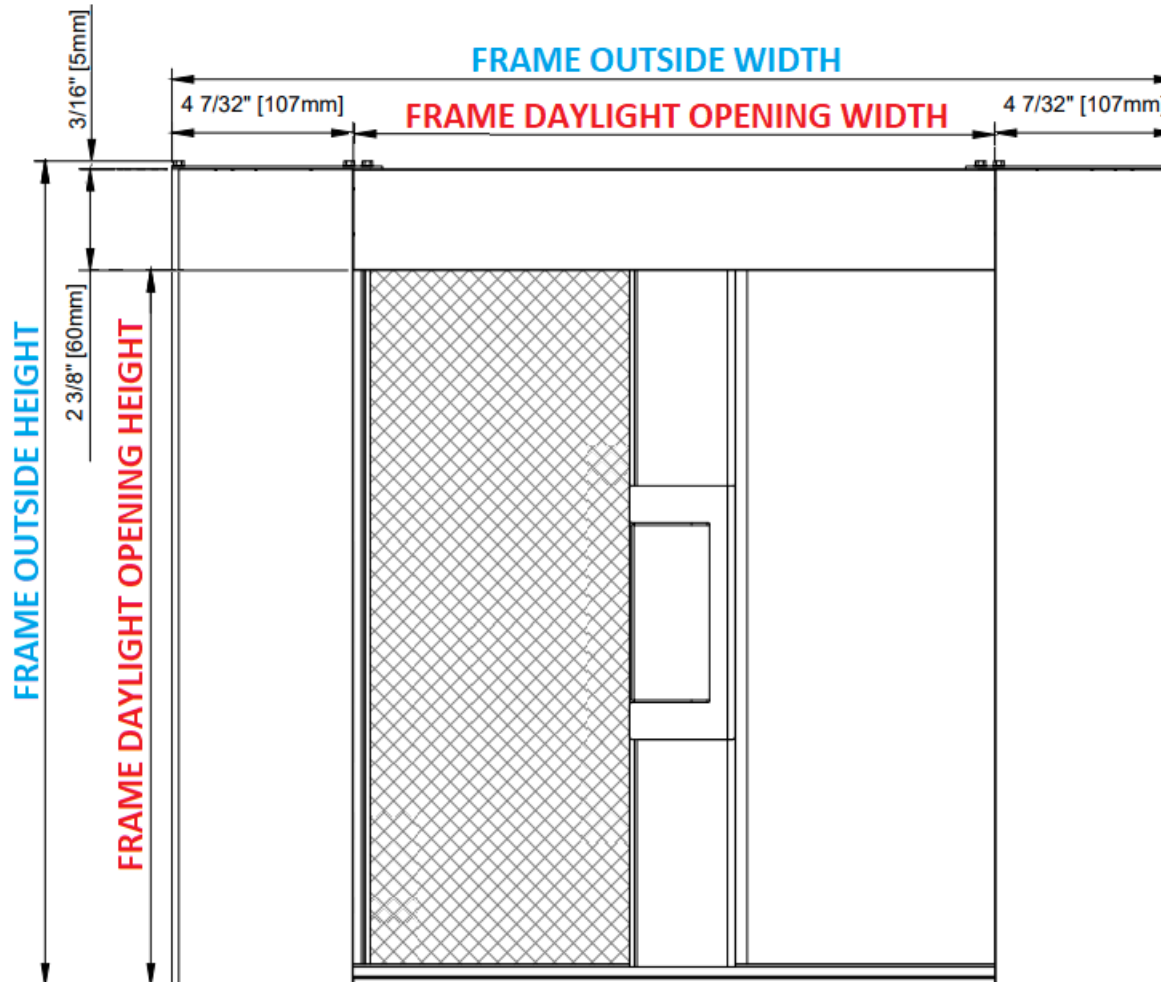
100mm SINGLE Screen Installation

Minimum 2 installers required

! Call 604-299-4426, or email support@wizardscreens.com prior to starting if you have any questions

THE
HORIZON

Integrated System



Spray
tracks *only*
with dry
silicone.

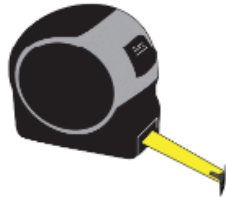
1. Confirm the frame is **plumb, level, straight, square, and free of twist**. Adjust where necessary if possible.
2. **Bottom of housing** must *not* be lower than **bottom of jamb**.
3. Lower track must be established **level and straight** as possible. *Otherwise:*
 - the screen may sag a little; *and/or*
 - the pull-bar may bind

REQUIRED

Level



Tape Measure



Pencil



Shims



Flat Pry Bar



1.5mm Hex Key



Hacksaw



9/64 and 1/8
Drill Bits



#1 and #2
Robertson
Driver Bits



Dry Silicone
Spray



2-way Laser Level Kit



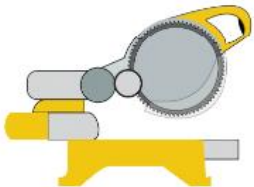
Filer



Utility Knife



Chop Saw



Drill



Step Ladder



Vacuum



Small
Countersink Bit



RECOMMENDED

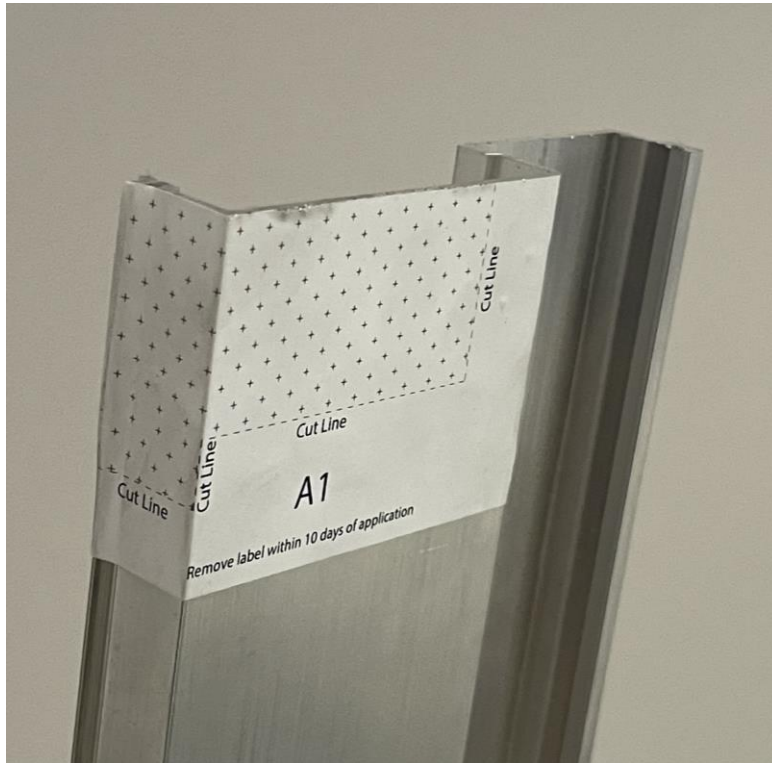
Laser Distance Measure



Carefully remove
temporary mill jamb fillers.



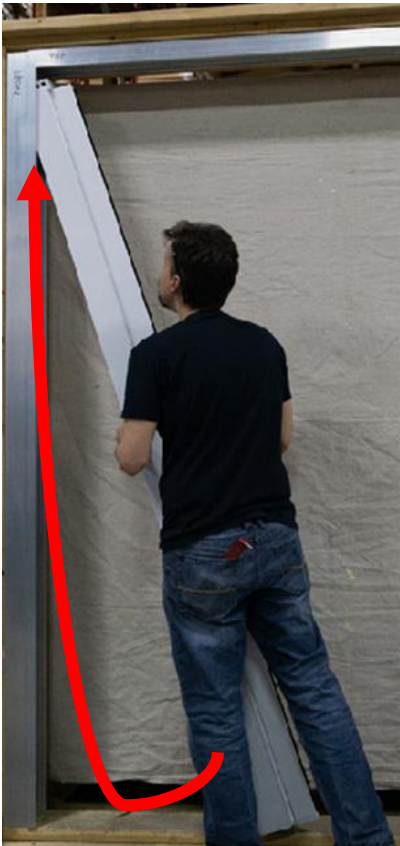
1. Apply label on *backside* of receiver.
Notch top of jamb filler along lines.



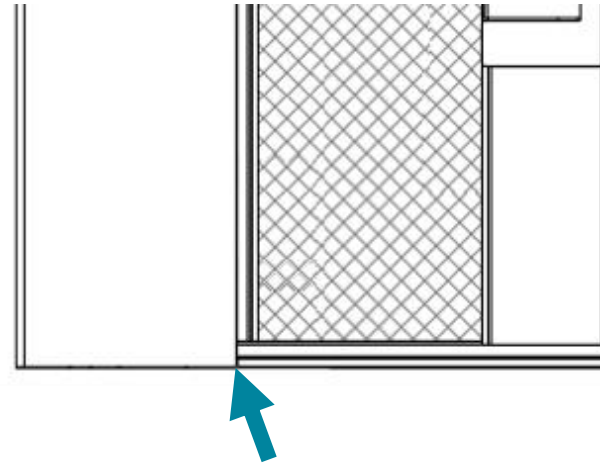
2. Install jamb filler.



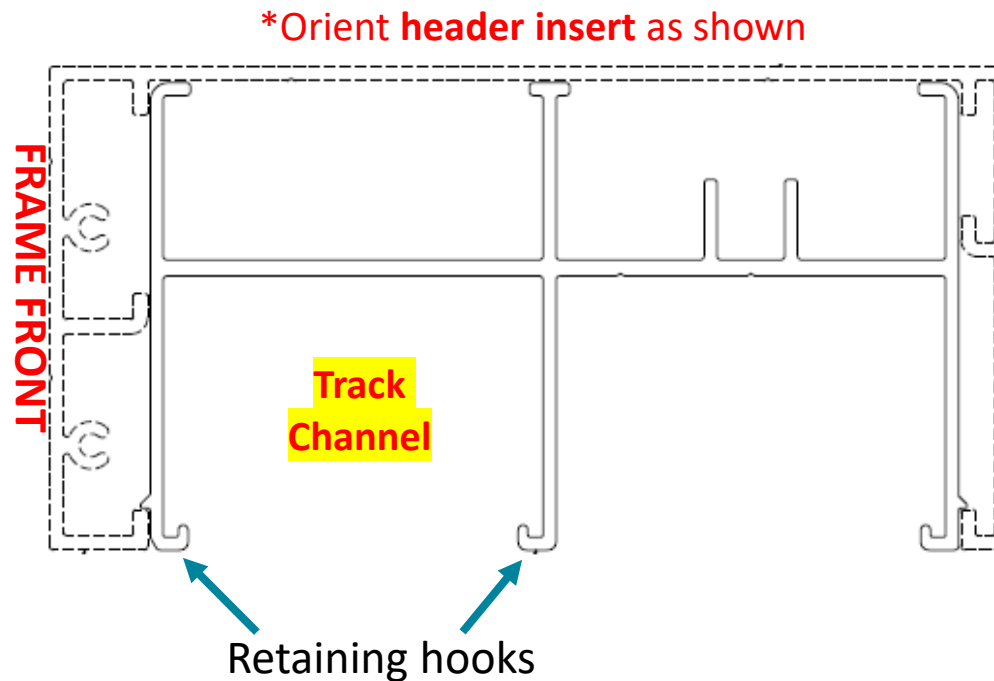
1. Install screen unit.
See pg 2 for orientation.



2. Release brake using
supplied **RED** wedge.

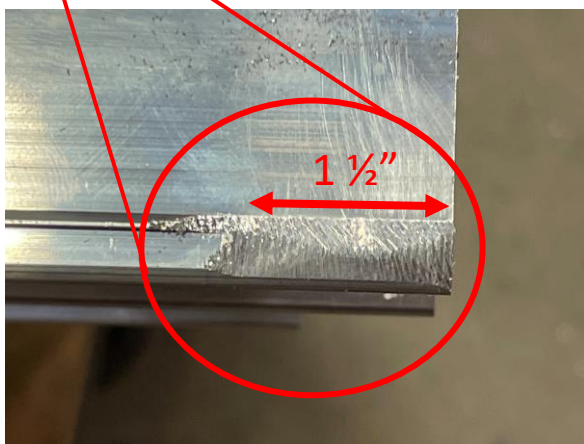
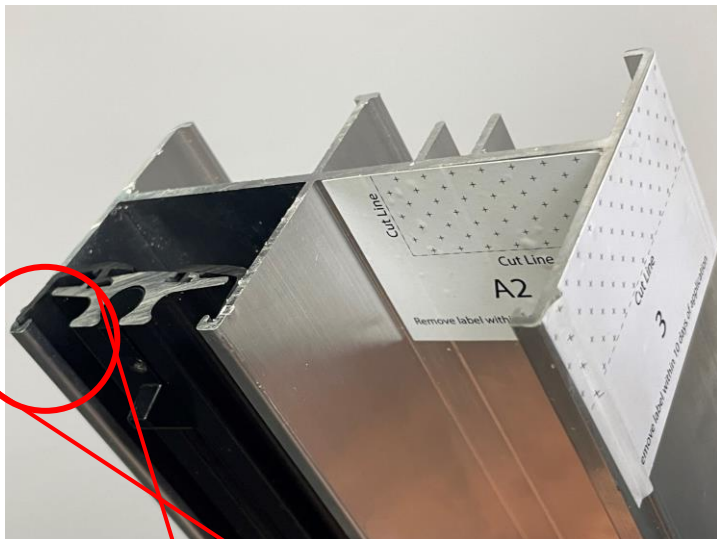


Housing and track *must* be
flush with bottom of jamb



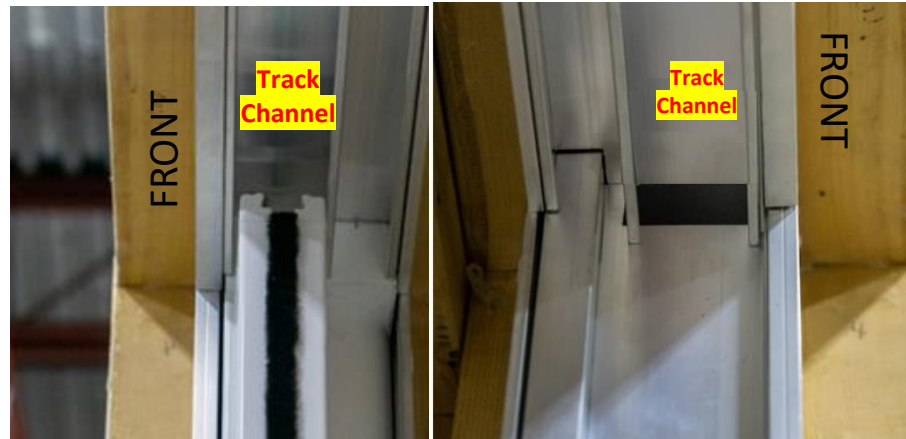
Header insert length will be **1/8"** shy. This means the housing will be removable without having to remove the header insert.

1. Apply labels and cut along lines.



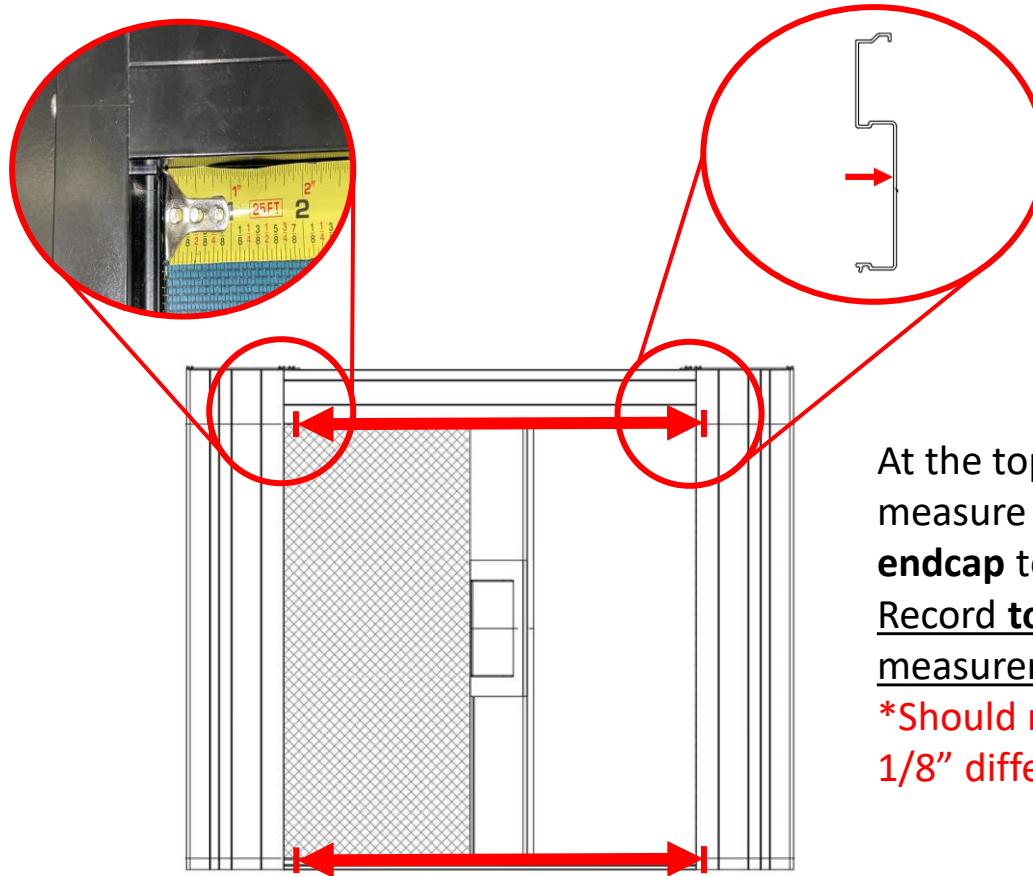
2. File flat **1 1/2"** external lip

Attach header insert.



*** Ensure track channel is correctly oriented where screen will run!**

Laser Distance Measure



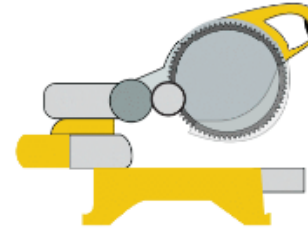
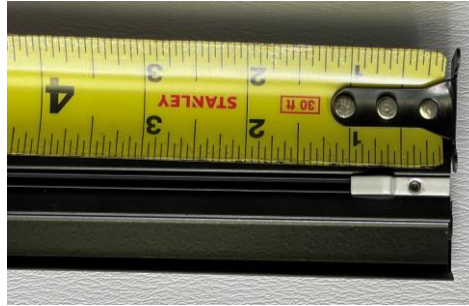
At the top *and* bottom,
measure from **housing
endcap** to **jamb filler indent**.
Record **top** and **bottom**
measurements.

**Should not be more than
1/8" difference.*

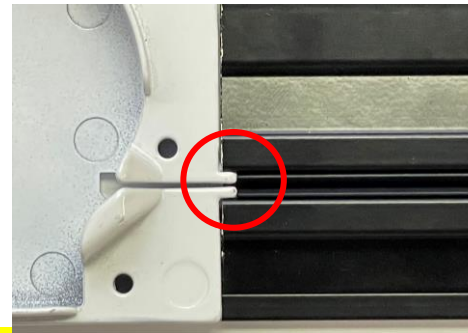
*****FIRST, push header insert *fully against*
housing, which must *not* lean out of jamb.
Do not accidentally measure too short.*****

Cut tracks:

1. Affix **latch**.
2. Measure and mark.
3. Push **track runner** against **latch**, then cut **track** to recorded measurement.
4. Repeat.
5. Cut extra 1/8" off **lower track runner**.



Lower



Entry end



DO NOT CUT TRACKS AND RUNNERS TOO SHORT

Prepare track runner entry end:

Slightly counter-sink.



Barely trim the corners off.



Deburr and clear debris.



Not applicable if completed during frame installation.

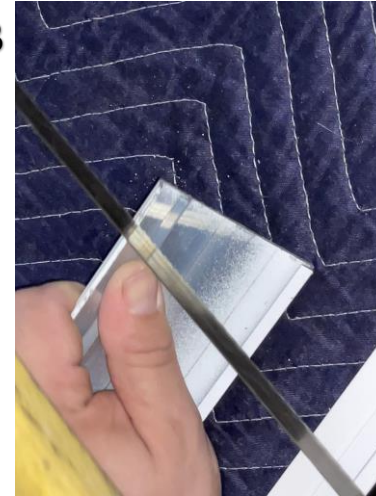
THE
HORIZON
Integrated System

Notch the receiver end of the lower track mount to fit.

A



B



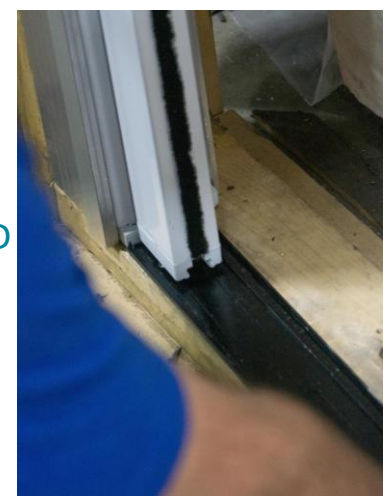
C



D



E

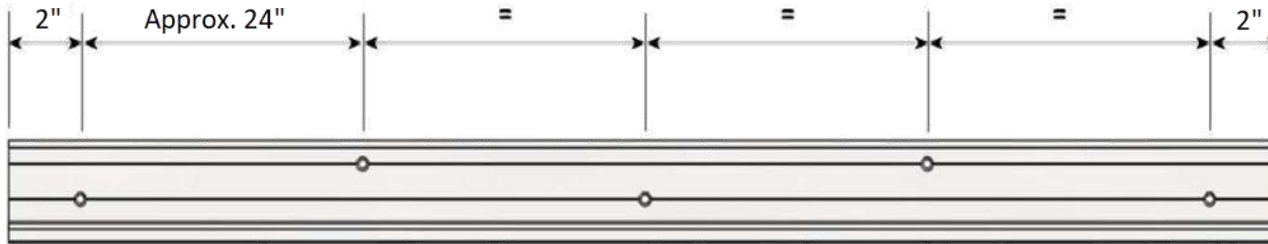


AND

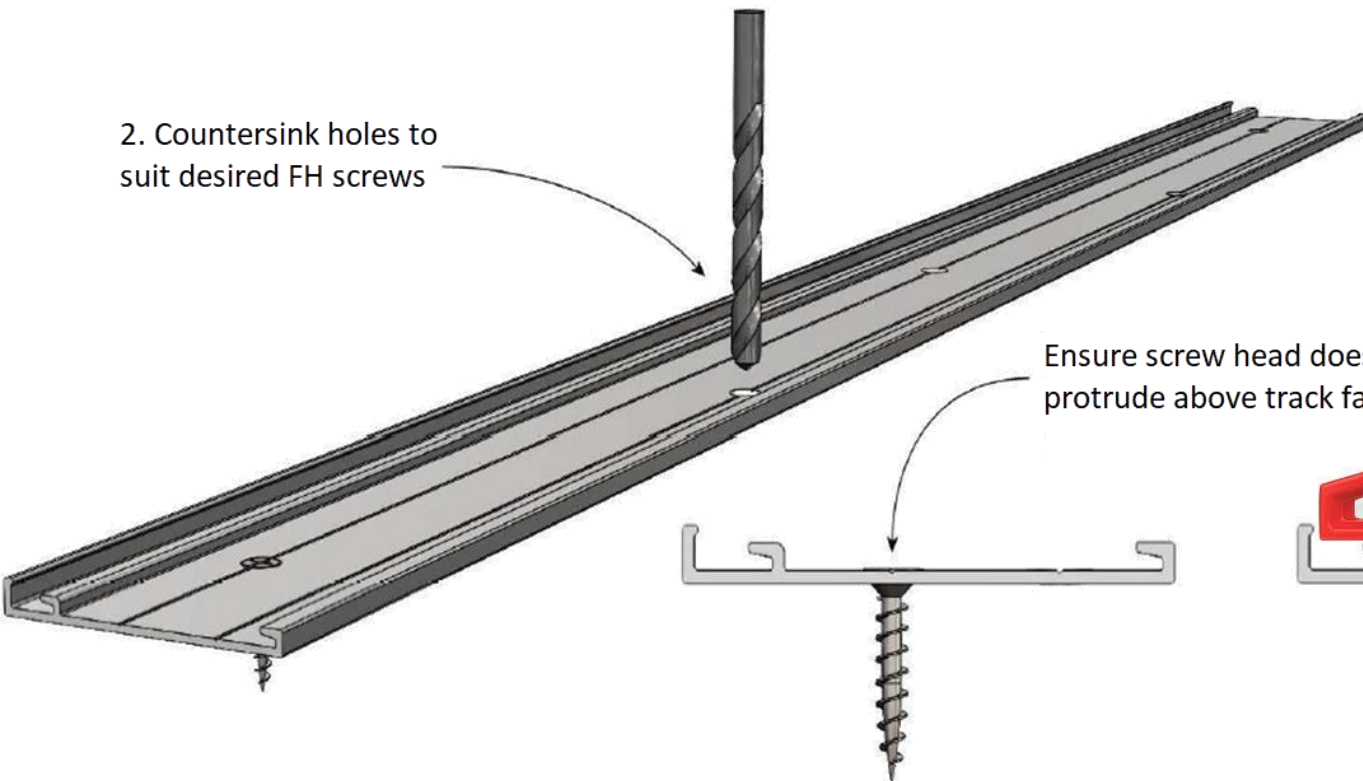
Not applicable if completed during frame installation.

THE
HORIZON
Integrated System

1. Predrill holes like shown or in pairs



2. Countersink holes to suit desired FH screws



Ensure screw head does not protrude above track face

Check level front-to-back. Shim if necessary.



1. Remove track cut-off.



2. Lift **pull-bar**. Slide **track runner** along **zipper**.



3. Feed **lower track** through **pull-bar**.



4. As you lay **track** down...



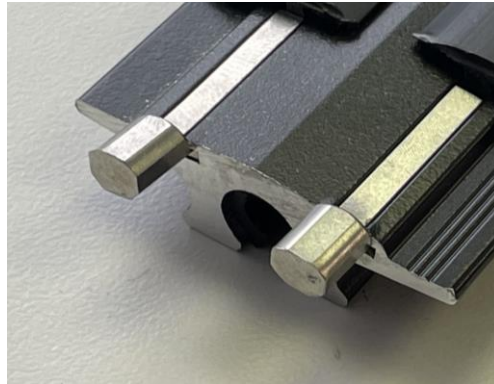
5. ...push fully against **housing** – no gaps.



6. Insert **spline** into groove.



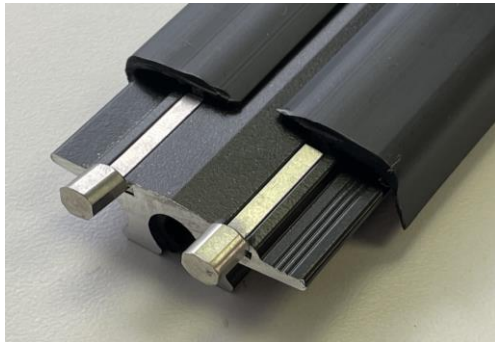
1. Insert track limiters into upper track wing slots on housing end **fully**.



! If track limiter is *not* fully inserted, screw head may interfere

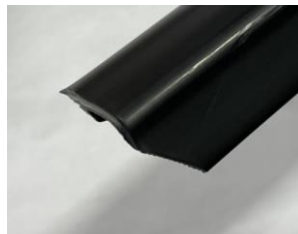
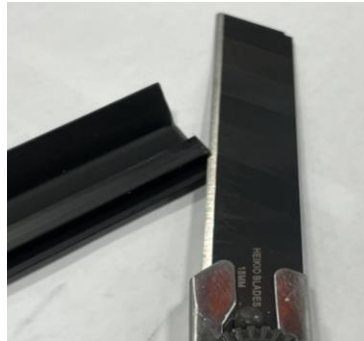


2a. Butt wings against



2b. Cut off insert part the length of track limiter.

OR

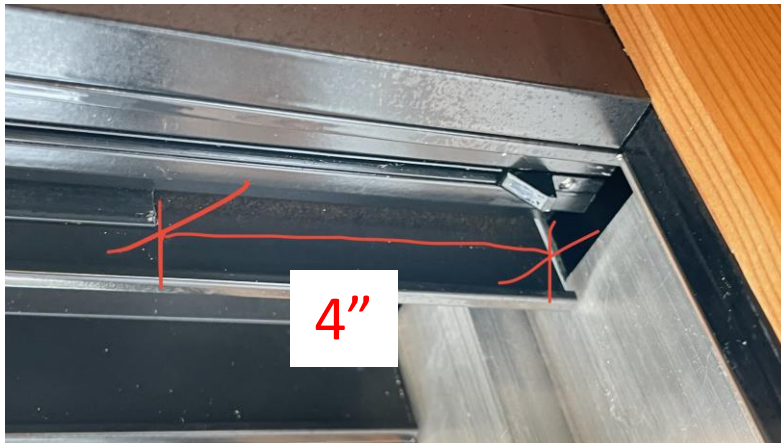


Cut **track wing**
corners at angle

**DO NOT CUT TOWARDS
YOURSELF!!!**

RECOMMENDED

1. At receiver end, cut **track wings** 4" shorter. This allows **track** to more easily pass above **jamb filler** when installing.



2. Insert the **upper track** at angle into the **jamb**. Ensure **track** floats freely in **track channel**. Move to back of **jamb**.



OPTIONAL

To more easily install the **upper track**, you may *temporarily remove* the **housing** after you have recorded the measurements (see step "Record Track Measurements"). After you have inserted the **track**, put **housing** back in. You will *not* have to remove the **header insert** as there is a 1/8" gap, allowing you to tilt **housing** in. This would have to be done *before* the **lower track** is installed.

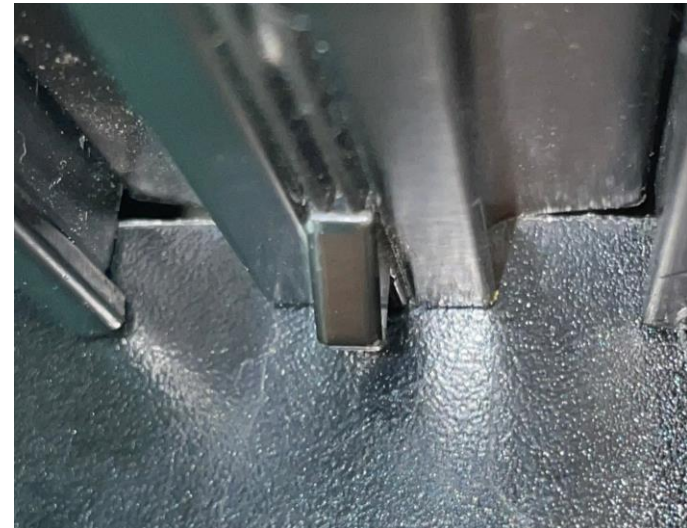
3. Feed track runner along zipper, then track through pullbar endcap, pushing fully against housing endcap – **no gap**.



4. Ensure track floats freely.



5. Ensure jamb filler is *not* notched too low & **no gap** between track and jamb filler.



TEST THE UNIT



Check the following:	✓ or ✗
Frame is Plumb, Level, Square, and not twisted?	
Tracks are level, parallel, and plumb side-to-side and front-to-back?	
Housing on the ground AND plumb?	
Housing mesh slot has not been squeezed during the install?	
Tracks are fully against the housing?	
The track limiters are on the entry end of the upper track?	
Tracks are fully against the housing?	
Track runners are not cut too short?	
Zipper are following through the housing endcap keyholes?	
Track runners have been sprayed inside with dry silicone ?	

! If any problems are not resolved, call 604-299-4426, or email support@wizardscreens.com **before leaving site!**

If necessary, review **The Horizon Troubleshoot Manual**