



4-Sided Frame

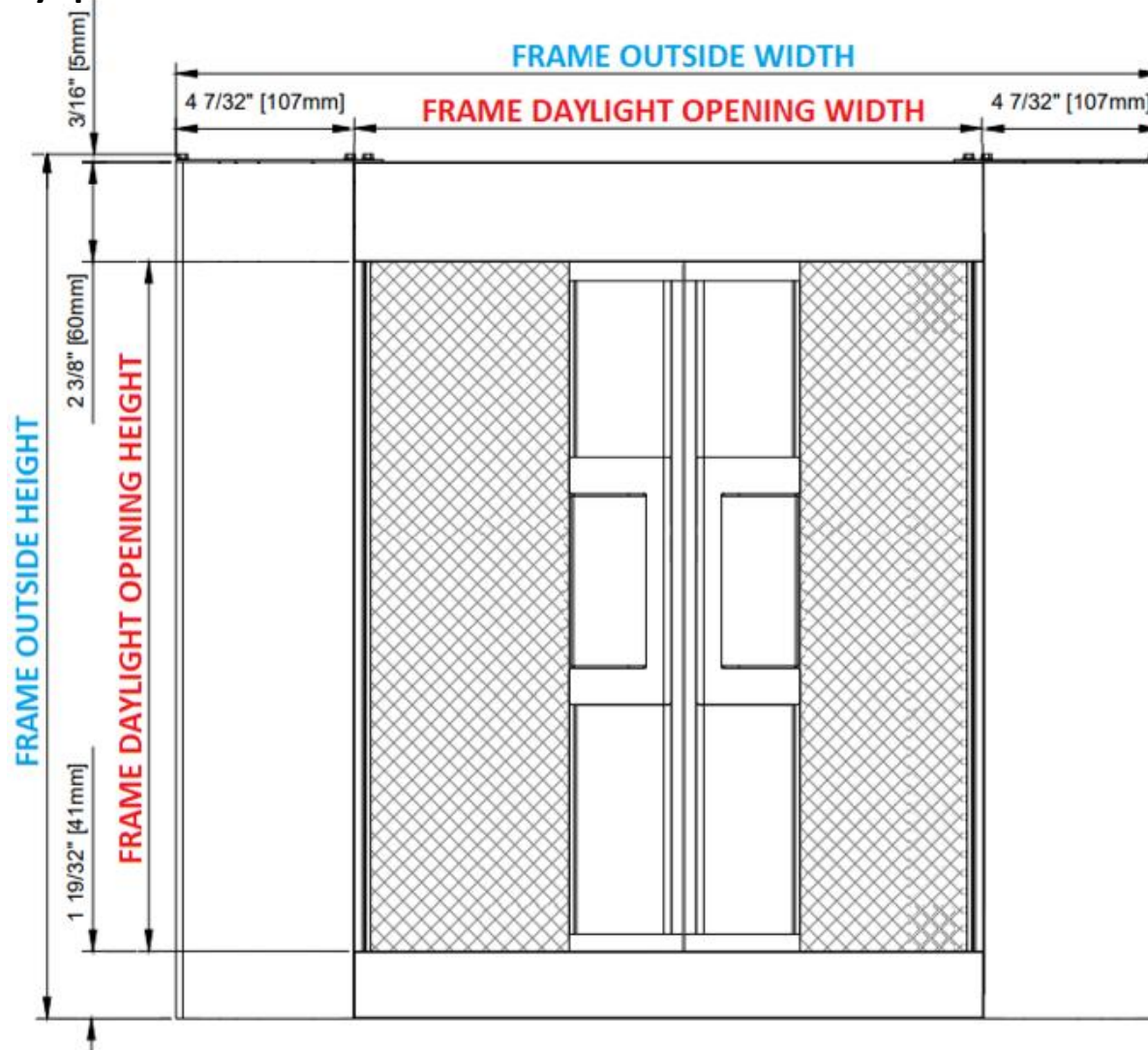
100mm DOUBLE Screen Installation

Minimum 2 installers required

! Call 604-299-4426, or email support@wizardscreens.com prior to starting if you have any questions

THE
HORIZON

Integrated System



Spray
tracks *only*
with dry
silicone.

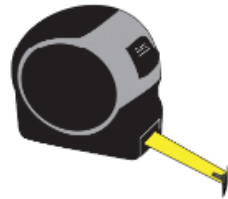
FIRST
Confirm the frame is
**plumb, level, straight,
and square.**
Adjust where necessary if
possible.

REQUIRED

Level



Tape Measure



Pencil



Shims



1.5mm Hex Key



Flat Pry Bar



9/64 and 1/8
Drill Bits



#1 and #2
Robertson
Driver Bits



Dry Silicone
Spray



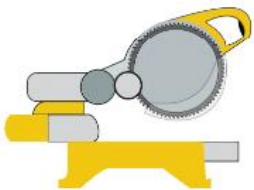
2-way Laser Level Kit



Utility Knife



Chop Saw



Drill



Step Ladder



Vacuum



Small
Countersink Bit



RECOMMENDED

Laser Distance Measure



1. Remove black spline



2. Remove **temporary sill covers**.



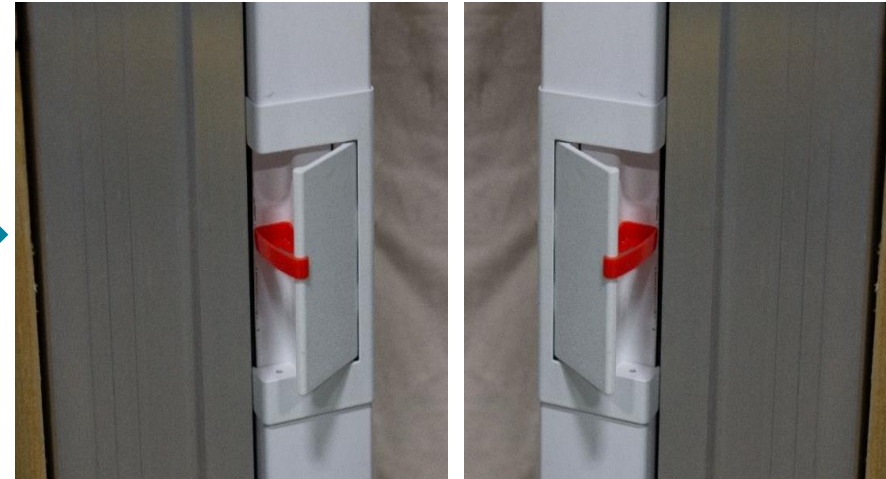
3. Remove **temporary jamb fillers**.



1. Install **housings**.



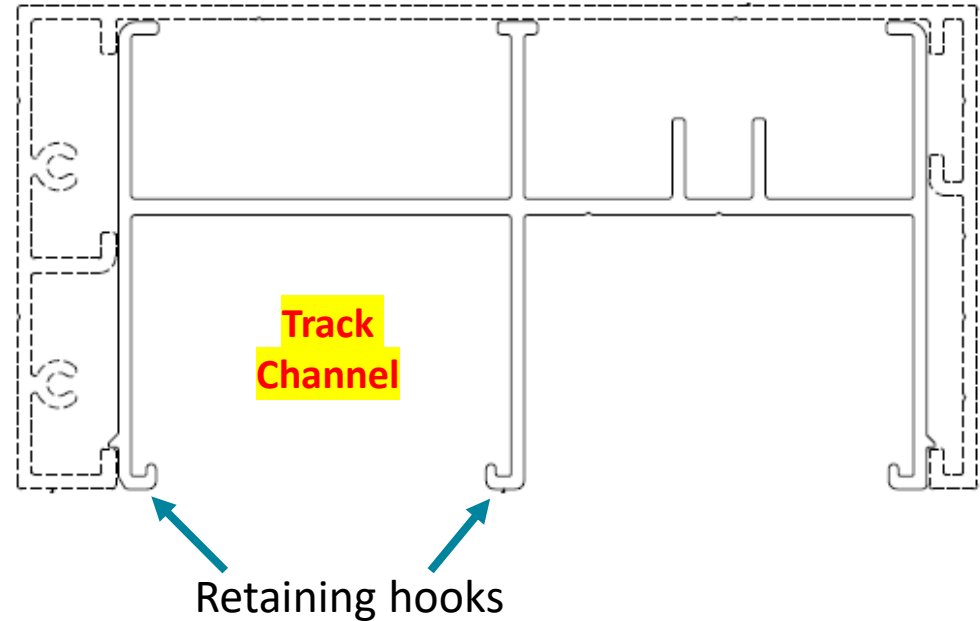
2. Insert **RED** wedge in handle to disengage brakes.



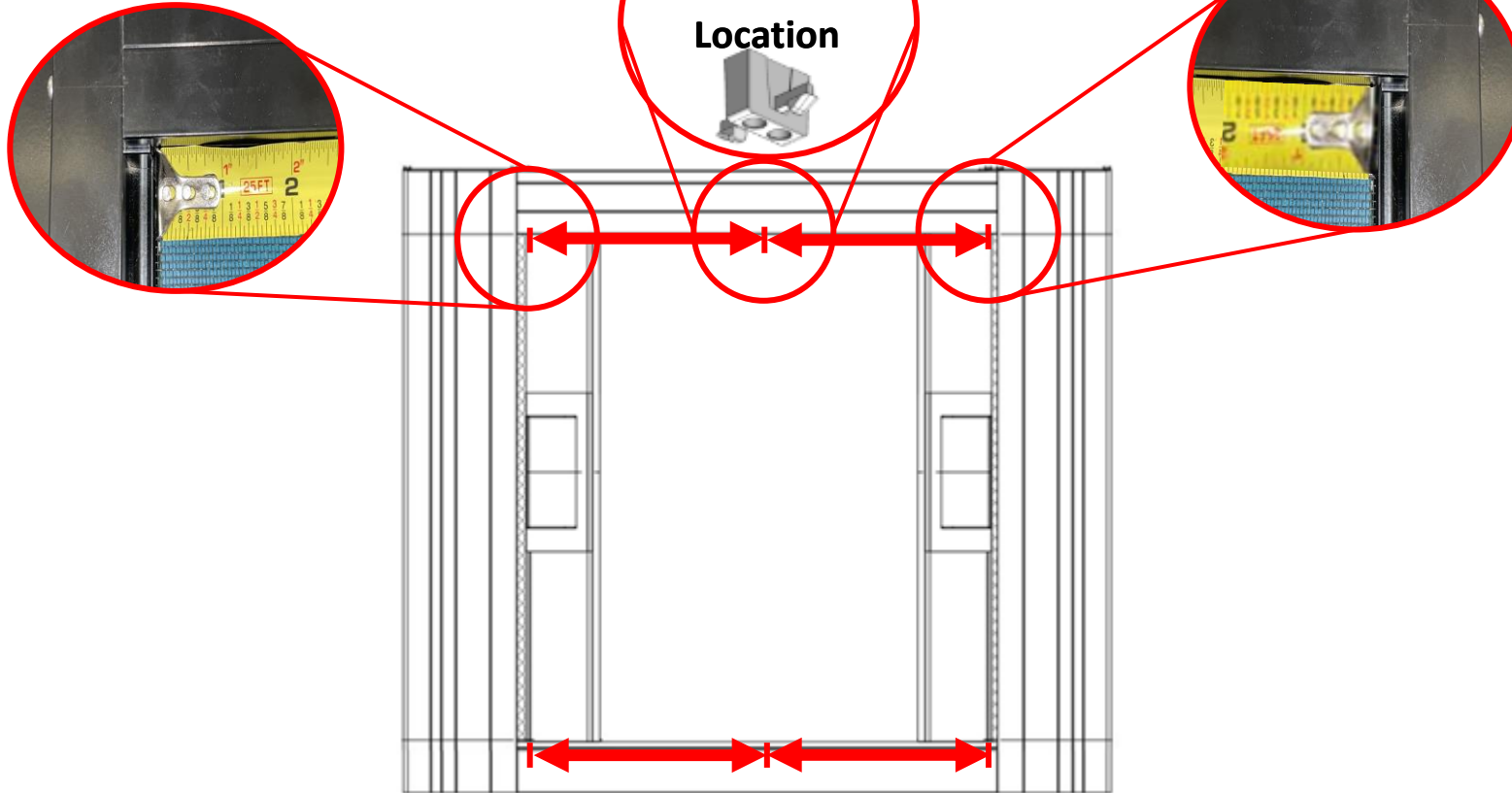
1. Install header inserts.



***Orient header insert as shown**



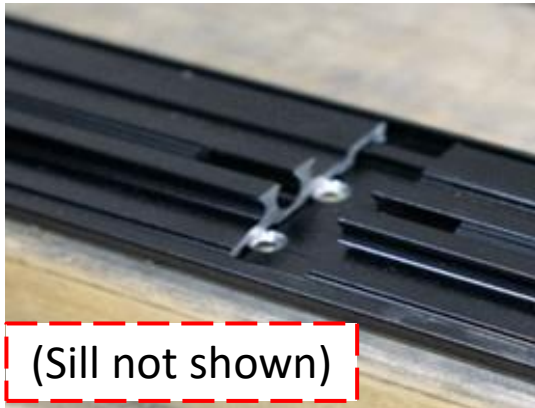
Total header insert length will be **1/8" shy**.
This means the housing will be removable without having to remove the header insert. Simply lift unit and tilt bottom out.



*****FIRST, push header insert *fully against* housing, which must not lean out of jamb. Do not accidentally measure too short.*****

Cut tracks:

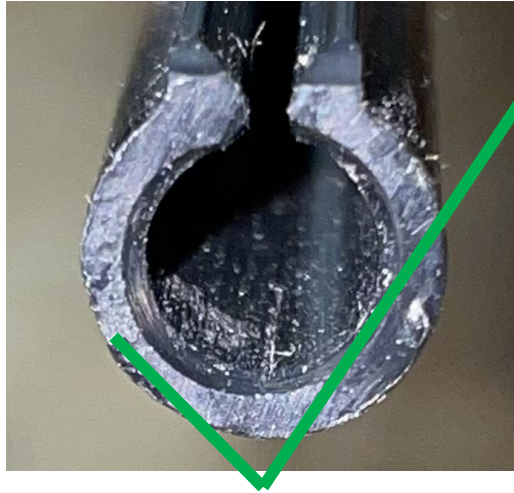
1. Measure between **housing endcap** and **desired joint location**. Record lengths.
2. *Subtract 5/16"* (*half track joiner thickness*) from each length and cut.
3. **Track runners** cut shorter to fit between **housing** and **latch**.



ALTERNATIVELY:

Temporarily affix **track joiners** and measure to **latches**.

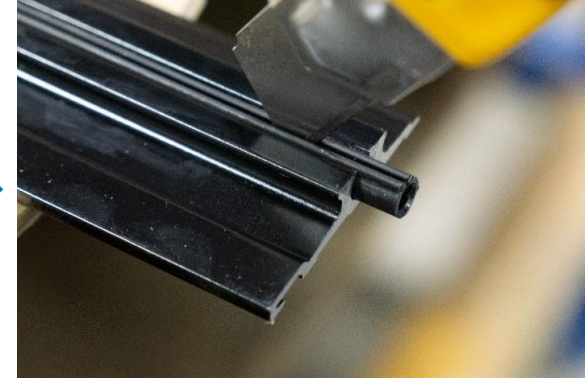
DO NOT CUT TRACKS AND RUNNERS TOO SHORT



Slightly counter-sink.

Barely trim the corners off.

Deburr and clear debris.



1. Grooves free of dirt.

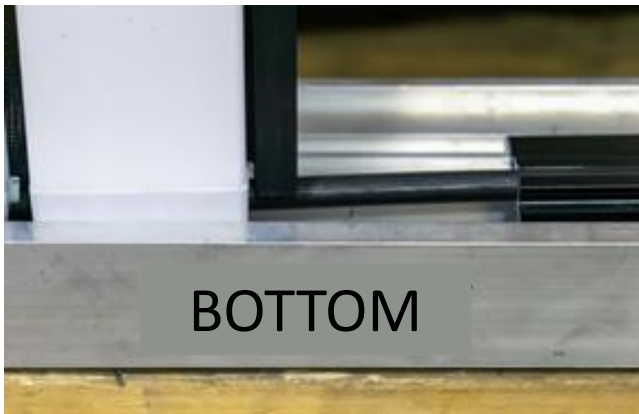


NO DIRT!

2. Lift **pull-bar**. Feed extended **track runner** along **zipper**.



3. Lower **pull-bar**.



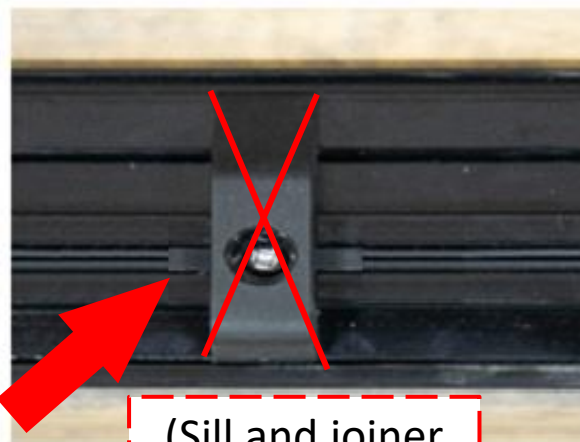
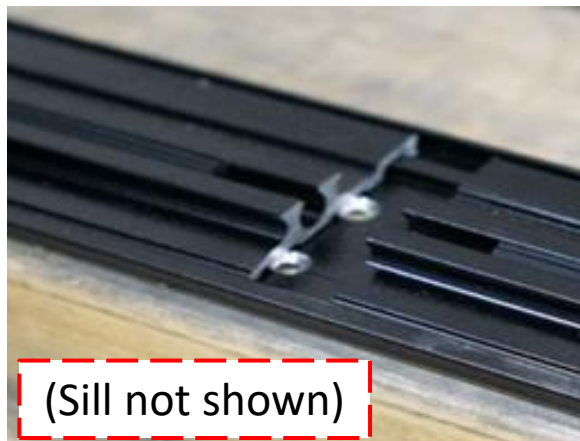
4. Feed **track** through **pull-bar**, pushing fully against **housing** – **no gaps**.



5. Interlock **tracks** with **sill**.



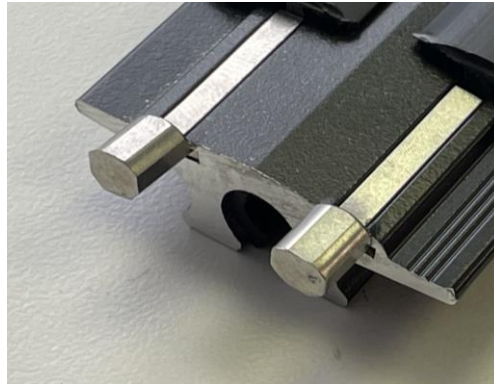
6. Attach **lower track joiner**.



7. Insert **spline** into groove.



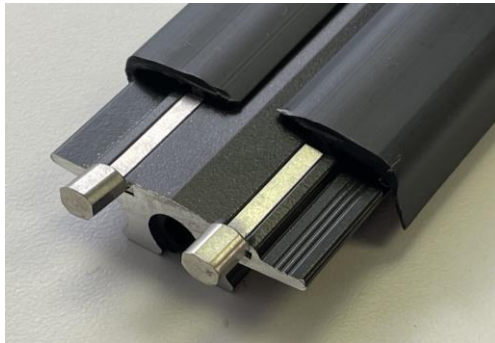
1. Insert **track limiters** into **upper track wing slots** on housing end **fully**.



! If track limiter is *not* fully inserted, screw head may interfere

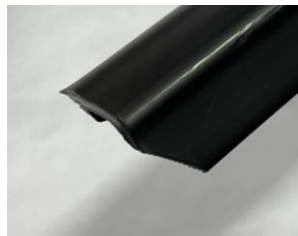


2a. Butt wings against track limiters.



2b. Cut off insert part the length of track limiter.

OR



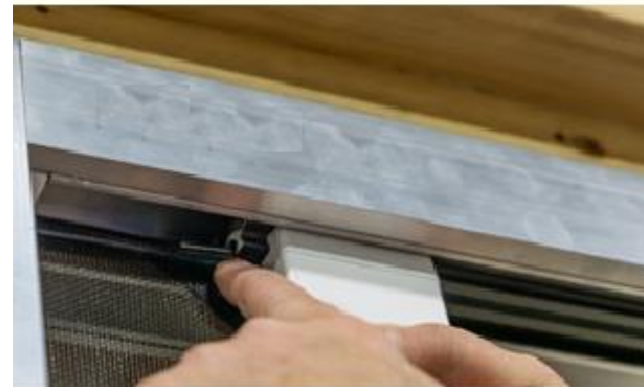
Cut corners of **track wings** at angle

DO NOT CUT TOWARDS YOURSELF!!!

1. Insert **upper tracks** into the **header insert track channel** and release them. **Tracks** will initially overlap.



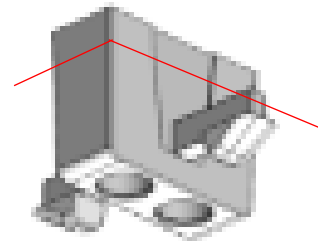
2. Feed **track runner** along zipper, then **track** through **pull-bar**, pushing fully against housing endcap – **no gaps**. Repeat on other side.



3. Attach **upper track joiner**. Ensure **tracks** float freely.



!IMPORTANT: It *may* be necessary to cut the *top* of the upper track joiner **shorter**. Test functionality first.



This will be **magnet**,
not mohair.



TEST THE UNIT



Integrated System

Check the following:	✓ or ✗
Frame is Plumb, Level, Square, and not twisted?	
Tracks are level, parallel, and plumb side-to-side and front-to-back?	
Housing on the ground AND plumb?	
Housing mesh slot has not been squeezed during the install?	
Tracks are fully against the housing?	
The track limiters are on the entry end of the upper track?	
Tracks are fully against the housing?	
Track runners are not cut too short?	
Zipper are following through the housing endcap keyholes?	
Track runners have been sprayed inside with dry silicone ?	

! If any problems are not resolved, call 604-299-4426, or email support@wizardscreens.com **before leaving site!**

If necessary, review **The Horizon Troubleshoot Manual**