



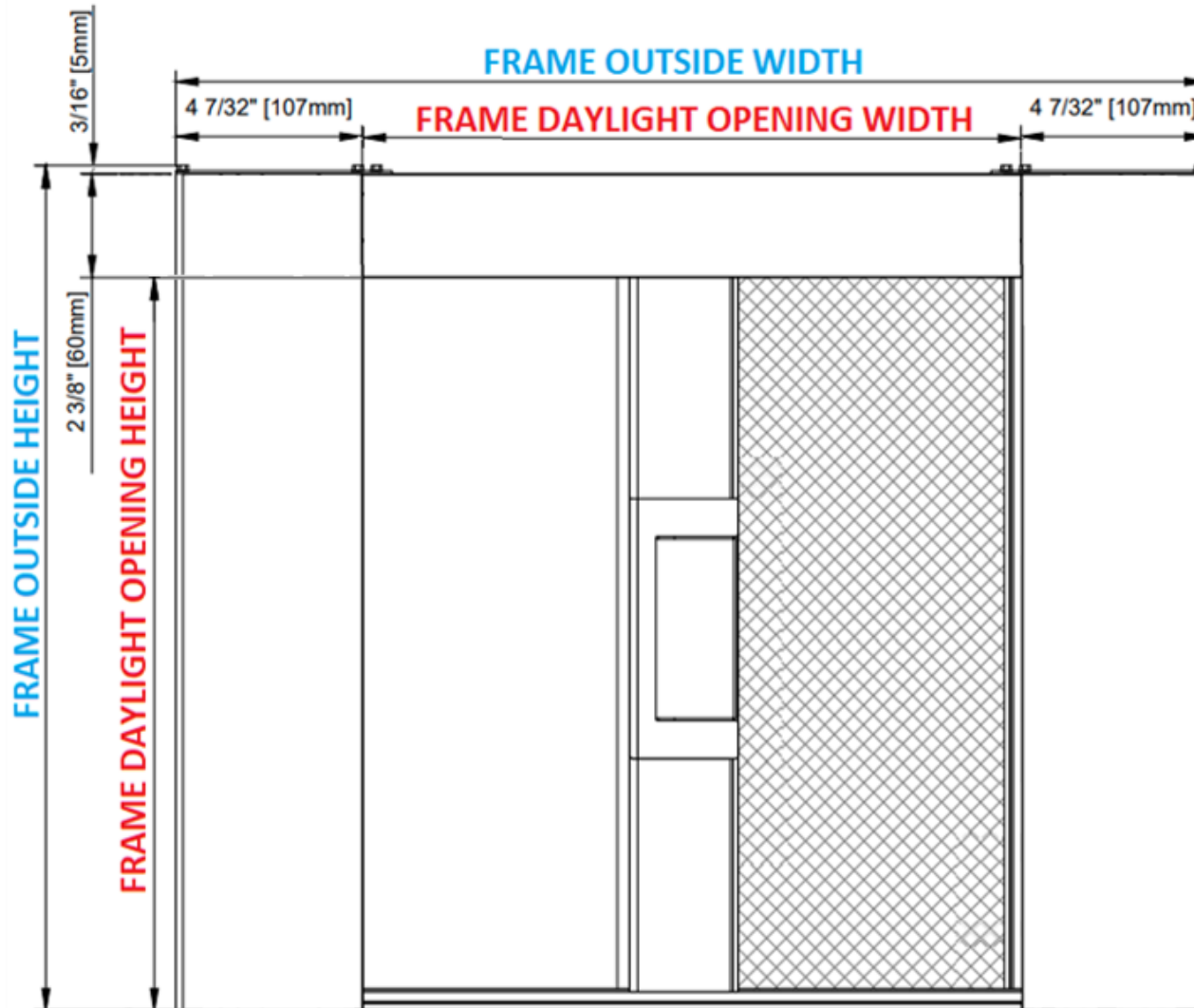
4-Sided Frame

100mm SINGLE Screen Installation

Minimum 2 installers required

! Call 604-299-4426, or email support@wizardscreens.com prior to starting if you have any questions

THE
HORIZON
Integrated System



Spray
tracks *only*
with **dry**
silicone.

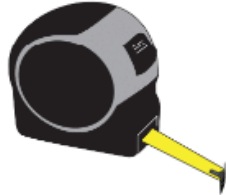
FIRST
Confirm the frame is
**plumb, level, straight,
and square.**
Adjust where necessary if
possible.

REQUIRED

Level



Tape Measure



Pencil



Shims



Flat Pry Bar



1.5mm Hex Key



Hacksaw



9/64 and 1/8
Drill Bits



#1 and #2
Robertson
Driver Bits



Dry Silicone
Spray



2-way Laser Level Kit



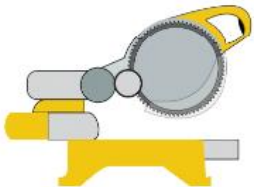
Filer



Utility Knife



Chop Saw



Drill



Step Ladder



Vacuum



Small
Countersink Bit



RECOMMENDED

Laser Distance Measure



1. Remove **spline**.



2. Remove **temporary, mill sill cover**.



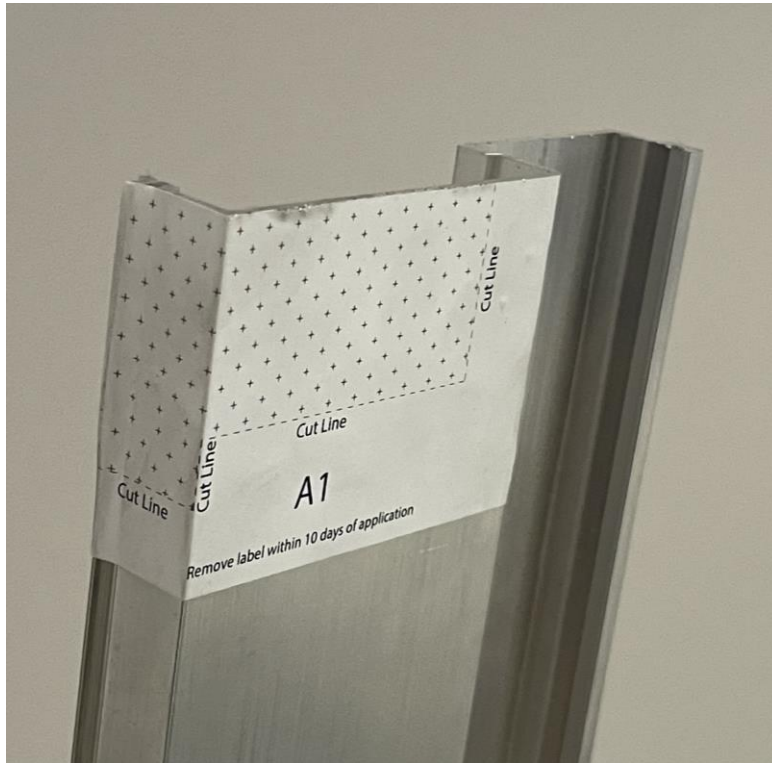
THE
HORIZON
Integrated System

3. Remove **temporary, mill jamb fillers**.



1. Apply label on *backside* of **jamb filler**.

Notch top of **jamb filler** along lines.



2. Install **jamb filler**.



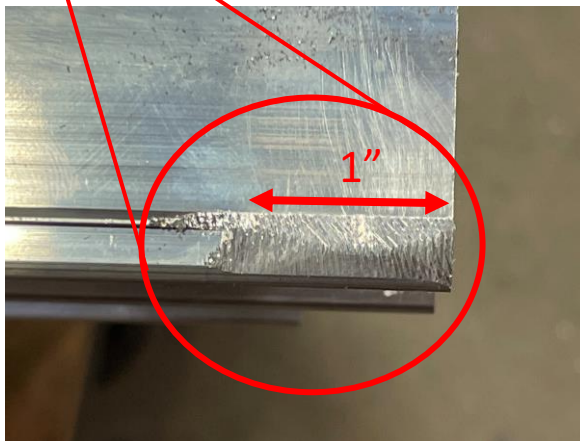
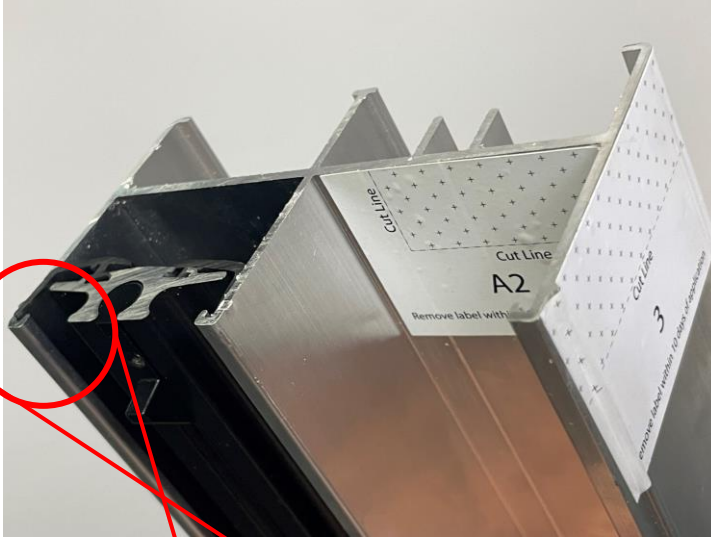
1. Install housing.



2. Insert **RED** wedge in handle to disengage brakes.



1. Apply labels and cut along lines.

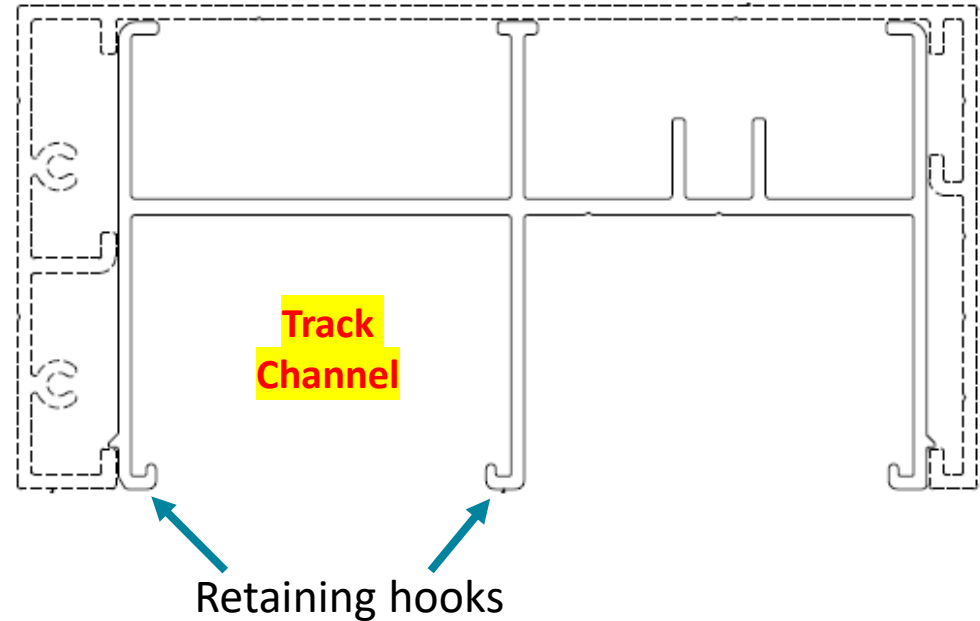


2. File flat **1"** of external lip.

1. Install header inserts.

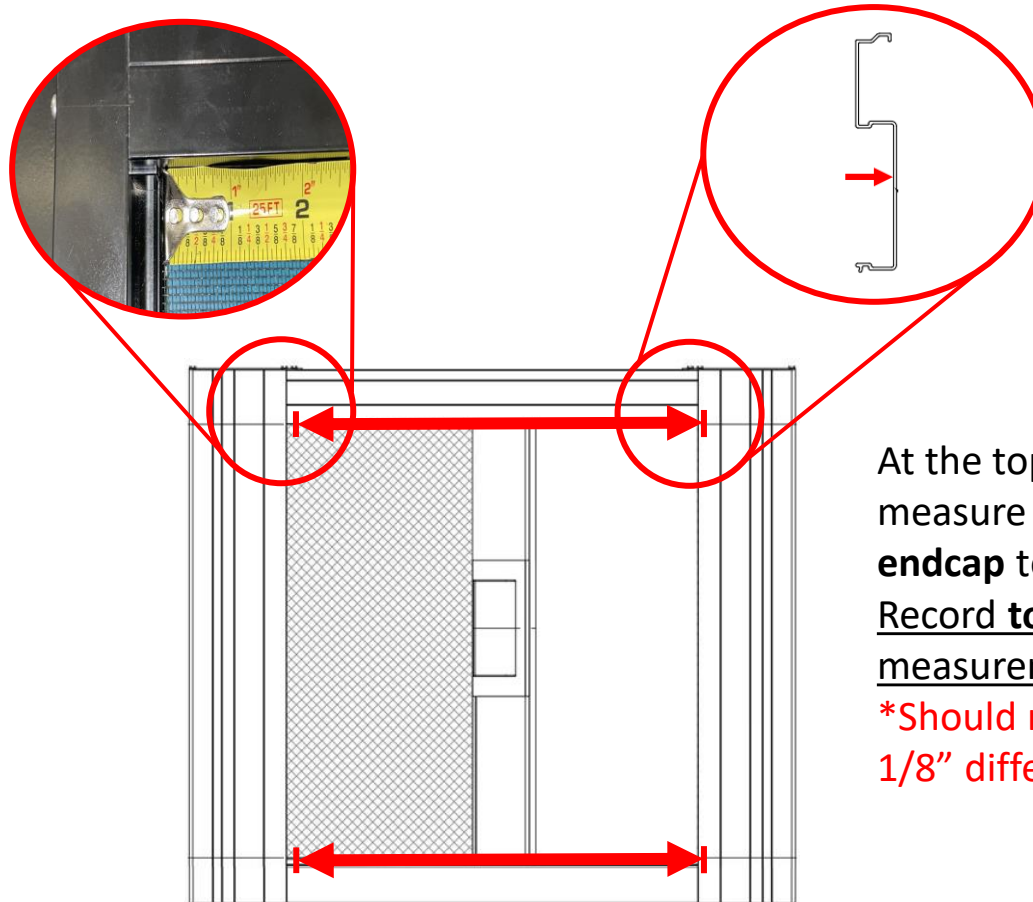


***Orient header insert as shown**



Total header insert length will be **1/8" shy**.
This means the housing will be removable
without having to remove the header
insert. Simply lift unit and tilt bottom out.

Laser Distance Measure



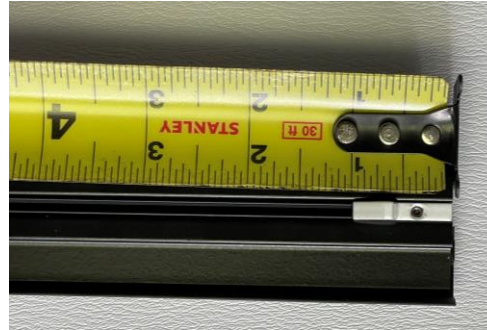
At the top *and* bottom,
measure from **housing
endcap** to **jamb filler indent**.
Record **top** and **bottom**
measurements.

**Should not be more than
1/8" difference.*

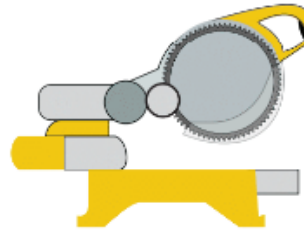
*****FIRST, push header insert *fully against*
housing, which must not lean out of jamb.
Do not accidentally measure too short.*****

Cut tracks:

1. Affix latch.
2. Track runner against latch.

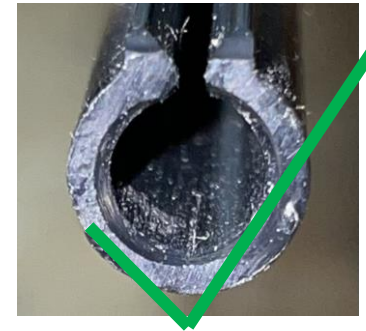


3. Cut track to recorded measurement.
4. Repeat.



DO NOT CUT TRACKS AND RUNNERS TOO SHORT

Entry end



Prepare track runner entry end:

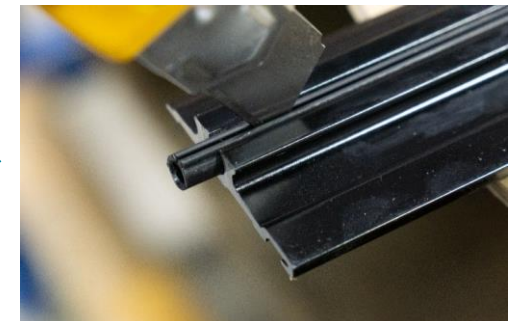
Slightly counter-sink.



Barely trim the corners off.



Deburr and clear debris.

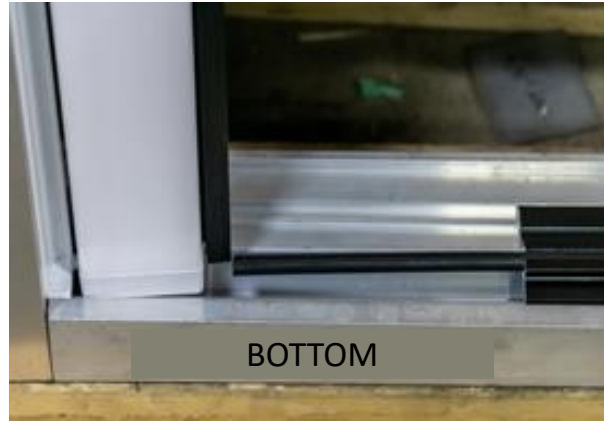


1. Grooves free of dirt.

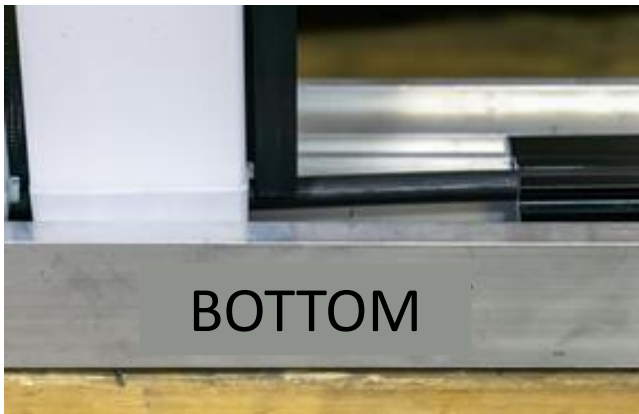


NO DIRT!

2. Lift **pull-bar**. Feed extended **track runner** along **zipper**.



3. Lower **pull-bar**.



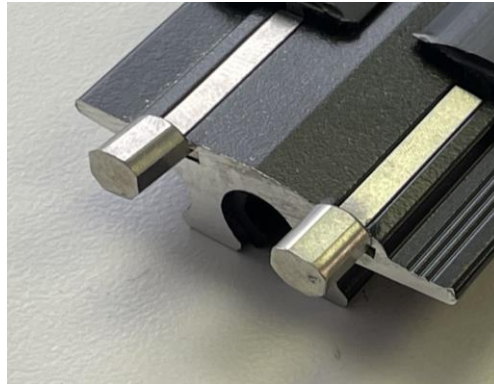
4. Feed **track** through **pull-bar**, pushing fully against **housing** – **no gaps**.



5. Interlock **tracks** with **sill**. Insert **spline** into groove (not shown).



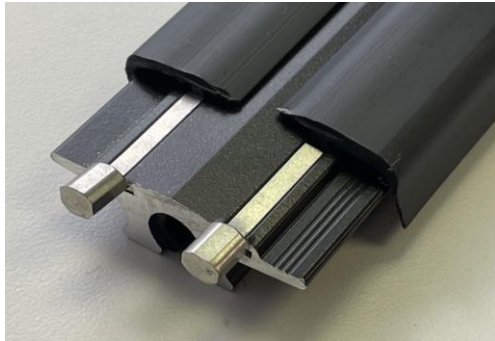
1. Insert **track limiters** into **upper track wing slots** on housing end **fully**.



! If track limiter is *not* fully inserted, screw head may interfere

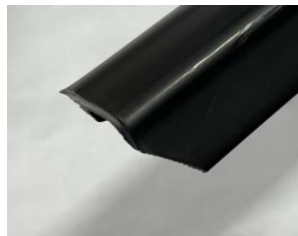


2a. Butt wings against track limiters.



2b. Cut off insert part the length of track limiter.

OR

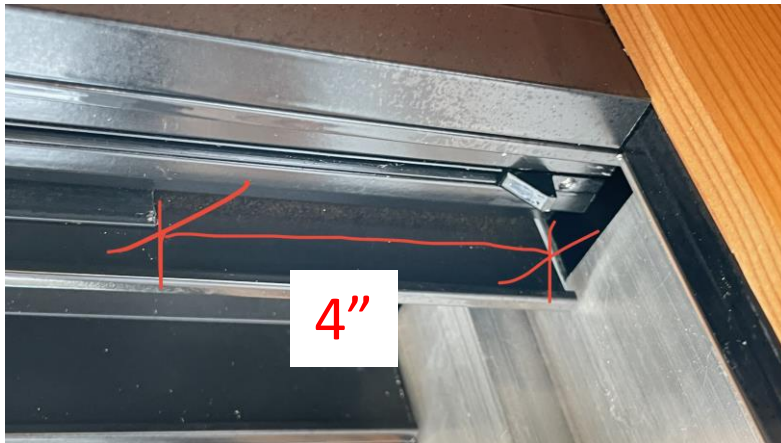


Cut corners of **track wings** at angle

DO NOT CUT TOWARDS YOURSELF!!!

RECOMMENDED

1. At receiver end, cut **track wings** 4" shorter. This allows **track** to more easily pass above **jamb filler** when installing.



2. Insert the **upper track** at angle into the **jamb**. Ensure **track** floats freely in **track channel**. Move to back of **jamb**.



OPTIONAL

To more easily install the **upper track**, you may *temporarily remove* the **housing** after you have recorded the measurements (see step "Record Track Measurements"). After you have inserted the **track**, put **housing** back in. You will *not* have to remove the **header insert** as there is a 1/8" gap, allowing you to tilt **housing** in. This would have to be done *before* the **lower track** is installed.

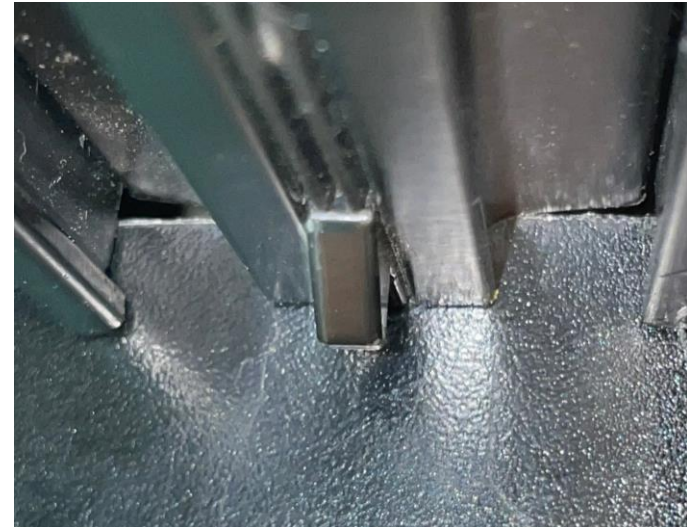
3. Feed track runner along zipper, then track through pullbar endcap, pushing fully against housing endcap – **no gap**.



4. Ensure track floats freely.



5. Ensure jamb filler is *not* notched too low & **no gap** between track and jamb filler.



TEST THE UNIT



Check the following:	✓ or ✗
Frame is Plumb, Level, Square, and not twisted?	
Tracks are level, parallel, and plumb side-to-side and front-to-back?	
Housing on the ground AND plumb?	
Housing mesh slot has not been squeezed during the install?	
Tracks are fully against the housing?	
The track limiters are on the entry end of the upper track?	
Tracks are fully against the housing?	
Track runners are not cut too short?	
Zipper are following through the housing endcap keyholes?	
Track runners have been sprayed inside with dry silicone ?	

! If any problems are not resolved, call 604-299-4426, or email support@wizardscreens.com **before leaving site!**

If necessary, review **The Horizon Troubleshoot Manual**