

# SmartScreen Motorized Recessed Comprehensive Guide



# Contents

Recommendations & Resources .....	3
Preliminary Planning .....	4
Measurements .....	5
Ordering Process .....	6
Field Preparation .....	7
Installation .....	8
1) Affix brackets .....	8
2) Affix recessed U-channels .....	8
3) Install rolled screen.....	9
4) Somfy Maestria 500 Series Motor programming .....	9
5) Install bottom-bar .....	10
6) Tracks.....	10
7) Fine-tune screen limits .....	12
8) Route Cord and Re-attach Plug.....	12
9) Finishing Touches .....	12

## Recommendations & Resources

1. Read these instructions before first installation.
2. Bookmark these instructions and print copies to have on hand.

Technical info

[www.wizardscreens.com/technical](http://www.wizardscreens.com/technical) in “SmartScreen Motorized” table

3. Learn about the **Somfy Maestria 500 motor**

### Download the Help me app



Integration guide: <https://snabatools.com/integration-configurator>

Quick guide: [Maestria Quick Visual Guide 10-2018.pdf \(somfy.com\)](#)

Video: [Maestria Quick Guide - Manual Limit Adjustment](#)

Training Portal: [https://www.somfy.com/users/sign\\_up](https://www.somfy.com/users/sign_up)

**DO NOT PROCEED WITH INSTALLATION BEFORE DOING THE ABOVE.**

4. Call **1-888-949-3667**
  - a. to schedule an installation training session if deemed necessary
  - b. if problems arise during installation
5. Wizard Ordering Portal  
<https://portal.wizardscreens.com/>

## Preliminary Planning

- Min. width = 38"
- Max. width = 30'
- Max. width (vinyl) = 25'
- Max. height = 16'

\*Maintain communication between builder and architect during the installation process to ensure nothing changes in regards to:

- where and how the u-channel & brackets will be installed;
- that the cavity remains clear in the specified minimum dimensions; and
- that there is space for a removable access panel (if applicable).

1) Note planned opening size(s) (L x W).

2) Component Table

Selectable					Dimensional Threshold	
Screen Material	Roll-tube	Bracket	Motor	Idler	Width	Height
Any (excl. vinyl)	4"	5"	Maestria 525	Mack Daddy Pivot	38" to 22'4"	& less than 12'
Any (excl. vinyl)	5 3/8"	7"	Maestria 550	Double 7 1/4"	22'4" to 30'	& 12' to 16'
Vinyl	See "Dim. Thresh."		Maestria 550	See "Dim. Thresh."	38" to 25'	Up to 16'

**\*NOTE: If size is beyond threshold in first row, appropriate items will be auto-selected.**

**For more details, see step 5 "ORDERING PROCESS"**

3) Cavity Considerations

See "Builder Considerations" on the [Tech Page](#)

4) Graded floor (i.e., sloped patio)

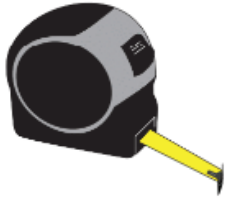
- a) It can be requested the screen be cut at the bottom to a **maximum 1 1/2" grade.**
- b) Mohair can accommodate an **extra 1" grade.**

**\*BRACKETS MUST BE LEVEL!**

# Measurements

## 1) Tools

Tape Measure



Pencil



2-way Laser Level Kit



Laser Distance Measure



## 2) Establish **plumb** and **level** marks. Then determine dimensions.

\*See “**Standard Comprehensive Guide**”, pages 6 & 7 Step 2 **left** column.  
**VERY IMPORTANT PRINCIPLES!**

## 3) Deductions:

### a) Width

$\frac{1}{4}$ " Safety =  $-\frac{1}{4}$ " **Width Deduction**

This allows some space to shim u-channels plumb and straight.

### b) Height

- i. Record **largest** height measurement from **top of future-brackets to floor**.
- ii. If floor is *graded*, measure from **top of future-brackets to floor** at **left** and **right** sides. Record both measurements.
  - \* It can be requested the screen be cut at the bottom to a **maximum 1 ½"** grade.
  - \*\*Mohair can accommodate an **extra 1"** grade.
  - \*\*\***BRACKETS MUST BE LEVEL!**

## Ordering Process

- 1) Dimensions  
See “**Standard** Comprehensive Guide”.
- 2) Colors of components  
See “**Standard** Comprehensive Guide”.
- 3) Bottom-bar Seals  
See “**Standard** Comprehensive Guide”.
- 4) Screen Material  
See “**Standard** Comprehensive Guide”.
- 5) Motor  
See “**Standard** Comprehensive Guide”.
- 6) Component Table

Selectable					Dimensional Threshold	
Screen Material	Roll-tube	Bracket	Motor	Idler	Width	Height
Any (excl. vinyl)	4”	5”	Maestria 525	Mack Daddy Pivot	<b>38” to 22’4”</b>	<b>&amp; less than 12’</b>
Any (excl. vinyl)	5 <sup>3</sup> / <sub>8</sub> ”	7”	Maestria 550	Double 7 ¼”	<b>22’4” to 30’</b>	<b>&amp; 12’ to 16’</b>
Vinyl	See “Dim. Thresh.”		Maestria 550	See “Dim. Thresh.”	<b>38” to 25’</b>	<b>Up to 16’</b>

**\*NOTE: If size is beyond threshold in first row, appropriate items will be auto-selected.**

If the project has multiple openings of varied sizes, and some require the larger roll-tube, consider the **screen retraction speed**:

Assume some smaller openings only require 4” roll-tubes and some larger openings require 5 <sup>3</sup>/<sub>8</sub>” roll-tubes.

- A 4” roll-tube will retract faster than a 5 <sup>3</sup>/<sub>8</sub>” roll-tube. Order the 5 <sup>3</sup>/<sub>8</sub>” roll-tube and Maestria 550 motor for *all* units.

- 7) Remotes  
See “**Standard** Comprehensive Guide”.
- 8) Optional Accessories  
See “**Standard** Comprehensive Guide”.
- 9) Other Special Requests:  
See “**Standard** Comprehensive Guide”.

## Field Preparation

Before installing the SmartScreen Motorized units

### 1) Tools

- a) Cordless drill
- b) Desired driver bits
- c) Drill bits
- d) Phillips screwdriver
- e) 9-in-1 painter's tool
- f) 2-way laser level
- g) Tape measure
- h) Laser distance measure
- i) Scissors
- j) Needle nose pliers
- k) Reverse action clamping pliers
- l) Duct tape (if floor is graded)
- m) Dry silicone spray
- n) Caulking gun with caulk
- o) Chop saw with non-ferrous blade
- p) Appropriate fasteners. Determine what material the components will be fastened to (e.g. lumber, metal, plywood, etc.) **Min. 2" long.**

### 2) Contents of Shipment per unit

*\*Contents may vary depending on type or style ordered*

- a) Assembled roll-tube, motor, pivot (or double idler system), screen, and power cord.
- b) Brackets
- c) Bottom-bar with seal
- d) Probes (x2).
- e) Recessed u-channels (x2).
- f) Recessed tracks with clips (x2).
- g) Remote(s).

### 3) Package and unit visual inspection

- a) If the **packages** are damaged, the **unit may still be free of damage.**  
**You must mark the external damage on the waybill.**
- b) Report any potential damage to Wizard Screens **immediately** with pictures.

### 4) Unpackaging

- a) Place packages on a flat surface.
- b) Carefully remove components from packages. **Do not cut screen! Do not scratch components!**
- c) Report any visible damage to Wizard Screens **immediately** with pictures.

## Installation

\*Minimum 2 people recommended.

### 1) Affix brackets

a) Affix brackets aligned to lateral *and* level marks established during measurement phase.

\*Back-of-bracket to back-of-bracket distance *must be* order width.

### 2) Affix recessed U-channels

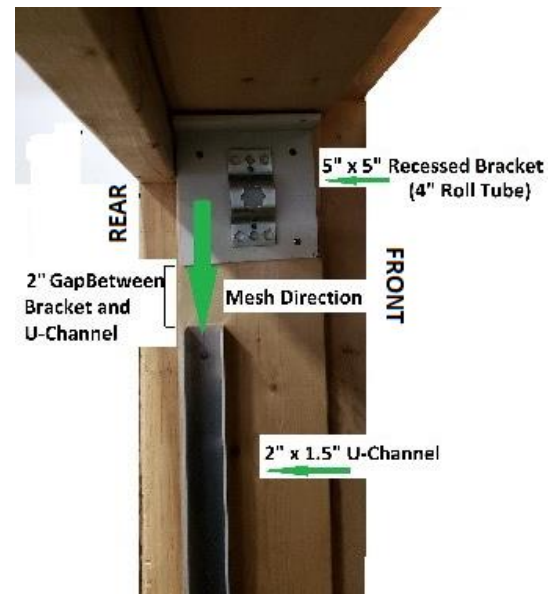
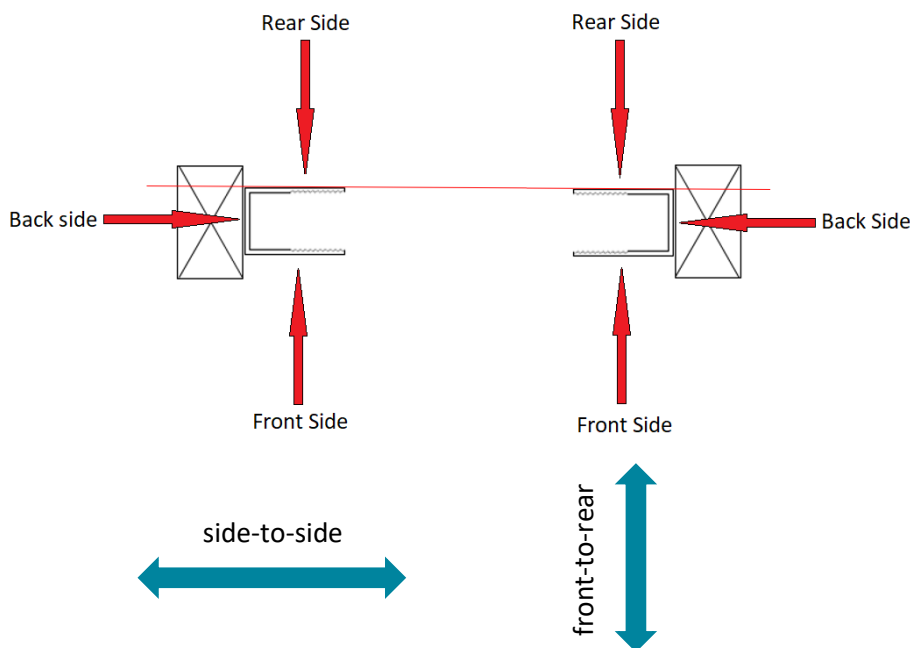
a) Mark to desired lengths and cut.

b) Pre-drill holes 2" from top and bottom. Then every 36" O/C.

c) Fasten u-channels to surface like illustration.

i) Plumb front-to-rear & side-to-side. Shim if necessary.

ii) U-channels aligned with back & rear of brackets.

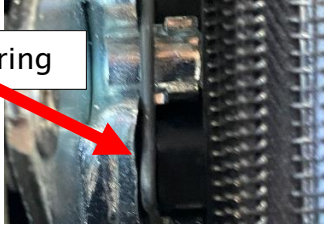




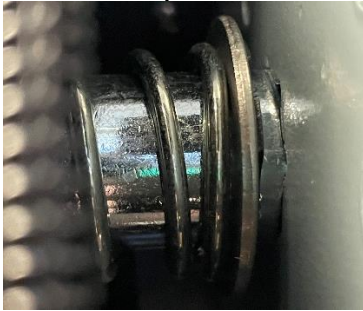
### 3) Install rolled screen

#### a) Attach spring ring onto crown.

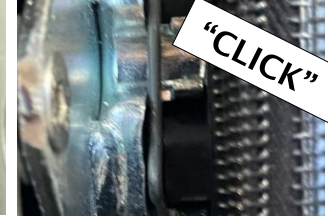
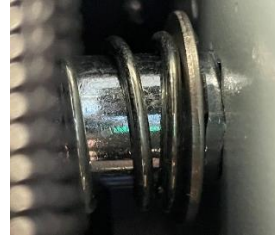
Spring ring



#### b) Insert the pivot.



#### c) Compress pivot end, then insert motor end into crown. **\*There must be a distinct *click* sound and feel.**



\*If installing with a **double idler** system, see instructions on [tech page](#).

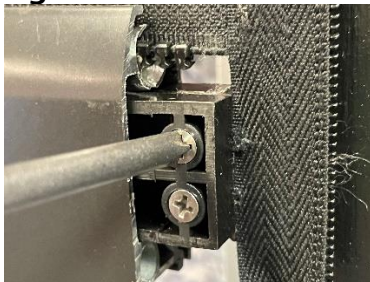
### 4) Somfy Maestria 500 Series Motor programming See “**Standard Comprehensive Guide**”.

5) Install bottom-bar

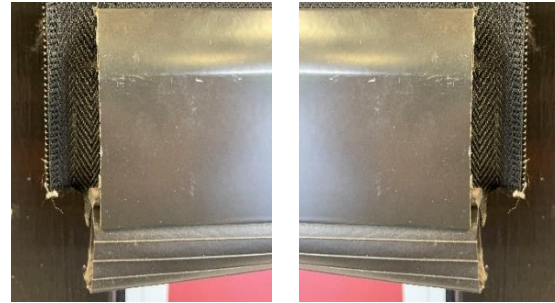
- a) Send screen to comfortable height.
- b) Fold tab up and feed bottom-bar along zipper.



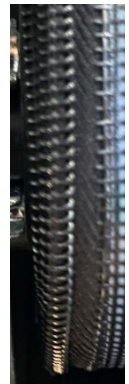
- c) Manually screw probes onto tabs until they pinch fully. **\*Do not over-tighten screws.**



- a) Flush seal at one end of bottom-bar and cut excess off at other. Cut excess zippers off just beyond tabs.

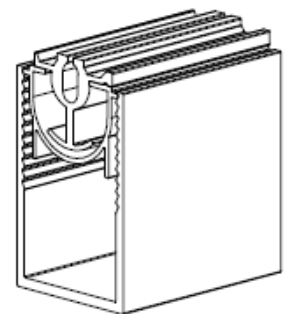


- d) Send screen to upper limit, ensuring zipper stacks well.



6) Tracks

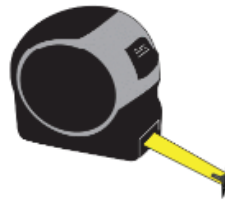
- a) Mark tracks 1" longer than u-channels and cut. If lengths are different, label tracks.
- b) Starting with one track:
  - i) Feed track along zipper.
  - ii) Position track in u-channel where zipper lies and plumb.
  - iii) Drop screen to lower limit.
  - iv) If necessary, adjust track to where zipper lies in relation to roll-tube. Ensure plumb.
  - v) Send screen to upper limit, ensuring zipper stacks well.



c) Install other track **plumb** and **parallel**



Tape Measure



2-way Laser Level Kit



d) Spray dry silicone into zipper grooves.



- e) Run screen up and down, ensuring the following:
- i) The zipper stacks well - no telescoping
  - ii) Obstacle detection does not activate prematurely
  - iii) Zipper does not unzip from tracks
  - iv) Screen maintains trampoline like bounce
  - v) Slide bar remains centered

7) Fine-tune screen limits

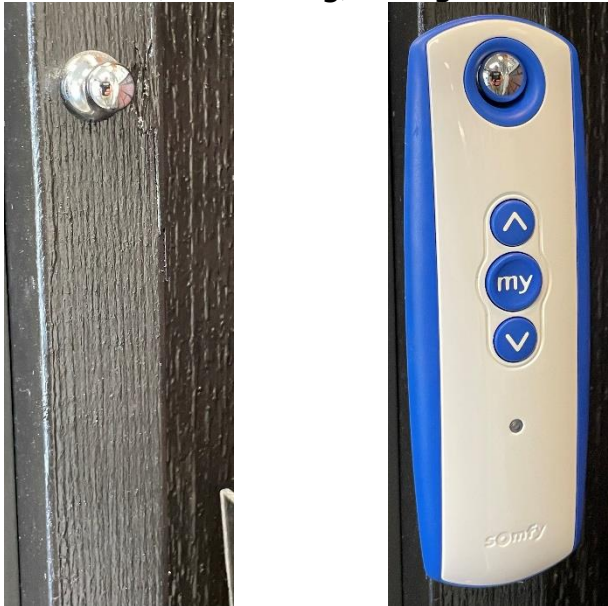
See “**Standard Comprehensive Guide**”.

8) Route Cord and Re-attach Plug

See “**Standard Comprehensive Guide**”.

9) Finishing Touches

- a) Affix the wall mount for the remote INSIDE because the remote is sensitive to moisture (IP 30 rating). Hang remote.



See “Homeowner Training and DO's & DON'Ts” on [tech page](#).