

VistaView™

Installation Guide

Product tech. support:

support@wizardscreens.com 1-888-949-3667

First things

- **READ INSTRUCTIONS BEFORE PROCEEDING.**
- If there is a glazed door, it must be in place *before* screen installation.
- If concealed, screen unit must be **removable & serviceable.**

Unpackaging

- Inspect at shop.
- Transit to site protected.
- **Report damage to sales rep. with pictures immediately**

Preparation

- **Figure 1** Zippers in slots.
- **Figure 2** Leave **ON** *until* exchanging with tracks.
 1. Exchange with **lower** track. Affix track.
 2. Exchange with **upper** track. Affix track.
- **Figure 3** Leave **IN** *until* installation complete.
- **Do NOT draw screen on bench!**

VistaView™

Figure 1



Figure 2



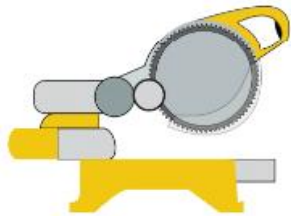
Figure 3



#8 Robertson Screwdriver



Chop Saw



Level



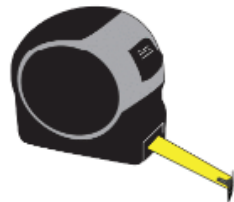
9/64 and 1/8 Drill Bits



Drill



Tape Measure



#1 and #2 Robertson Driver Bits



Step Ladder



Pencil



Dry Silicone Spray



Vacuum



Shims



Small Countersink Bit



Utility Knife



Rubber Mallet



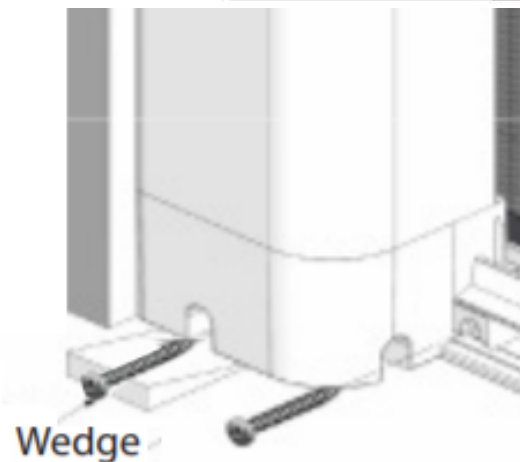
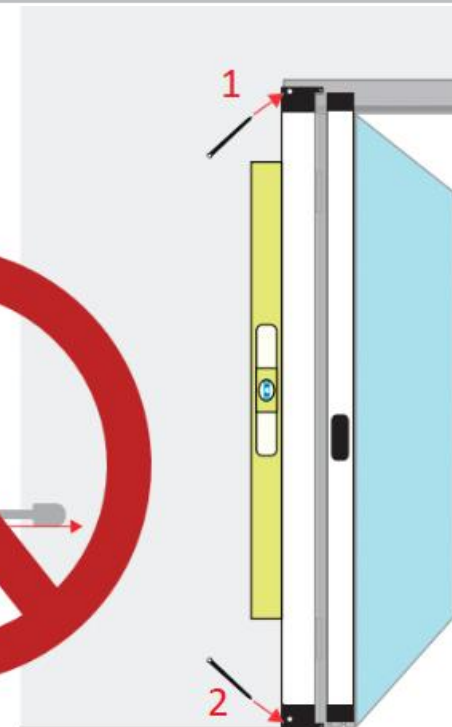
OPTIONAL
2-way Laser Level Kit



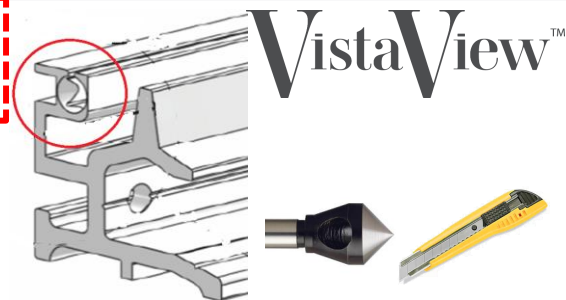
1. Maneuver housing into position and ensure plumb.
2. Mark endcap screw holes, move housing, and predrill 9/32" holes.
3. Affix housing with a housing screw at top (1).
4. For bottom (2), repeat steps 2 & 3. Ensure **plumb** and **free of twist**. Use shims if necessary.

*NOTE: *Wait* to “drive home” the screws until *after* tracks are fastened to endcap nubs.

*Brake rivet *must* remain in handle until the very end of installation.



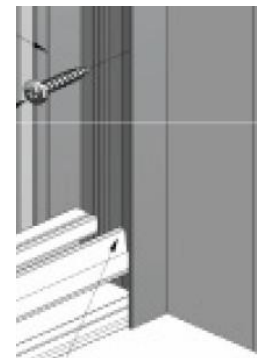
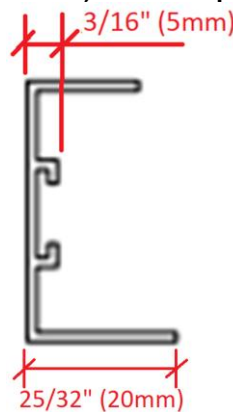
1. Onto **entry ends** of both tracks, countersink zipper path and de-burr.



2. Mallet track guide onto **zipper entry end**.



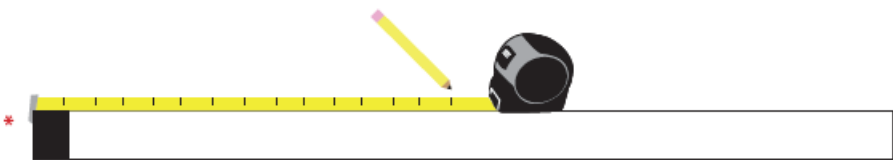
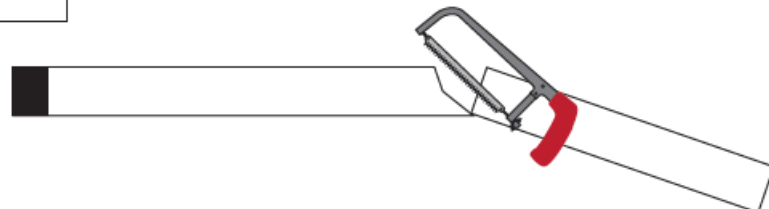
3. Measure from **housing** to **opposite end** at the bottom, middle, and top. Record *smallest* measurement. Mark on floor.



Track fits in as shown

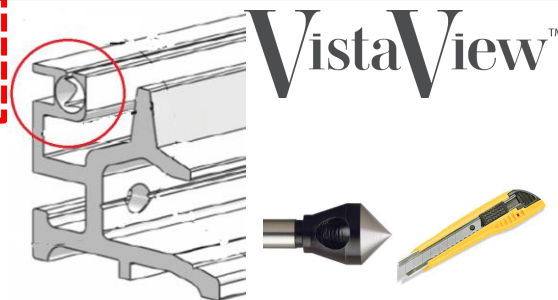
4. Calculate final measurement:

- 1) Inside/Reveal: Subtract **3/16"** from mark.
- 2) Surface: Add **25/32"**, then subtract **3/16"**.
- 3) Alternatively, position receiver at mark on floor. Mark at magnet holder.

5. * 
6. Cut upper & bottom tracks to **identical length**. * 

7. Pre-drill 1/8" holes @ 16" O/C into each track.

1. Onto **entry ends** of both tracks, countersink zipper path and de-burr.



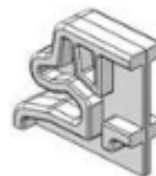
VistaView™



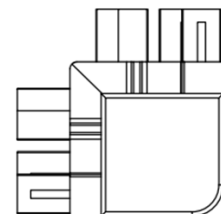
2. Mallet track guide onto **zipper entry end**.

3. Determine measurement from **housing to joint or end of corner** and record.

Straight Joiner

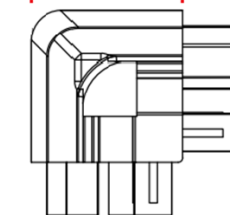
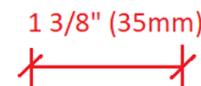


Internal Corner



1 3/8" (35mm)

External Corner



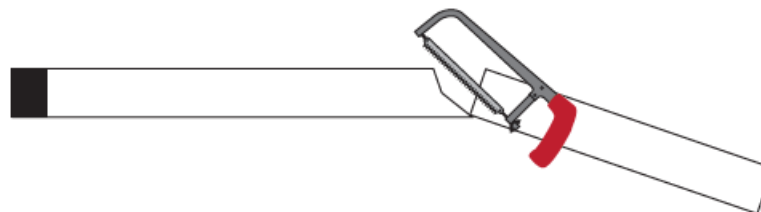
4. Calculate final measurement

1) **Straight:** Subtract **1/16"** to accommodate *straight* joiner.

2) **Corner:** Subtract **1 3/8"** to accommodate *corner* joiner.



6. Cut upper and lower tracks to **identical length**. *



7. Repeat on other side.

8. Pre-drill 1/8" holes @ 16" O/C into each track.



1. Remove *only* **LOWER track support**.
2. Feed lower track along pull-bar endcap & zipper. Push against housing.

3. Fasten lower track guide to housing endcap lug, then fasten remainder of track **level**. Shim if necessary.

4. Repeat steps 1 & 2 for upper track.



5. “Drive home” housing screws.

6. Bring pull-bar to nearest pre-drilled hole. Fasten upper track with **1/8”** gap above pull-bar. Fully retract, then draw to next hole. Repeat process until complete.

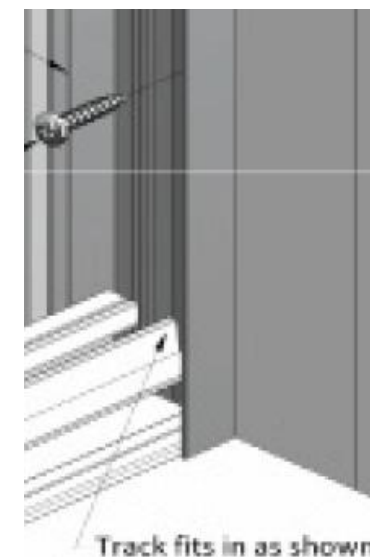
7. Singles: Position receiver against end of tracks and affix to surface (in-jamb mount shown).

CHECK

Singles: Receiver & housing are **plumb & straight** both directions.

Doubles: Straight joiners/corner joiners are vertically aligned **plumb** both ways. Housings are plumb & straight both directions.

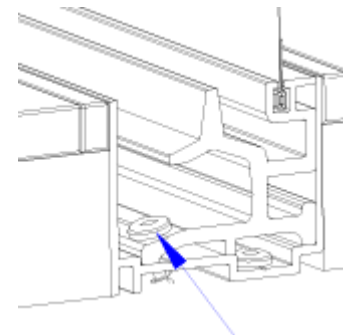
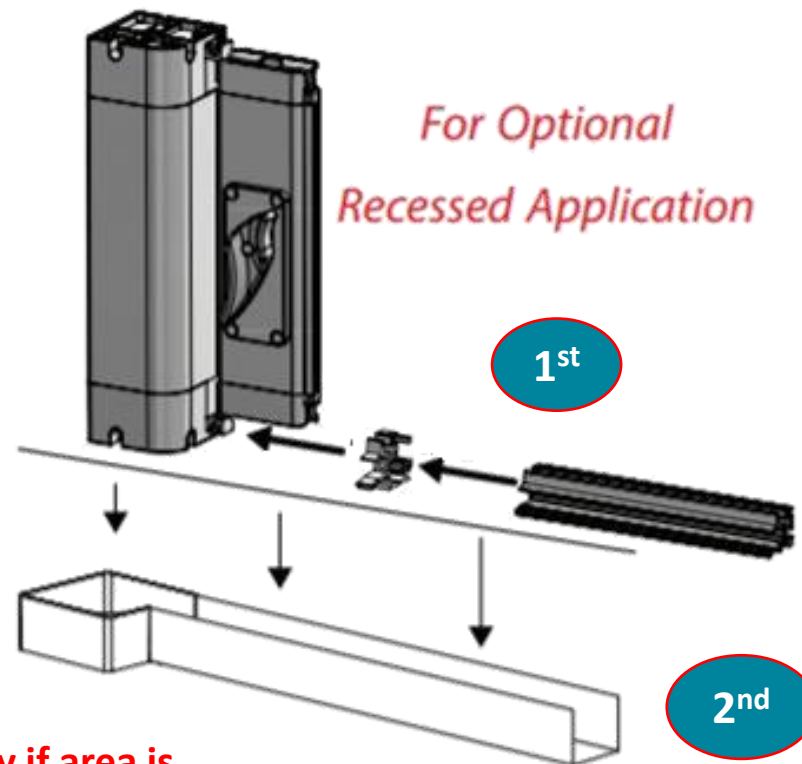
Tracks level, parallel, and free-of-twist.



1. Attach cup to recess channel.
2. Position channel level. Shim if necessary.
3. Prep & cut tracks.
4. Prep track entry, then mallet track-guide onto track
5. Fasten lower track-guide onto housing endcap lug.
6. Place into recessed channel.
7. Screw track into track channel.
8. Abide by standard steps otherwise where applicable.

****IMPORTANT NOTE: For exterior applications, especially if area is unprotected, note that recess channel and tracks are not weatherproof. Water Egress is the responsibility of the general contractor or builder.**

See [Recessed Installation Video](#)



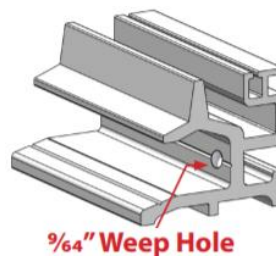
Concealed Applications

- If concealed on all four sides, it **must be removable and serviceable**. Review “VistaView™ Plus Concealed” drawings on technical page.

Removable trim work is the contractor’s responsibility. See [Recessed Installation Video](#)

Exposed Exterior Applications

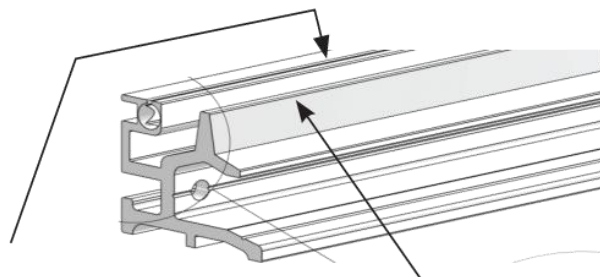
- **Water Egress is the contractor’s responsibility.**
- If *lower tracks* are mounted on top of threshold, and where exposed to weather, it is recommended that **weep holes be drilled through the tracks.**



- If exposed to weather, it is good practice to dab pilot holes with waterproof silicone before fastening tracks, housing, and receiver.

Educate the homeowner:

1. Twist the brake handle **fully** when operating the screen.
2. Keep tracks clean with brush, cloth, or vacuum. Mesh may be vacuumed with upholstery brush.



Spray Silicone into the opening that the mesh slides in along the entire track.

Do not spray silicone where the brake is applied.

3. Use **only dry silicone**. Frequency dependent upon season and location. Clean tracks first.
4. Do **not** use corrosive cleaners.
5. Retract when not in use.

