



VistaView™ Plus LP – Installation Guide

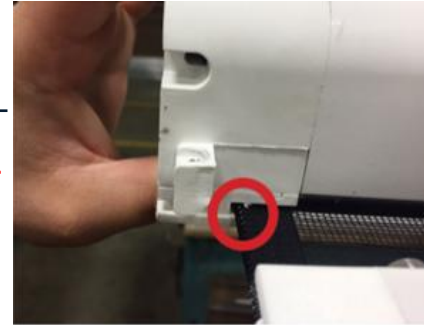
Product tech. support:

support@wizardscreens.com 1-888-949-3667

First things

- **READ INSTRUCTIONS BEFORE PROCEEDING.**
- **Glazed door must be installed before screen installation.*
- If concealed, screen unit must be **removable & serviceable.**
**This application is outside of Wizard support.*

Figure 1



Unpackaging

- Inspect at shop.
- Transit to site *protected.*
- **Report damage to sales rep. with pictures immediately.**

Figure 2



Preparation

- **Figure 1** Zippers in slots.
- **Figure 2** Leave pull-bar support tracks **ON** *until* exchanging with tracks.
 1. Exchange with **lower** track. Affix track. **Not applicable to LP track;* then
 2. Exchange with **upper** track. Affix track.
- **Figure 3** Leave handle opener **ON** handle *until* installation complete.
- **Do NOT draw/retract screen on bench!**

Figure 3

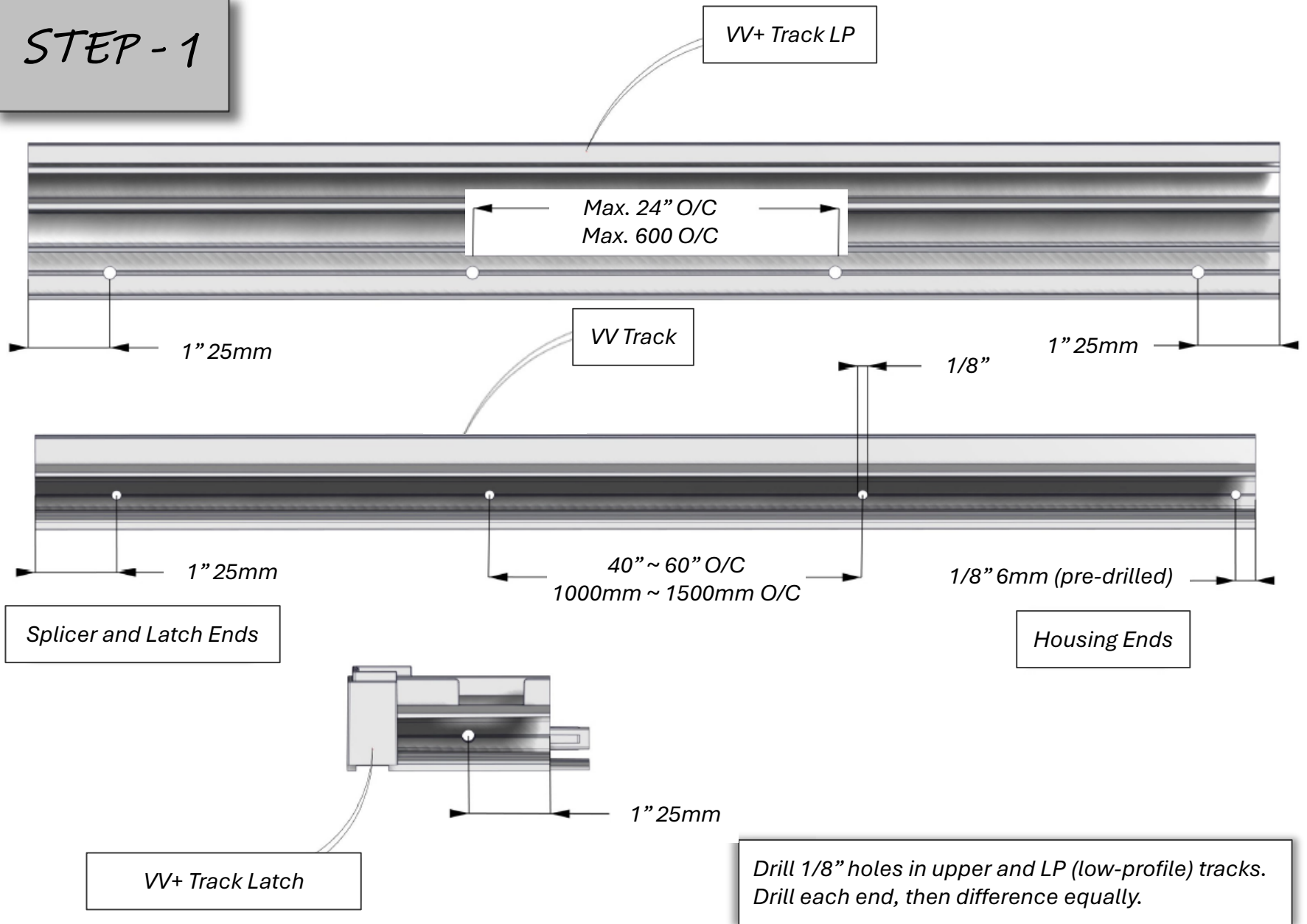


Abb.	Word	Notes
VV	VistaView™	Some VV parts are also used with VistaView™ Plus.
VV+	VistaView™ Plus	VistaView™ Plus parts.
VV Track	VistaView™ Standard Track	Applicable on top and bottom.
VV+ LP Track	VistaView™ Plus Low-Profile Track	Alternative bottom track option. Suitable where low-threshold required.

Considerations

- Track screws available in **white** and **black** colours.
- For **VV+ Standard** (as opposed to VV+ Low-Profile shown in this guide), lower track steps identical to upper track steps.
- **VV+ Standard Track** can be recessed into floor using **recess cup & channel**. See [technical specifications](#)

STEP - 1



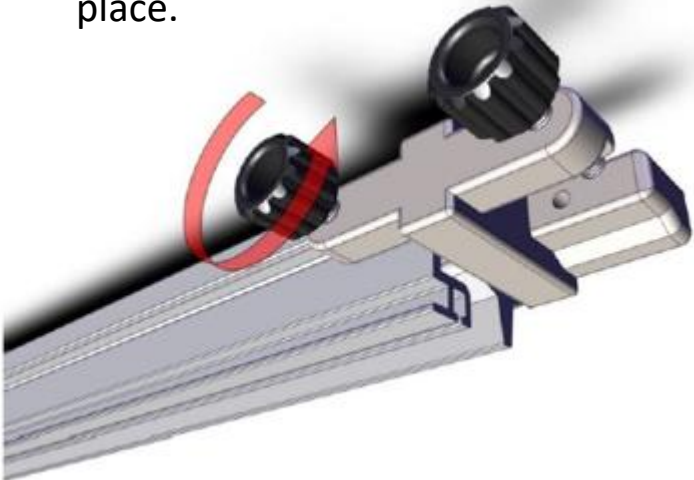
STEP - 2A

NEW
April 23
2026

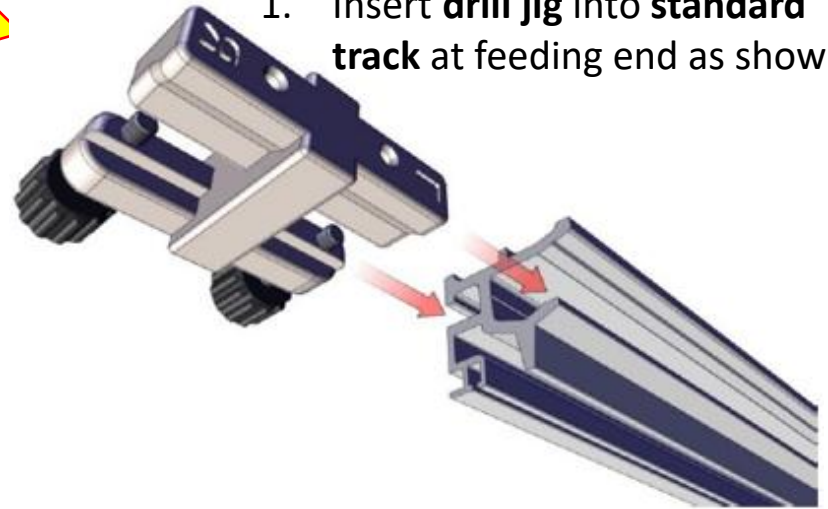


Requires 1/8" hole where lug will be positioned when attached.

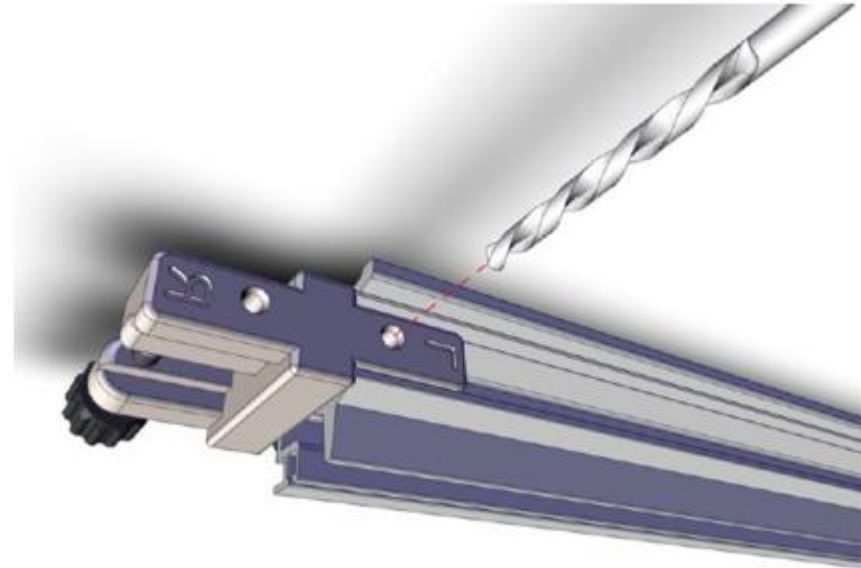
2. Ensure **drill jig** is butted to **standard track** end. Tighten knob to lock into place.



1. Insert **drill jig** into **standard track** at feeding end as shown.

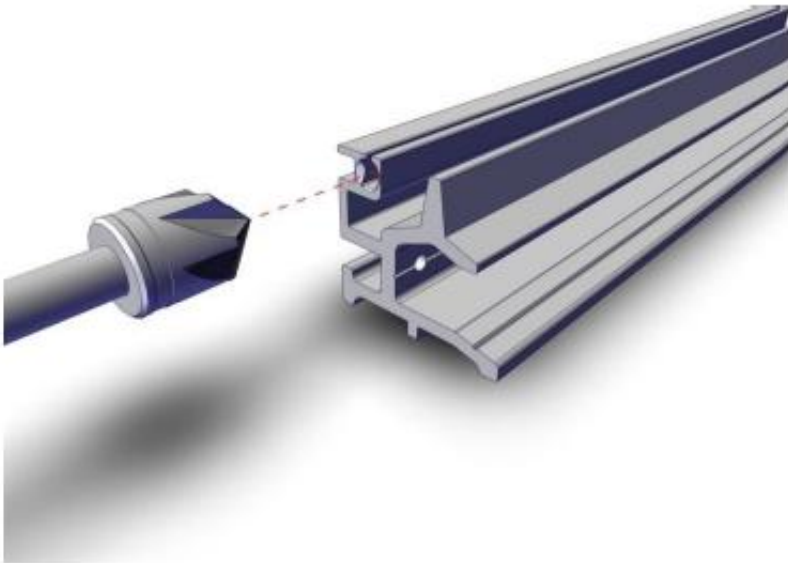


3. Drill through **standard track** with 1/8" bit.

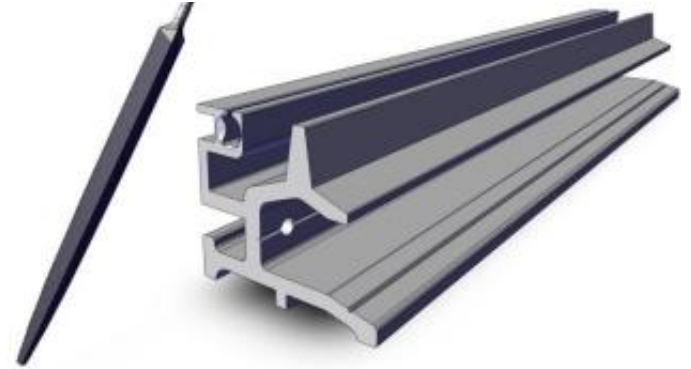


STEP - 2B

Counter-sink feeding end of **track slot**.

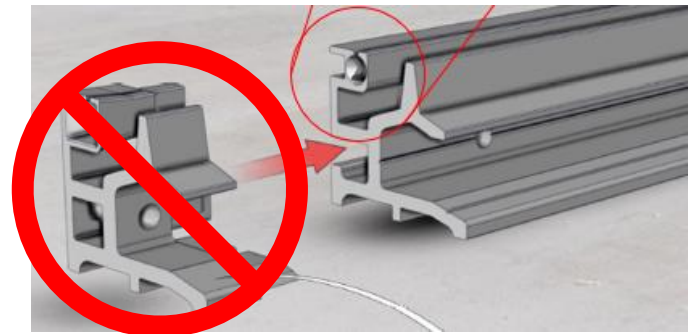


Use needle file to debur sharp corners on **track slot**.

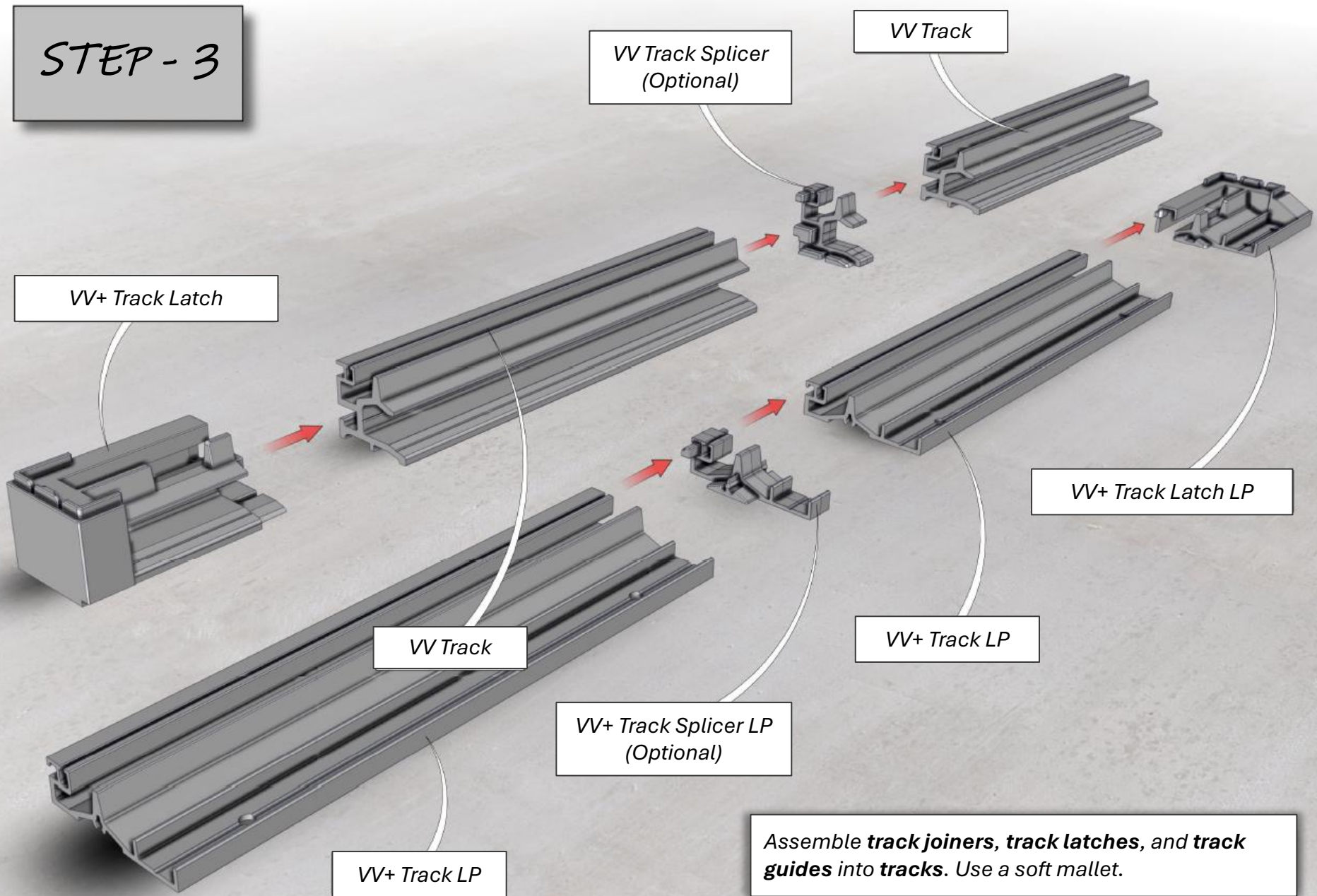


***Complete for both “Standard Track ”
and “Low-Profile Track” (not shown)**

**VistaView™ Plus with metal endcaps do *not*
require track guides.
Housing endcaps include built-in guides.**



STEP - 3



Assemble **track joiners, track latches, and track guides** into tracks. Use a soft mallet.

VistaView™ Plus 100 LP In-Jamb Application

upper housing endcap preparation for oversized housing screw

Pre-drill



Pre-drill __ again



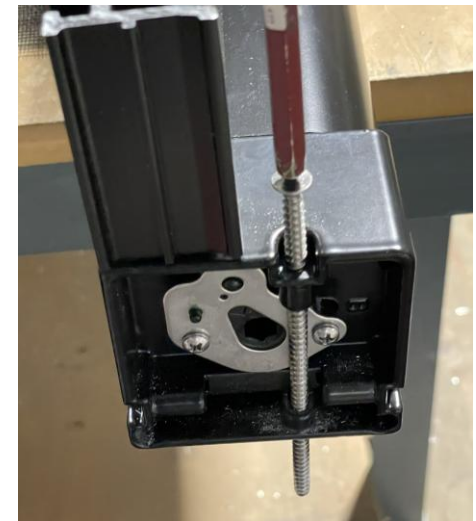
Counter-sink...



...until it looks like this



Pre-thread by passing screw in and out.



STEP - 4B

VV+ Housing Mount LP

#6 Flat Head Screw

- 1) Install 2 **housing mounts LP**, being careful not to over-torque.
- 2) Lower **housing** over buttons, ensuring it sits fully on floor.

STEP - 5

Affix **Housing**

Alternative Screw Location



*Plumb **housing**, then affix with screw to secure as shown, using shim if necessary.*

Do not fully tighten at this stage.

STEP - 6

DO NOT remove handle lock!

VV+ Track LP

VV+ Track Splicer LP
(Optional)

Ensure **handle-lock** remains on **pull-bar** until **top and bottom tracks** are installed.
Align **lower track** and feed along pull-bar as shown in next step.

STEP - 7

VV+ Assembled Pull-bar

Track Slot

Zipper

Endcap Lug

Feed **lower track** along **pull-bar**, carefully feeding **zipper** into **track slot** without damaging.

Continue to feed **track** onto **endcap lug** and against **housing**.
*Doorframe not shown for clarity.

STEP - 8

DO NOT remove **handle-lock!**

VV+ Track Latch LP

VV+ Track LP

Attach remaining segments of track. Final piece can be tilted into place if space is limited.

STEP - 9

DO NOT remove handle lock!

VV+ LP Track Cover Clip

If drill torque is too strong, track cover clip will flex inwards, and hooks will not grab covers. Drive home screws with light torque, then back off slightly.

VV+ LP Track Cover Clip

Ensure **track** is fully against **housing**, with no gaps at joints. Level **track**, placing shims under each screw location, if necessary. Secure **LP track cover clips** **max. 24" O/C** with #6 screws into floor.

STEP - 10

Housing Lug

VV+ Track Splicer
(Optional)

VV Track

DO NOT remove handle lock!

Feed **lower track** along **pull-bar**, carefully feeding **zipper** into **track slot** without damaging.

Continue to feed **track** onto **endcap lug** and against **housing**.

Fully tighten housing screw

1/8" [3mm] gap

STEP - 11

VV+ Handle Lock

Handle rotates to brake position

Move **pull-bar** out to support end of **upper track** segment, then remove **handle-lock** to activate brakes and maintain position.

STEP - 12

VV+ Track Latch

VV Receiver

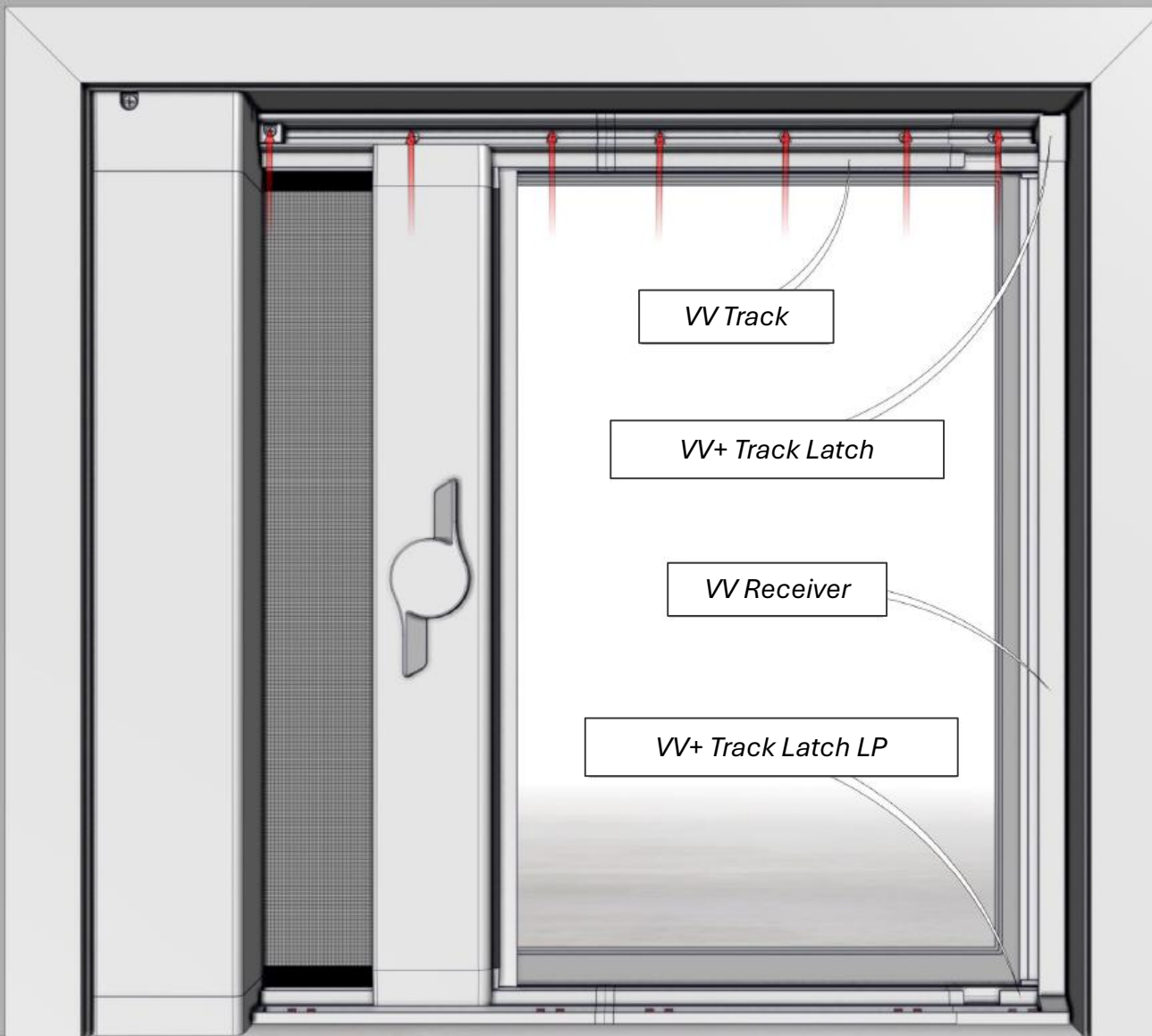
Before fastening final **track** segment, **receiver** must fit between top and bottom latches.

STEP - 13

VV Receiver

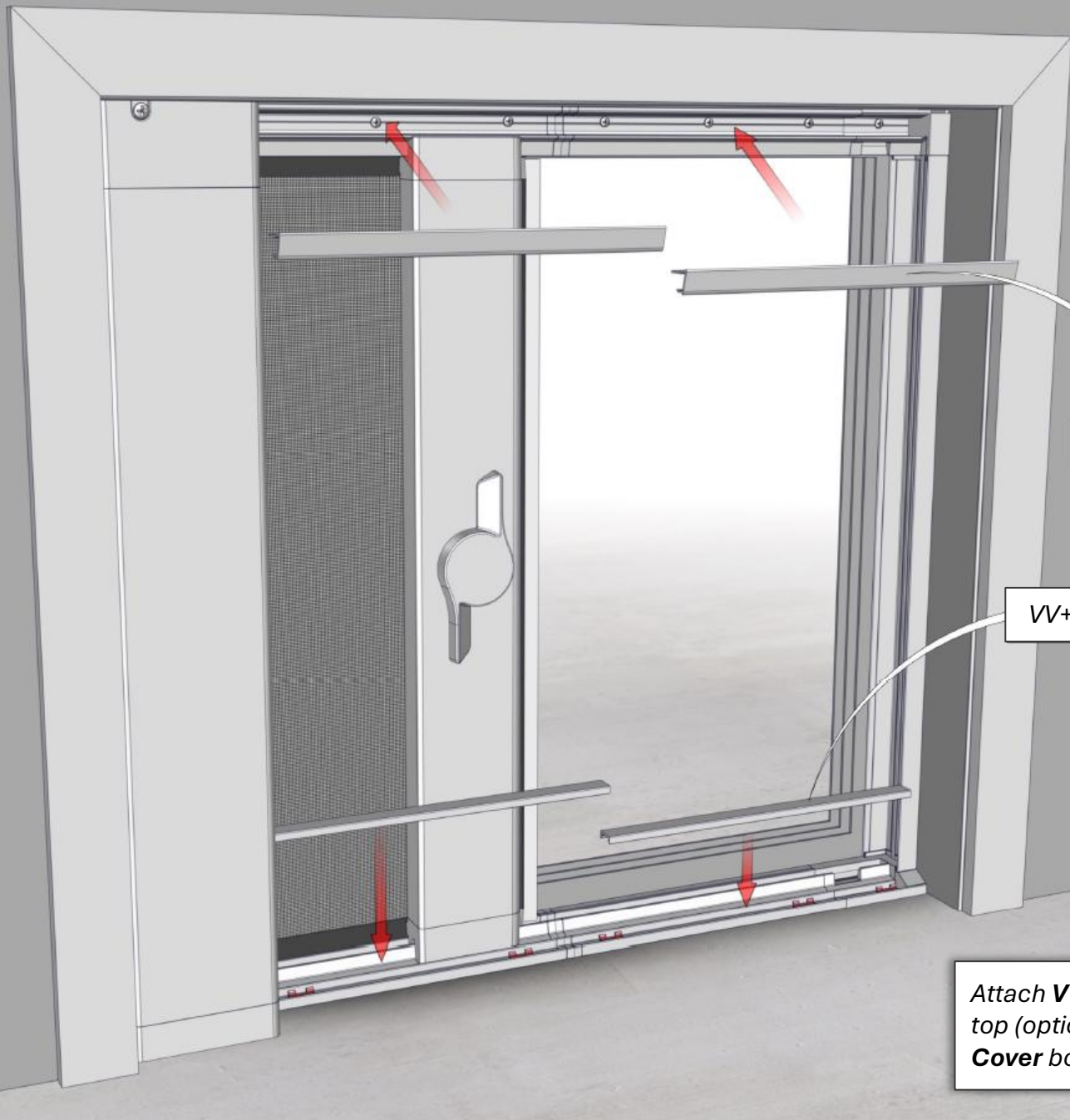
Fit receiver between top and bottom track latches. The upper track can be fitted onto latch alignment tabs, or receiver can be flexed into position (if no room).

STEP - 14



Ensure **track, latch, and receiver** connections do NOT have gaps, then install remaining screws in **upper track and receiver**.

STEP - 15



VV Standard Track Cover (Optional)

VV+ LP Track Cover

Attach *VV Standard Track Cover* top (optional) and *VV+ LP Track Cover* bottom.

Spray **Wizard Dry Silicone** along track zipper feeds.

Hand-off **Wizard Maintenance Kit** to customer.





Wizard
Screens & Shades